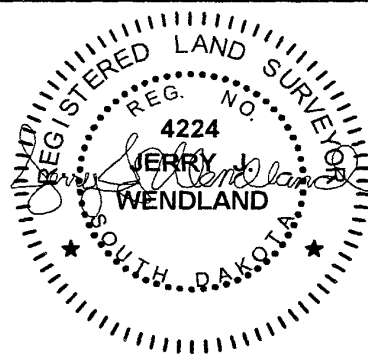


04RZ003

S 89°52'4" E

90.79'

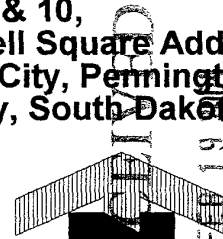


JERRY J. WENDLAND
LAND SURVEYING
6909 Ridgeview Dr.
Black Hawk, SD
57718-9555

Tels: 605-787-4503 / Fax: 605-787-9454
ANGLE SURVEYS



Legal Description:
Lots 9 & 10,
Cambell Square Add.
Rapid City, Pennington
County, South Dakota



1" = 60'

Rapid City Growth
Management Department

N 0°06'29" E - 371.35'

Lot 9

10' wide utility & drainage easements

S 28°57'25" E - 259.12'

S 89°48'22" E - 200.14'

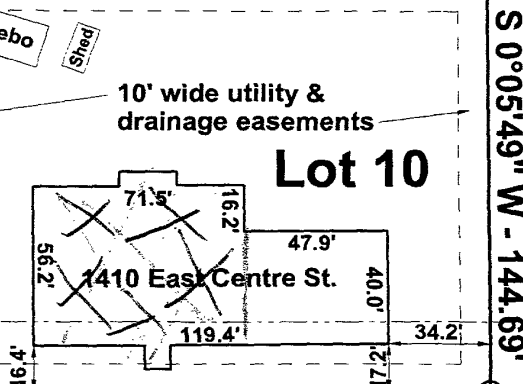
S 0°03'21" W - 144.91'



10' wide utility & drainage easements

Lot 10

25' Front Building Setback Line



S 0°05'49" W - 144.69'

N 89°52'10" W - 216.80'

N 89°52'4" W - 200.03'

Centre Street

Long Range Comprehensive Plan 2000 Show,