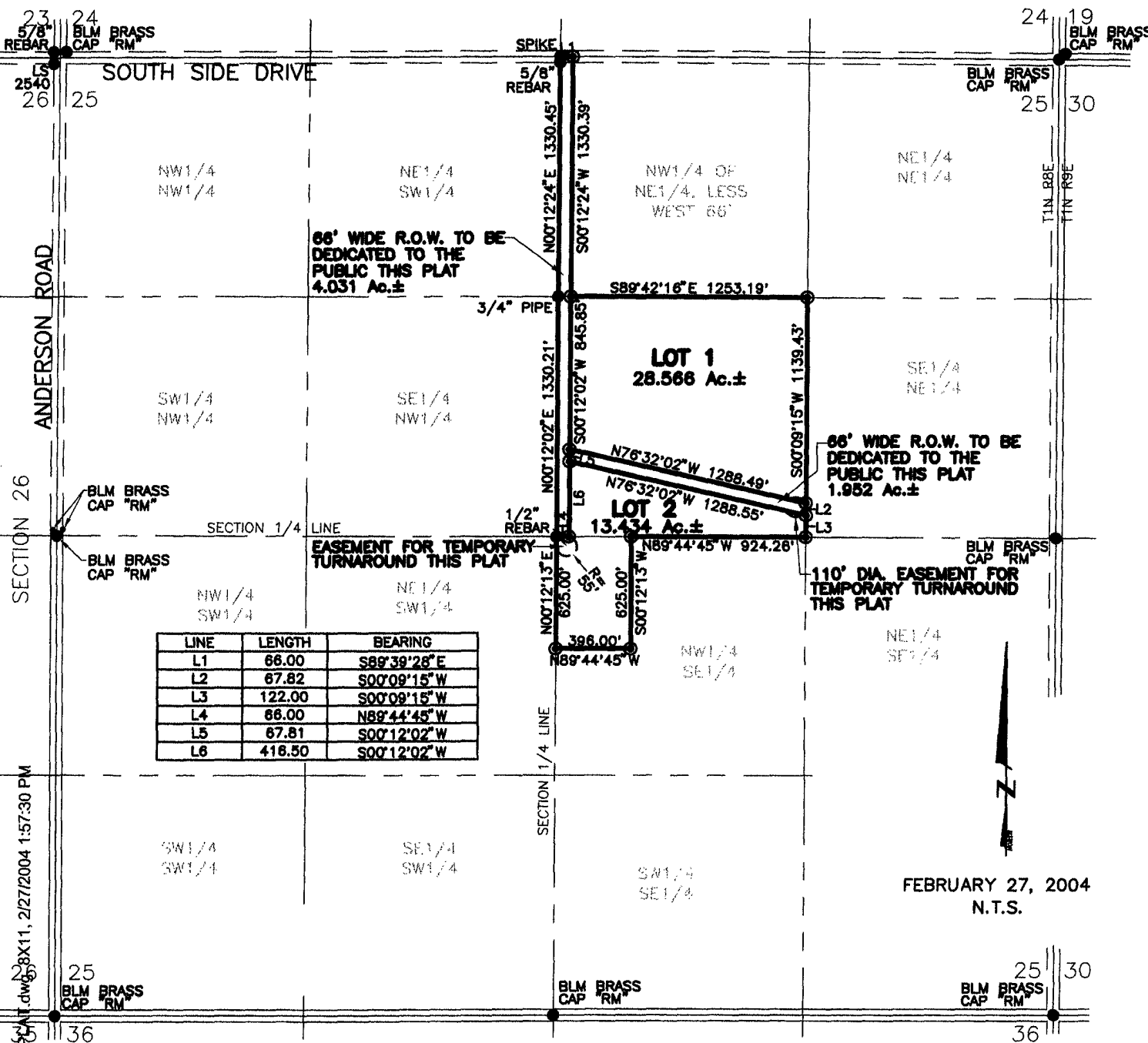


# PLAT OF LOT 1 AND 2, STEEN SUBDIVISION

(formerly the West 66' of the NW<sup>1</sup>/<sub>4</sub> of the NE<sup>1</sup>/<sub>4</sub>, the SW<sup>1</sup>/<sub>4</sub> of the NE<sup>1</sup>/<sub>4</sub>,  
and a portion of the NW<sup>1</sup>/<sub>4</sub> of the SE<sup>1</sup>/<sub>4</sub> of Section 25 )

LOCATED IN THE E<sup>1</sup>/<sub>2</sub>,  
SECTION 25, T1N, R8E, BHM,  
PENNINGTON COUNTY, SOUTH DAKOTA



66' WIDE R.O.W. TO BE DEDICATED TO THE PUBLIC THIS PLAT  
4.031 Ac.±

66' WIDE R.O.W. TO BE DEDICATED TO THE PUBLIC THIS PLAT  
1.952 Ac.±

EASEMENT FOR TEMPORARY TURNAROUND THIS PLAT

110' DIA. EASEMENT FOR TEMPORARY TURNAROUND THIS PLAT

LINE	LENGTH	BEARING
L1	66.00	S89°39'28" E
L2	67.82	S00°09'15" W
L3	122.00	S00°09'15" W
L4	66.00	N89°44'45" W
L5	67.81	S00°12'02" W
L6	418.50	S00°12'02" W



FEBRUARY 27, 2004  
N.T.S.

8711871PC.dwg 8X11, 2/27/2004 1:57:30 PM