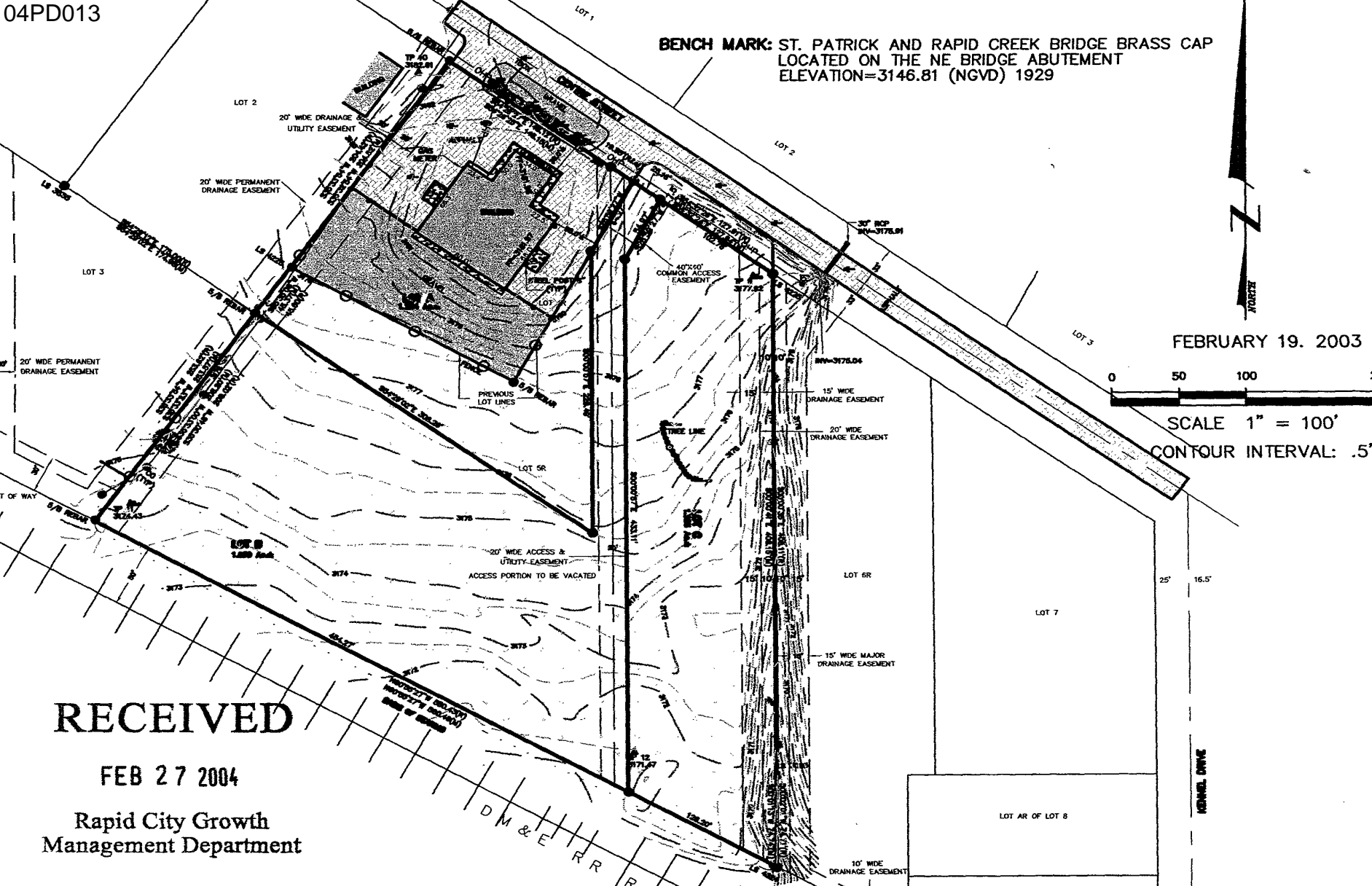


**BENCH MARK: ST. PATRICK AND RAPID CREEK BRIDGE BRASS CAP
LOCATED ON THE NE BRIDGE ABUTMENT
ELEVATION=3146.81 (NGVD) 1929**



RECEIVED

FEB 27 2004

Rapid City Growth
Management Department

PREPARED FOR:
DANNY PEDERSON
DEPENDABLE MOBILE HOME TRANSPORT
1875 E. CENTRE STREET
RAPID CITY, SD 57703

LOCATION:
LOTS 4R AND 5R
SALE BARN SUBDIVISION
LOCATED IN SE1/4, NW1/4,
SECTION 5, T26, R16E, S44M.
RAPID CITY, PENNINGTON COUNTY, SOUTH DAKOTA



Renner Associates, LLC.
410 South 26 • Rapid City, SD 57701 • 605/725-7300
FAX: 605/725-7345 • E-MAIL: Gary@rennerassociates.com
Specialist Office: 605/717-0000

REVISIONS	
DATE	REVISION

DETAILED TOPOGRAPHIC MAP
PROPOSED LOTS A, B, C
OF LOTS 4R & 5R, SALE BARN SUBDIVISION
RAPID CITY, PENNINGTON COUNTY, SOUTH DAKOTA