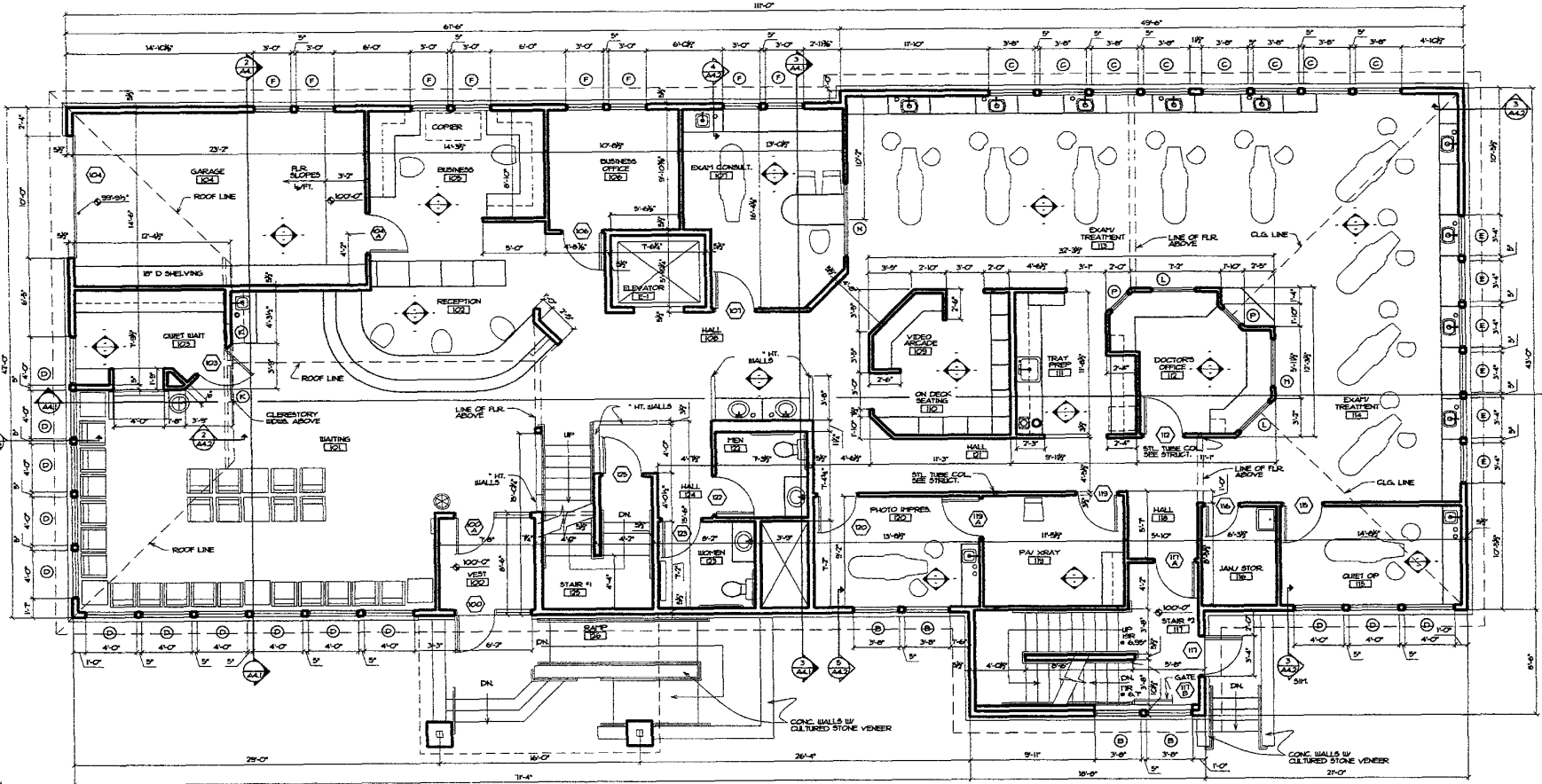

BASEMENT FLOOR PLAN
 SCALE: 1/4"=1'-0"
 SQUARE FOOTAGE INFORMATION
 GROSS OF 3,073 SF
 STAIRS OF 304 SF
 NET SF 2,769 SF

RECEIVED
 FEB 24 2008
 Rapid City City
 Management De

1421 SHERMAN AVE. RAO
 RAPID CITY, SOUTH DAKOTA 57702-3403
 605-342-9222
 LUND & ASSOCIATES
 ARCHITECTURE • INTERIOR • PLANNING
 LTD.

PROJECT NO. 04PD008
 DRAWN BY: J. LUND
 CHECKED BY: J. LUND
 DATE: 02/18/08
 SHEET NO. 04PD008-1
 OF THE 04PD008-1
 SHEET TITLE: BASEMENT FLOOR PLAN



MAIN FLOOR PLAN
 SCALE: 1/4" = 1'-0"

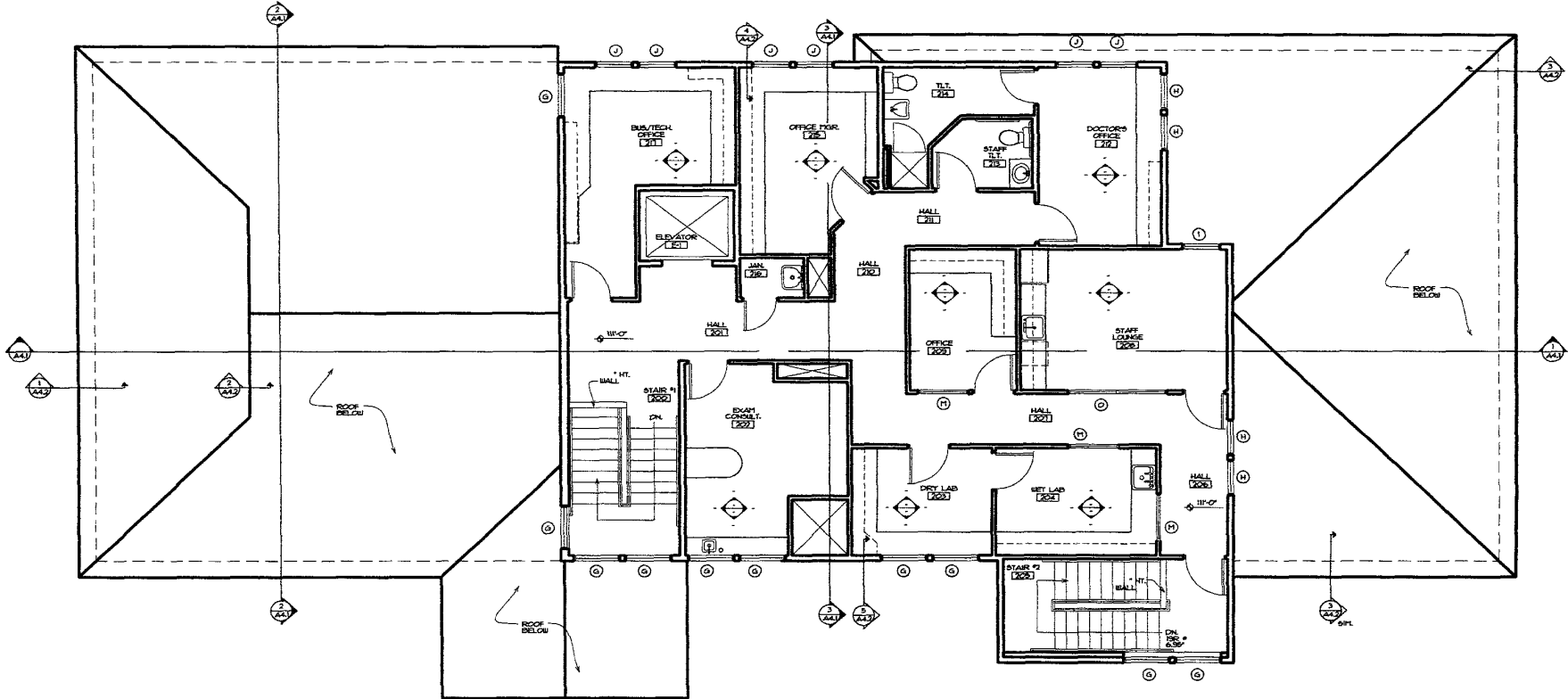
SQUARE FOOTAGE INFORMATION
 GROSS SF 4,284 SF
 STAIRS & DECK 166 SF
 GARAGE SF 372 SF
 NET SF 4,118 SF


EVANS ORTHODONTICS
 RAPID CITY, SOUTH DAKOTA

1801 INDIAN LANE ROAD
 RAPID CITY, SOUTH DAKOTA 57703-3433
 605-348-3888
 ARCHITECTURE • INTERIOR • PLANNING

LUNDGREN ASSOCIATES LTD.

RECEIVED
 FEB 24 2008
 Rapid City
 Management Dept




SECOND FLOOR PLAN
 SCALE: 1/8"=1'-0"
 SQUARE FOOTAGE INFORMATION
 GROSS SF 2346 SF
 STAIR #2 SF 143 SF
 NET SF 2203 SF

RECEIVED
 FEB 24 2008
 Rapid City G
 Management Dep

1551 HERMAN AVE. SUITE 200
 RAPID CITY, SOUTH DAKOTA 57709-3453
 605-342-3400
 FAX 605-342-3401
 ARCHITECTURE • INTERIOR • PLANNING

LUND ASSOCIATES LTD.

PROJECT: _____
 DATE: _____
 DRAWN BY: OSO001
 CHECKED BY: _____
 DATE: _____
 SCALE: 1/8"=1'-0"
 SHEET NO. _____
 TOTAL SHEETS: _____
 PROJECT: _____
 DATE: _____
 DRAWN BY: _____
 CHECKED BY: _____
 DATE: _____
 SCALE: 1/8"=1'-0"
 SHEET NO. _____
 TOTAL SHEETS: _____

EVANS ORTHODONTICS
 RAPID CITY, SOUTH DAKOTA
 SECOND FLOOR PLAN