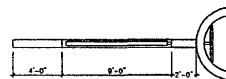


Architectural elevation drawing of the exterior of the building. The drawing shows a complex roofline with a prominent chimney on the left side. The roof is labeled 'STANDING SEAM METAL ROOF'. The main body of the building has a gabled roof, which is labeled 'NORMAL SHINGLE'. The drawing is a black and white line drawing, showing the structural details of the roof and chimney.

Architectural drawing of the rear elevation of the building. It features a chimney with a cross-shaped vent on top, a gabled roof, and a brick chimney. Labels include "BRICK" and "UPPERS SINGLE".

Architectural elevation drawing of the building. The drawing shows a dark, textured facade with a prominent vertical metal panel and a curved roofline. Labels include "METAL PANELS", "STANDING SEAM METAL ROOF", and "BRICK".

RECEIVED
FEB 16 2004
Rapid City
Planning Department



Technical drawing of a church sign with dimensions and material callouts:

- Dimensions:**
 - Overall width: 18'-6"
 - Overall height: 12'-6"
 - Sign panel width: 12'-6"
 - Sign panel height: 12'-6"
 - Panel offset from left: 1'-6"
 - Panel offset from right: 1'-6"
 - Panel offset from bottom: 1'-6"
 - Panel offset from top: 1'-6"
- Text on Sign:** Calvary Lutheran Church
- Material Callouts:**
 - SELF ILLUMINATED SIGN - BLACK BACKGROUND W/ WHITE LETTERING
 - STEEL SUPPORTS, TYP
 - PROGRAMMABLE LED DISPLAY
 - ROWLOCK
 - FACE BRICK

Technical drawing of a vertical assembly. It shows a cross-section of a structure with a vertical rod passing through it. The rod has a circular head at the top. Dimensions are indicated on the right side: a vertical dimension of 15'-0" from the top of the structure to the center of the rod, and a horizontal dimension of 1'-5'-6" from the center of the rod to the right edge of the structure. A label 'PAINTED METAL CROSS' points to the circular head of the rod.

SIGNAGE
SCALE: 1/8" = 1'-0"