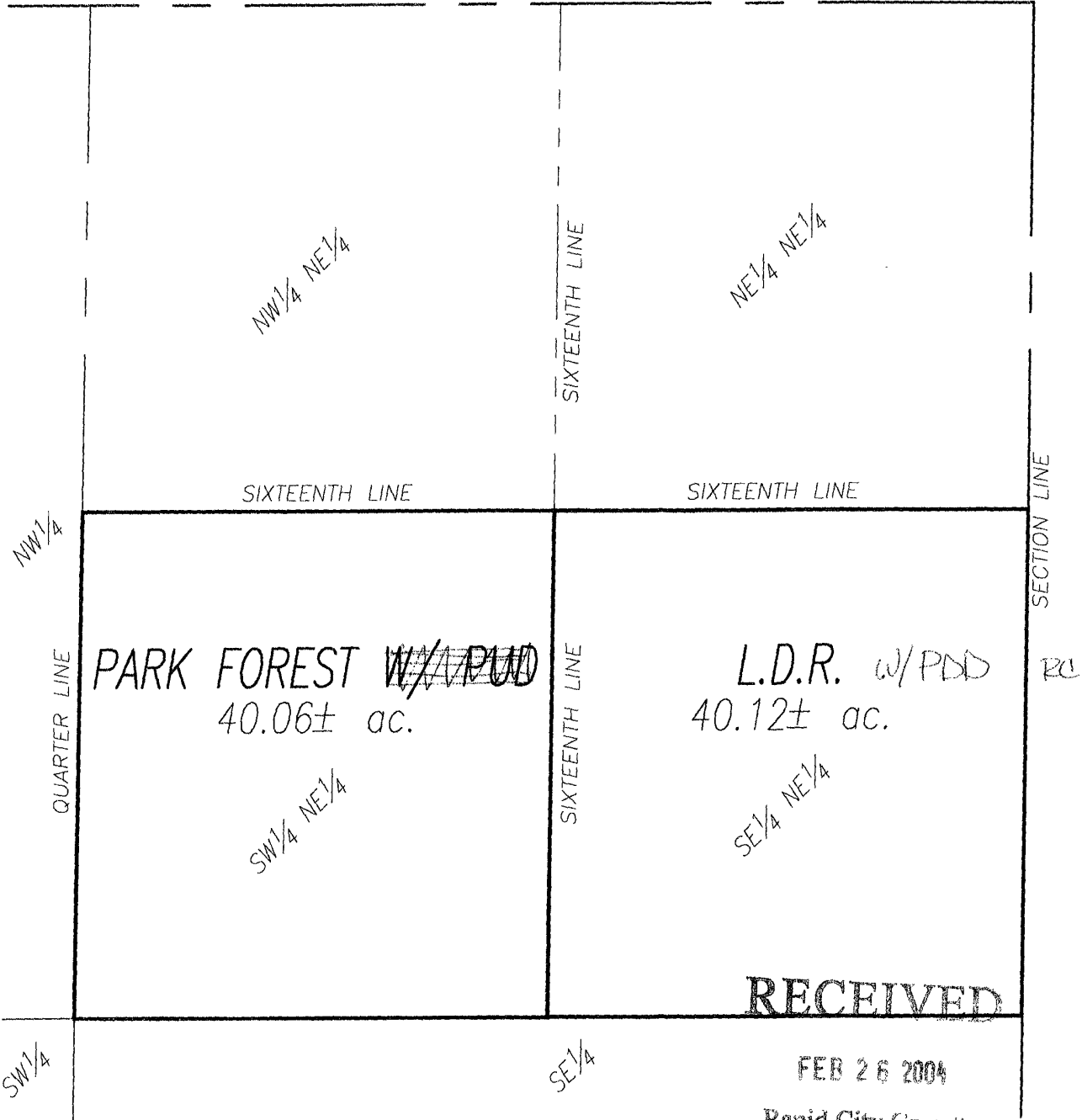


RAINBOW RIDGE SUB.

04AN001

PROPOSED LAND USE

LOCATED IN THE S $\frac{1}{2}$ NE $\frac{1}{4}$
SECTION 23 T2N, R7E, BHM
RAPID CITY, PENNINGTON COUNTY, S. DAK.

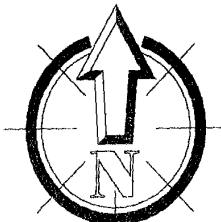


FILED FOR RECORD IN PENNINGTON COUNTY, S. DAK. FEB 26 2004 3:37:25 PM. BY [unclear]

RECEIVED

FEB 26 2004

Rapid City Growth
Management Department



SCALE: 1 INCH = 400 FEET