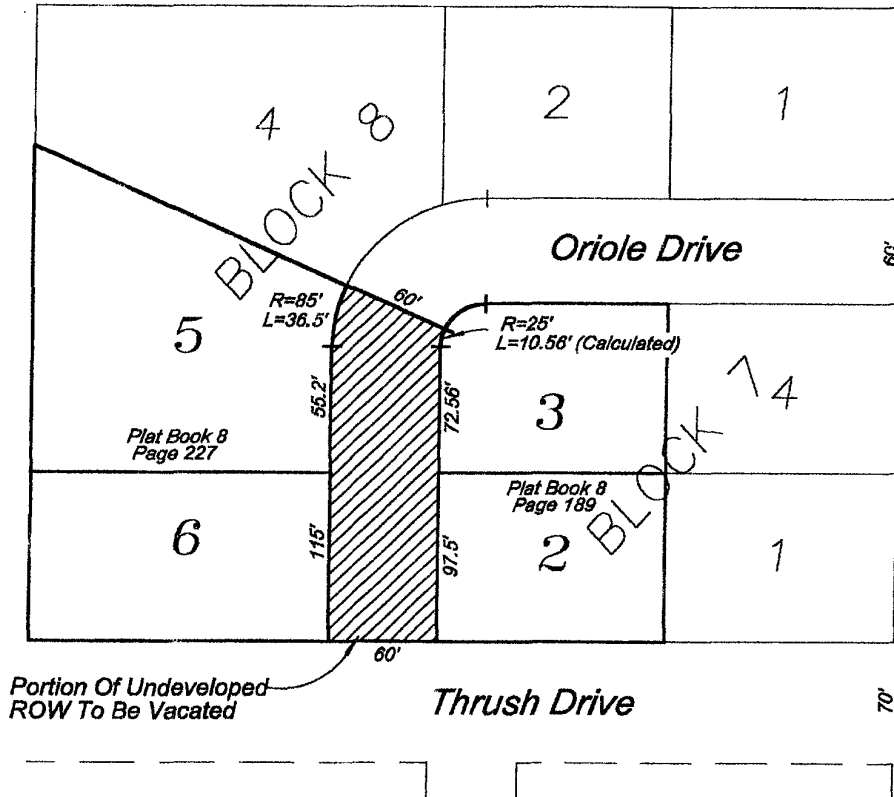
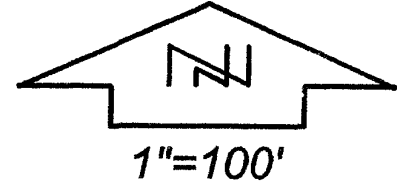


# EXHIBIT A

VACATION OF A PORTION OF UNDEVELOPED ORIOLE DRIVE RIGHT-OF-WAY ADJOINING LOTS 2 AND 3 IN BLOCK 7 AND LOTS 5 AND 6 IN BLOCK 8 OF LOT A OF MORNINGSIDE ADDITION ADDENDUM, RAPID CITY, PENNINGTON COUNTY, SOUTH DAKOTA



Dimensions Shown Are Of Record,  
Or As Otherwise Indicated

## RECEIVED

NOV 18 2003

Rapid City  
Planning Department



PREPARED BY:  
FISK LAND SURVEYING & CONSULTING ENGINEERS, INC.  
P.O. BOX 8154, RAPID CITY, SD 57709 (605) 348-1538 OCT. 20, 2003

NO. 03-10-05