

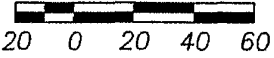
# PRELIMINARY PLAT OF

LOT 6 OF BLOCK 2 OF WINTON SUBDIVISION,  
AND DEDICATED MISCANTHUS STREET RIGHT-OF-WAY;  
LOCATED IN THE SE1/4 NE1/4 OF SECTION 26,  
TOWNSHIP 1 NORTH, RANGE 8 EAST OF THE BLACK HILLS MERIDIAN,  
PENNINGTON COUNTY, SOUTH DAKOTA.

JANUARY, 2004

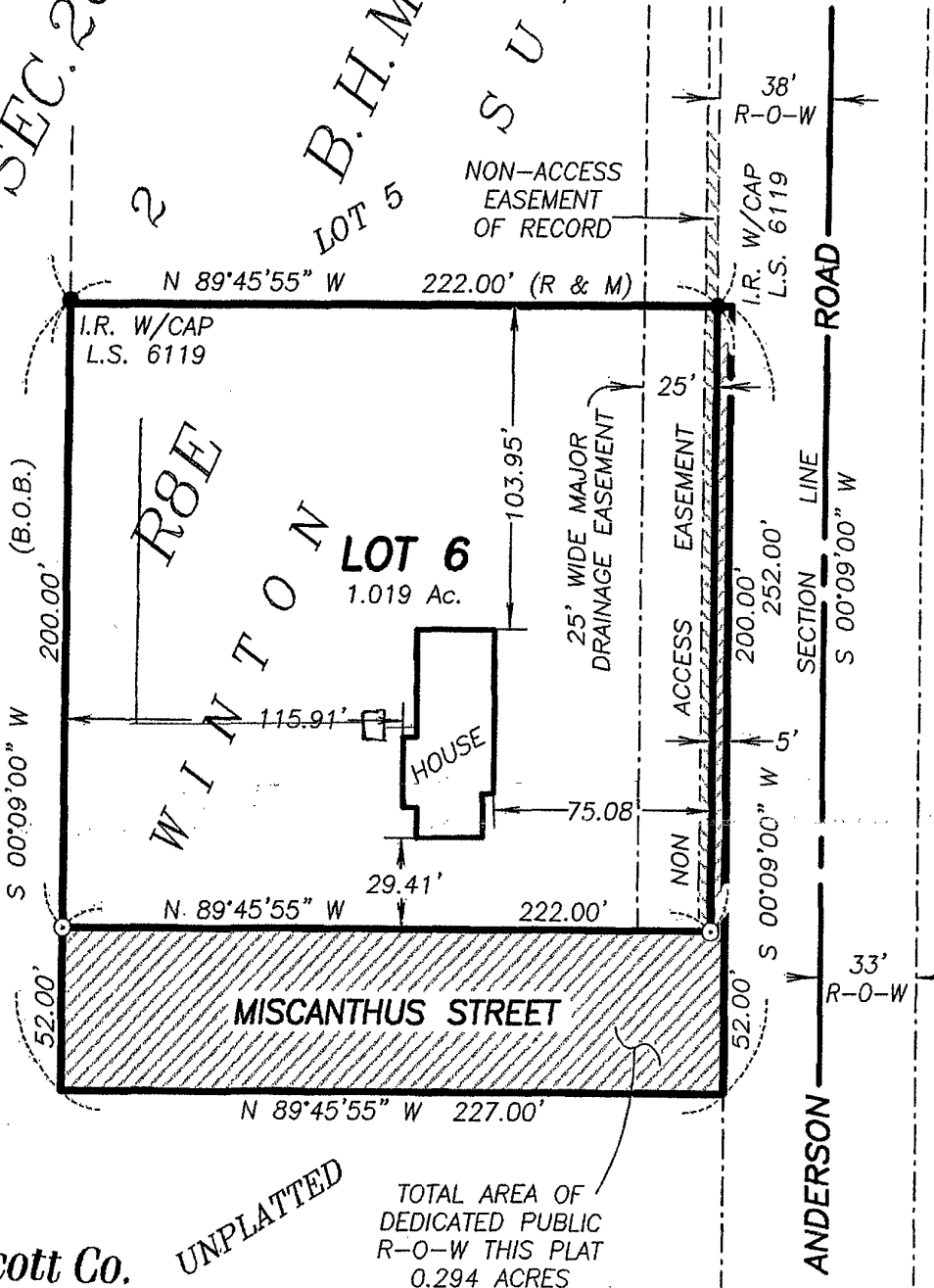
**N**

SCALE: 1" = 60'



SE1/4 NE1/4 SEC. 26  
BLOCK 2  
WINTON

B.H.M.  
LOT 5  
SUBD.



PREPARED BY:



**D.C. Scott Co.**  
LAND SURVEYORS  
3153 ANDERSON ROAD  
RAPID CITY, SD 57703  
(605) 393-2400

UNPLATTED

TOTAL AREA OF  
DEDICATED PUBLIC  
R-O-W THIS PLAT  
0.294 ACRES