

PLAT OF RED ROCK ESTATES

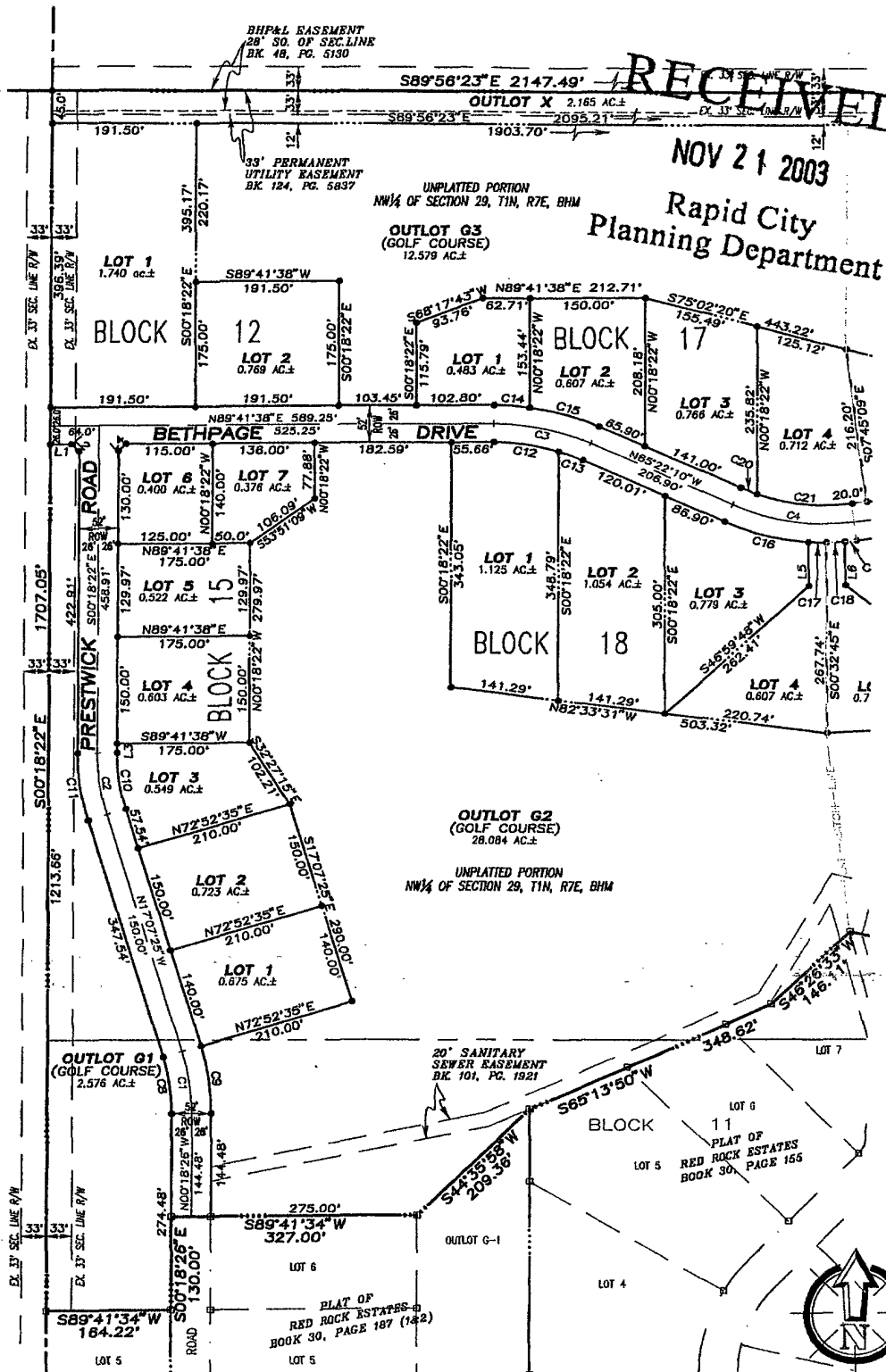
INCLUDING LOTS 1 THRU 2, BLOCK 12; LOTS 1 THRU 4, BLOCK 15;
LOTS 1 THRU 10, BLOCK 17; LOTS 1 THRU 17, BLOCK 18;
OUTLOTS G-1, G-2, G-3 & X AND DEDICATED STREETS

LOCATED IN THE UNPLATTED PORTION OF THE
NW¼ OF SECTION 29, T1N, R7E, BHM
RAPID CITY, PENNINGTON COUNTY, SOUTH DAKOTA

RECEIVED

NOV 21 2003

Rapid City
Planning Department



PREPARED FOR:
DREAM DESIGN INTERNATIONAL, INC.
528 KANSAS CITY ST., SUITE 4
RAPID CITY, SD 57701
(605) 348-0538

PREPARED BY:
ARLETH & ASSOCIATES
382 MAIN STREET
DEADWOOD, SD 57732
605-578-1637

JOB NO.
03-0003

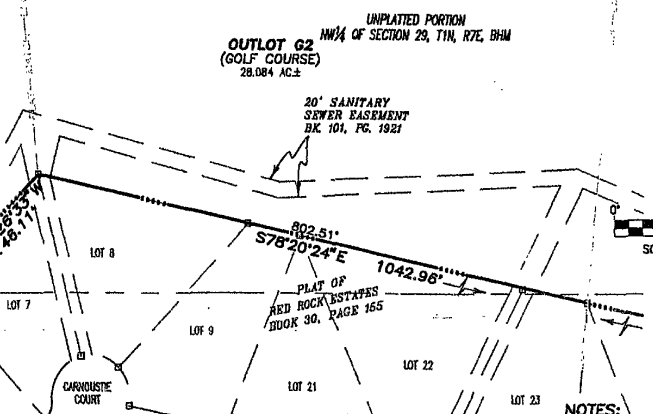
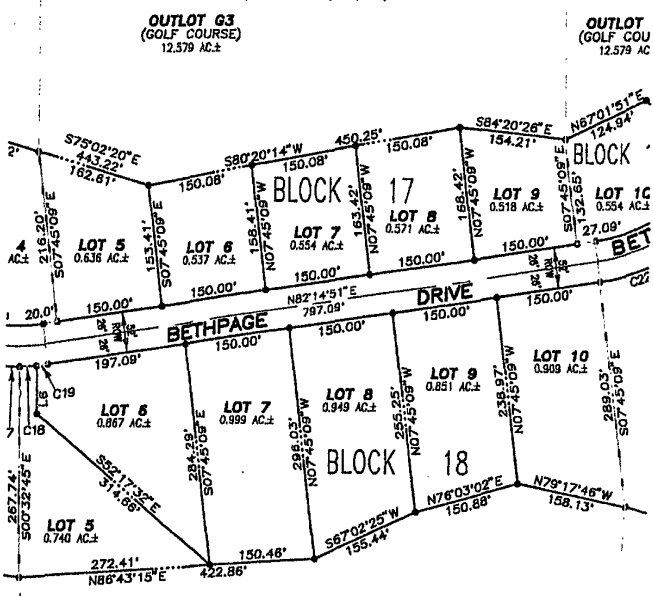
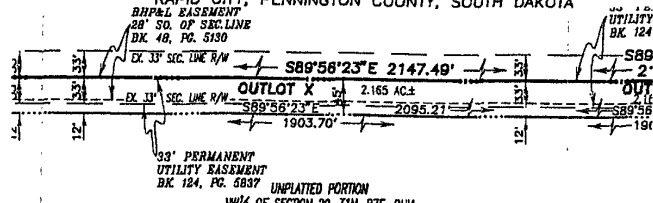
DATE: 10/31/03, 11/18
SCALE: 1" = 100'
DRAWN: WRD

APPROVED: _____
DWG: RR-IV_PLAT.DWG

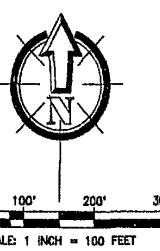
RED ROCK ESTATES

INCLUDING LOTS 1 THRU 2, BLOCK 12; LOTS 1 THRU 10, BLOCK 15;
LOTS 1 THRU 10, BLOCK 17; LOTS 1 THRU 17, BLOCK 18;
OUTLOTS G-1, G-2, G-3 & X AND DEDICATED STREETS

LOCATED IN THE UNPLATTED PORTION OF THE
NW 1/4 OF SECTION 29, T1N, R7E, BHM
RAPID CITY, PENNINGTON COUNTY, SOUTH DAKOTA



RECEIVED
NOV 2
Rapid
Planning D



CURVE TABLE

NUMBER	RADIUS	DELTA ANGLE	ARC LENGTH	TANGENT	CHORD BEARING	CHORD LENGTH
C1	300.00	16°48'58"	88.05	44.34	S08°42'58"E	87.73
C2	300.00	16°49'03"	88.08	44.35	S08°42'58"E	87.74
C3	300.00	24°56'17"	130.27	66.33	N7°50'15"W	129.54
C4	300.00	32°22'59"	169.56	87.11	S81°33'40"E	162.31
C5	300.00	08°11'14"	43.03	26.165	S44°09'14"W	39.37
C6	300.00	49°22'47"	258.55	137.02	N37°33'27"E	250.68
C7	300.00	32°48'27"	171.78	88.32	N16°23'50"E	169.44
C8	300.00	16°48'58"	88.05	44.34	S08°42'58"E	87.73
C9	326.00	16°48'58"	95.68	48.19	S08°42'58"E	95.34
C10	274.00	16°49'03"	80.42	40.50	S08°42'53"E	80.14
C11	300.00	16°49'03"	88.08	44.35	N08°42'53"W	87.74
C12	274.00	17°55'40"	65.73	43.22	S81°20'32"E	65.38
C13	274.00	07°00'32"	33.52	16.78	S68°52'26"E	33.50
C14	326.00	08°19'31"	47.37	23.73	N86°08'38"W	47.33
C15	326.00	16°36'40"	94.51	47.59	S73°40'30"E	94.11
C16	326.00	20°46'42"	118.22	59.77	S75°45'31"E	117.58
C17	326.00	04°23'53"	25.02	12.52	S88°20'49"E	25.02
C18	326.00	04°23'53"	25.02	12.52	S87°15'18"W	25.02
C19	326.00	02°48'30"	15.98	7.99	S83°39'06"W	15.98
C20	274.00	05°00'38"	23.98	11.99	S67°52'29"E	23.95
C21	274.00	27°22'21"	130.90	66.72	S84°03'59"E	128.66
C22	326.00	19°31'10"	111.08	56.07	S72°29'16"W	110.52
C23	326.00	23°31'47"	133.87	67.89	N05°05'50"E	132.93
C24	55.00	79°28'05"	78.26	45.70	N48°03'50"W	78.30
C25	55.00	40°51'07"	39.22	20.49	S71°47'04"W	38.40
C26	55.00	51°33'09"	78.29	42.74	S10°34'26"W	71.85
C27	55.00	75°42'58"	72.68	42.75	N88°03'52"W	67.51
C28	30.00	48°47'23"	25.55	13.51	N81°31'28"W	24.78
C29	30.00	48°47'23"	25.55	13.51	N32°44'14"W	24.78
C30	326.00	26°28'32"	150.64	76.69	S15°17'53"W	148.30
C31	274.00	40°43'42"	194.77	101.70	S61°53'00"W	190.70
C32	274.00	41°27'31"	198.28	103.70	N20°47'23"E	193.97

SHORT COURSE TABLE

NUMBER	DIRECTION	DISTANCE
L1	S89°41'38"W	28.00'
L2	N45°18'22"W	14.74'
L3	N00°18'22"W	12.94'
L4	S44°13'38"W	14.14'
L5	S03°32'45"E	60.88'
L6	S03°32'45"E	60.88'
L7	N80°35'40"E	14.80'
L8	S57°07'56"E	18.49'
L9	N57°07'56"W	18.49'
L10	N45°13'32"W	14.80'

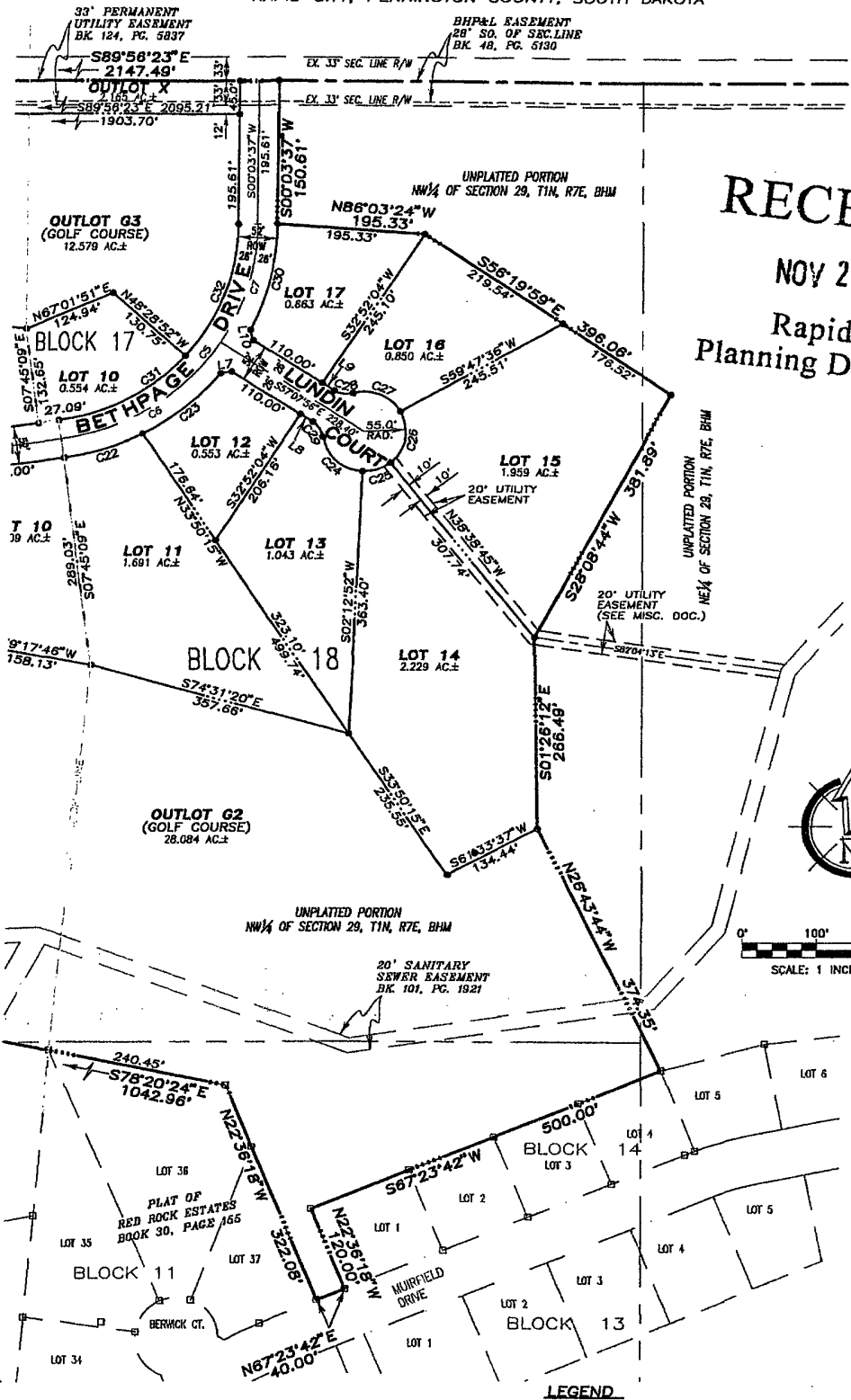
NOTES:

- MINOR DRAINAGE AND UTILITY EASEMENTS ARE HEREBY ESTABLISHED BY WIDE ON THE INTERIOR SIDE OF ALL LOT LINES AND EXTERIOR OF RIGHT-OF-WAY. (EXCEPT WHERE MAJOR DRAINAGE EASEMENTS ARE LOCATED)
- TOTAL PLATTED AREA: 80.293 ACRES
LOTS: 36 LOTS, 28.423 ACRES
PUBLIC RIGHT-OF-WAY: 4.725 ACRES
(DEDICATED FOR PUBLIC USE BY THIS PLAT.)
OUTLOT G-1, G-2 & G-3 (GOLF COURSE): 43.239 ACRES
- ANY MAJOR DRAINAGE EASEMENT SHOWN HEREON SHALL BE KEPT FREE OF ALL OBSTRUCTIONS INCLUDING BUT NOT LIMITED TO BUILDINGS, WALLS, FENCES, HEDGES, TREES, AND SHRUBS. THESE EASEMENTS GRANT TO ALL PUBLIC AUTHORITIES THE RIGHT TO CONSTRUCT, OPERATE, MAINTAIN, INSPECT AND REPAIR SUCH IMPROVEMENTS AND STRUCTURES AS IT DEEMS EXPEDIENT TO FACILITATE DRAINAGE FROM ANY SOURCE.
- NON-ACCESS EASEMENTS ARE HEREBY ESTABLISHED ALONG THE FIRST FIFTY FEET OF CORNER LOTS OR AS INDICATED HEREON.

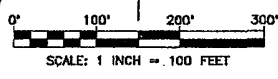
PLAT OF RED ROCK ESTATES

INCLUDING LOTS 1 THRU 2, BLOCK 12; LOTS 1 THRU 7, BLOCK 15;
LOTS 1 THRU 10, BLOCK 17; LOTS 1 THRU 17, BLOCK 18;
OUTLOTS G-1, G-2, G-3 & X AND DEDICATED STREETS

LOCATED IN THE UNPLATTED PORTION OF THE
NW 1/4 OF SECTION 29, T1N, R7E, BHM
RAPID CITY, PENNINGTON COUNTY, SOUTH DAKOTA



RECEIVED
 NOV 21 2003
 Rapid City
 Planning Department



LEGEND

- DENOTES SET 5/8" REBAR WITH SURVEY CAP MARKED "RLS 3977"
 - DENOTES FOUND SURVEY MONUMENT
- BASIS OF BEARING: PER PREVIOUSLY RECORDED PLAT(S).

PREPARED FOR:
 DREAM DESIGN INTERNATIONAL, INC.
 628 KANSAS CITY ST., SUITE 4
 RAPID CITY, SD 57701
 605) 348-0538

PREPARED BY:
ARLETH & ASSOCIATES

382 MAIN STREET
 DEADWOOD, SD 57732
 605-578-1637

JOB NO.
 03-0003

DATE: 10/31/03, 11/18
 SCALE: 1" = 100'
 DRAWN: WJD

APPROVED:
 DWG: RR-IV_PLAT.DWG