

LOTS 1A → 4B, SUB #2, SEC 4, T1N, R7E, BHM

04PL006



**Surveyor's Note:**

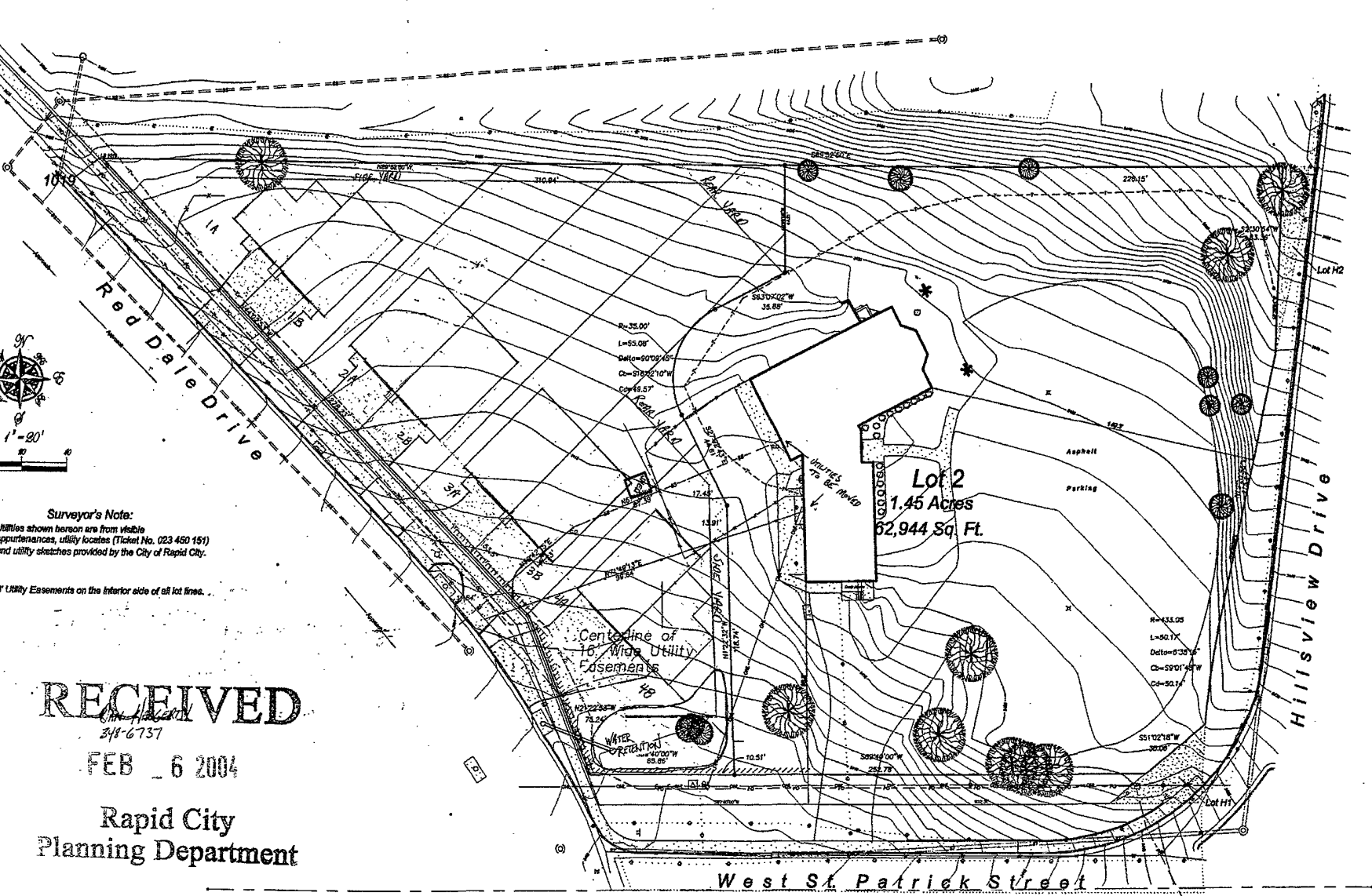
Utilities shown hereon are from visible appurtenances, utility locates (Ticket No. 023 460 151) and utility sketches provided by the City of Rapid City.

8' Utility Easements on the interior side of all lot lines.

**RECEIVED**

FEB 6 2004

Rapid City  
Planning Department



PROJECT No. 042403  
1030 MAIN STREET, P.O. BOX 8154  
RAPID CITY, SOUTH DAKOTA 57709  
(605) 346-1538 FAX (605) 341-1112

REVISIONS: 50002  
DRAWN BY: JMF  
CHECKED BY: WF  
DATE: 12/20/02  
FISK LAND SURVEYING  
AND CONSULTING ENGINEERS, INC.

Site Plan - Lot 1 - SW1/4 SW1/4 Section 4, T1N, R7E, BHM  
Rapid City, South Dakota  
Canyon Lake Church of God - 1829 Hillsview Drive