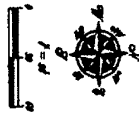


04PD006

# LATE SUBMITTAL



Lot 4

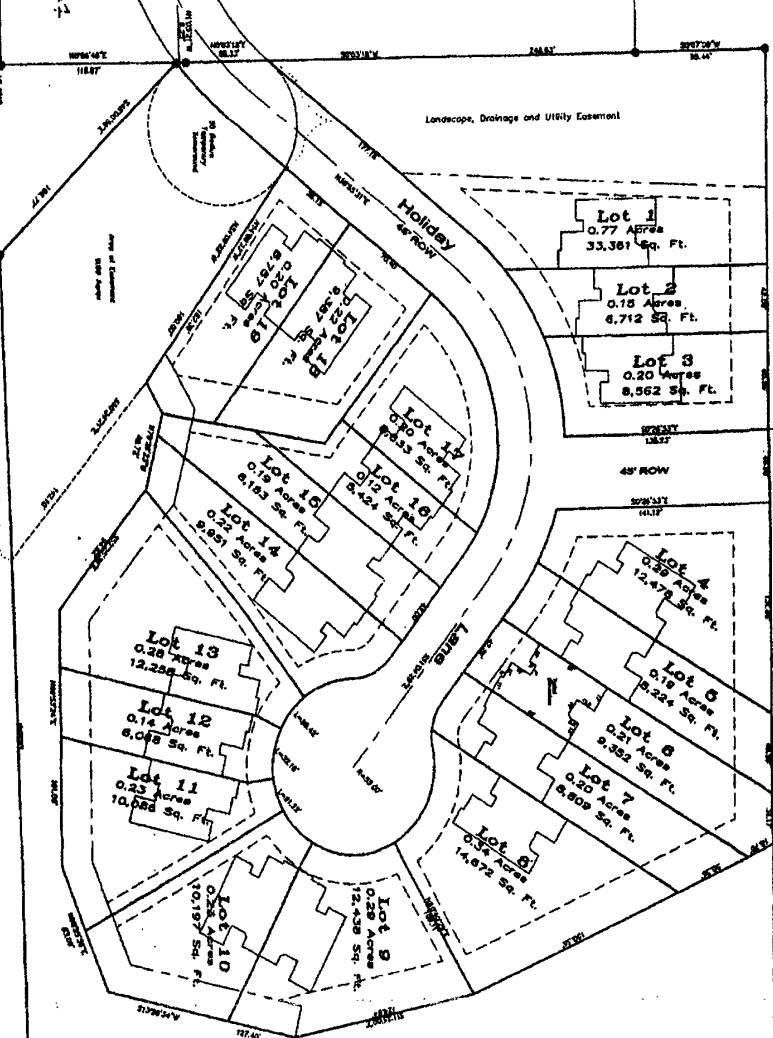
SEAN CRISTOFER

Lot 22

FRIDGEE

Lot 7

7 STRIPS



Balance of Parcel A

NOTE: The lot configurations and easements shown on this plan were prepared from the original plat and are subject to the provisions of the plat. The lot configurations and easements shown on this plan are not to be construed as a representation or warranty of the accuracy of the original plat or the accuracy of the lot configurations and easements shown on this plan.

## RECEIVED

FEB - 9 2004

Rapid City

Proposed Townhome Layout  
 Parcel A of Tract SB of Springbrook Acres Addition  
 Rapid City, Pennington County, South Dakota

DESIGNED BY: [Signature] DATE: 12/22/03  
 DRAWN BY: [Signature] DATE: 12/22/03  
**FISK LAND SURVEYING**  
 AND CONSULTING ENGINEERS, INC.  
 1001 17th St. N. Rapid City, SD 57701  
 (605) 342-3333