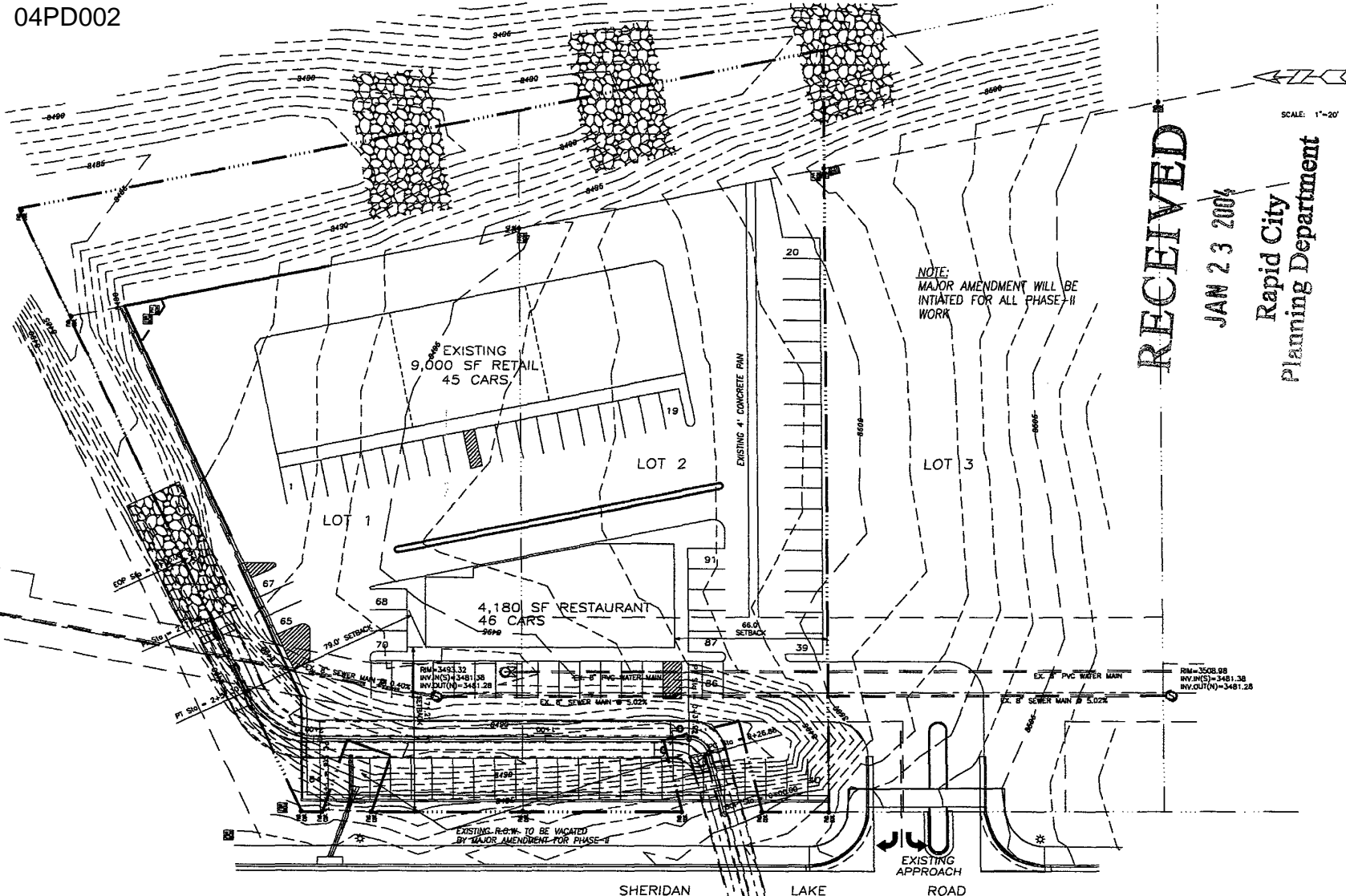


04PD002 04-13-03 09:33-09:36 StripMap.mxd, Blam-DWG, Envyout1, 1/25/2004 11:54:05 AM, 133.97625



NOTE: MAJOR AMENDMENT WILL BE INITIATED FOR ALL PHASE-II WORK

RECEIVED

JAN 23 2004

Rapid City Planning Department

SCALE: 1"=20'

SHERIDAN LAKE ROAD

EXISTING R.O.W. TO BE VACATED BY MAJOR AMENDMENT FOR PHASE I

EXISTING APPROACH