

SCALE 1"=20'





MODIFIED LANDSCAPING
 Feb 2-24-04

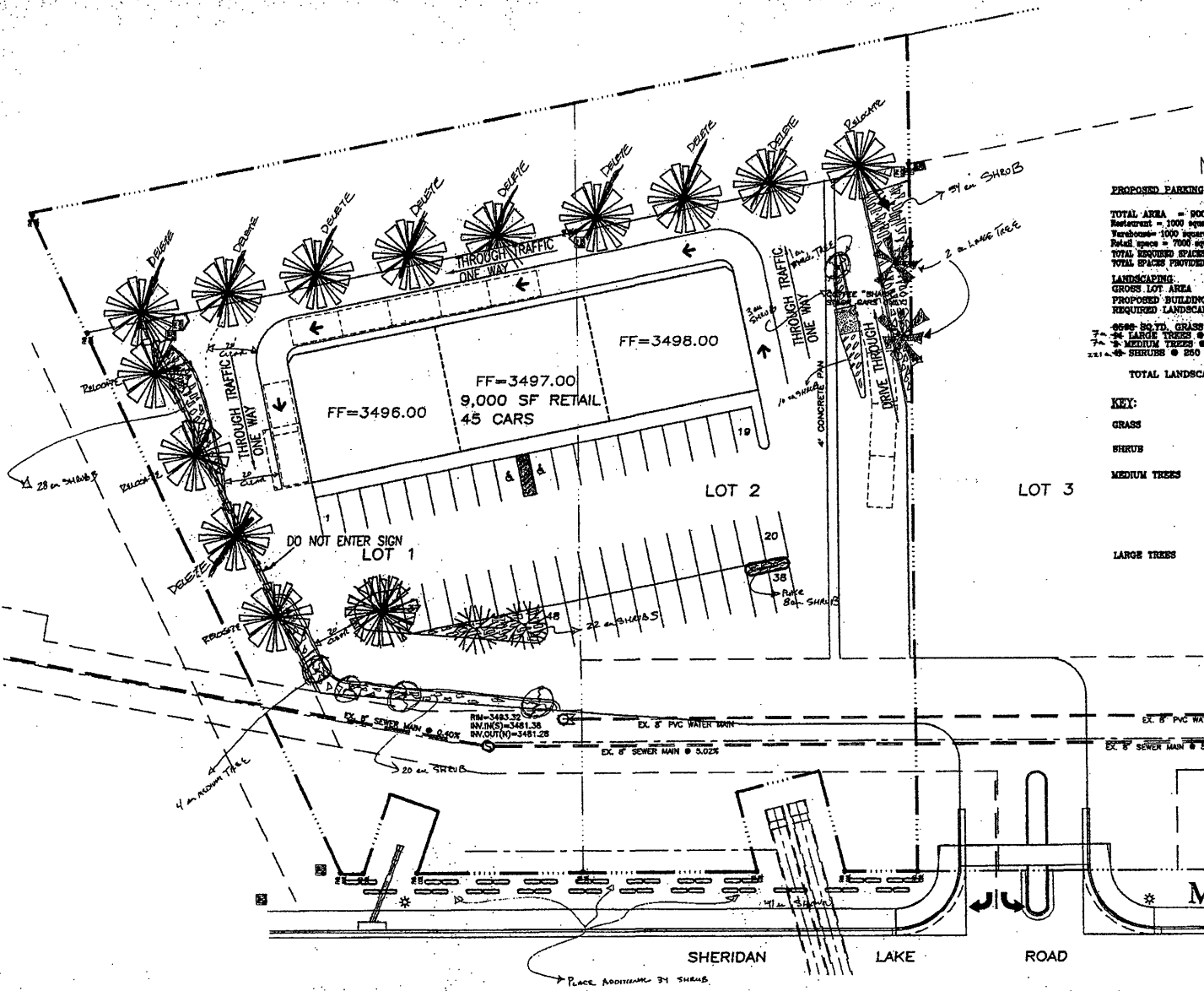
PROPOSED PARKING

TOTAL AREA = 9000 S.F.
 Restaurant = 1000 square feet @ 11 parking spaces per 1000 square feet = 11 Spaces
 Warehouse = 1000 square feet @ 0.25 parking spaces per 1000 square feet = 0.25 Spaces
 Retail space = 7000 square feet @ 1 parking spaces per 1000 square feet = 7 Spaces
 TOTAL REQUIRED SPACES = 38.25
 TOTAL SPACES PROVIDED = 37 spaces

LANDSCAPING:
 GROSS LOT AREA = 25,023 SQ.FT.
 PROPOSED BUILDING = 9,000 SQ.FT.
 REQUIRED LANDSCAPING POINTS = 78,083

6000 SQ.YD. GRASS @ 10 POINTS = 60,000
 24 LARGE TREES @ 2,000 POINTS = 48,000
 4 MEDIUM TREES @ 1,000 POINTS = 4,000
 214 SHRUBS @ 250 POINTS = 53,500
 TOTAL LANDSCAPING POINTS = 78,480

- KEY:
- GRASS 
 - SHRUB 
 - MEDIUM TREES 
 - LARGE TREES 



RECEIVED
 FEB 24 2004
 Rapid City Growth
 Management Department

D.D.I. DESIGN INTERNATIONAL, INC.
 DREAM
 PROFESSIONAL STRUCTURAL & CIVIL ENGINEERING CONSULTANTS
 1000 W. 10th St., Suite 200, Rapid City, SD 57701
 Tel: 605-342-1111 Fax: 605-342-1112

PROJECT LOCATION:	SECTION 22
W/4 OF SECTION 22	CITY OF RAPID CITY
W/4 OF SECTION 22	CITY OF RAPID CITY
PROJECT:	NOVEMBER 01/22/04
DESIGNER:	NOVEMBER 02/18/04
DATE:	NOVEMBER 02/18/04
SCALE:	AS SHOWN

AUTUMN HILLS PLAZA
 LOTS 1 & 2
 LANDSCAPING PLAN - PHASE ONE

TOTAL PLANTINGS IN ROW = 76 shrub 250 = 19,000 @ 24.7% OF TOTAL POINTS
 Balance of points within parking lot