

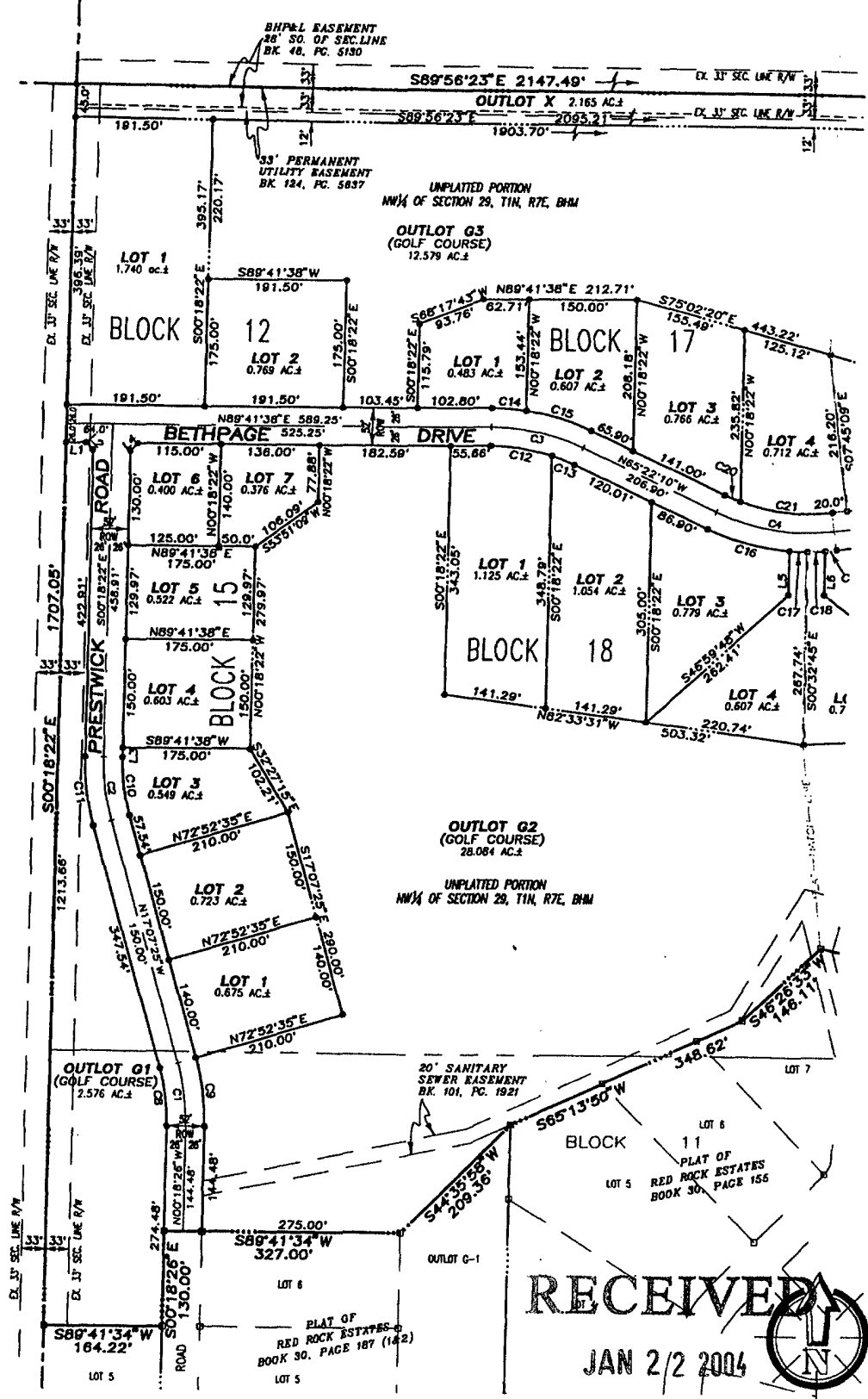
04SV002

# RED ROCK ESTATES

INCLUDING LOTS 1 THRU 2, BLOCK 12; LOTS 1 THRU 7, BLOCK 15;  
LOTS 1 THRU 10, BLOCK 17; LOTS 1 THRU 17, BLOCK 18;  
OUTLOTS G-1, G-2, G-3 & X AND DEDICATED STREETS

LOCATED IN THE UNPLATTED PORTION OF THE  
NW 1/4 OF SECTION 29, T1N, R7E, B1M  
RAPID CITY, PENNINGTON COUNTY, SOUTH DAKOTA

Plat being Revised



**RECEIVED**

JAN 2/2 2004

Rapid City  
Planning Department



PREPARED FOR:  
DREAM DESIGN INTERNATIONAL, INC.  
528 KANSAS CITY ST., SUITE 4  
RAPID CITY, SD 57701  
(605) 348-0536

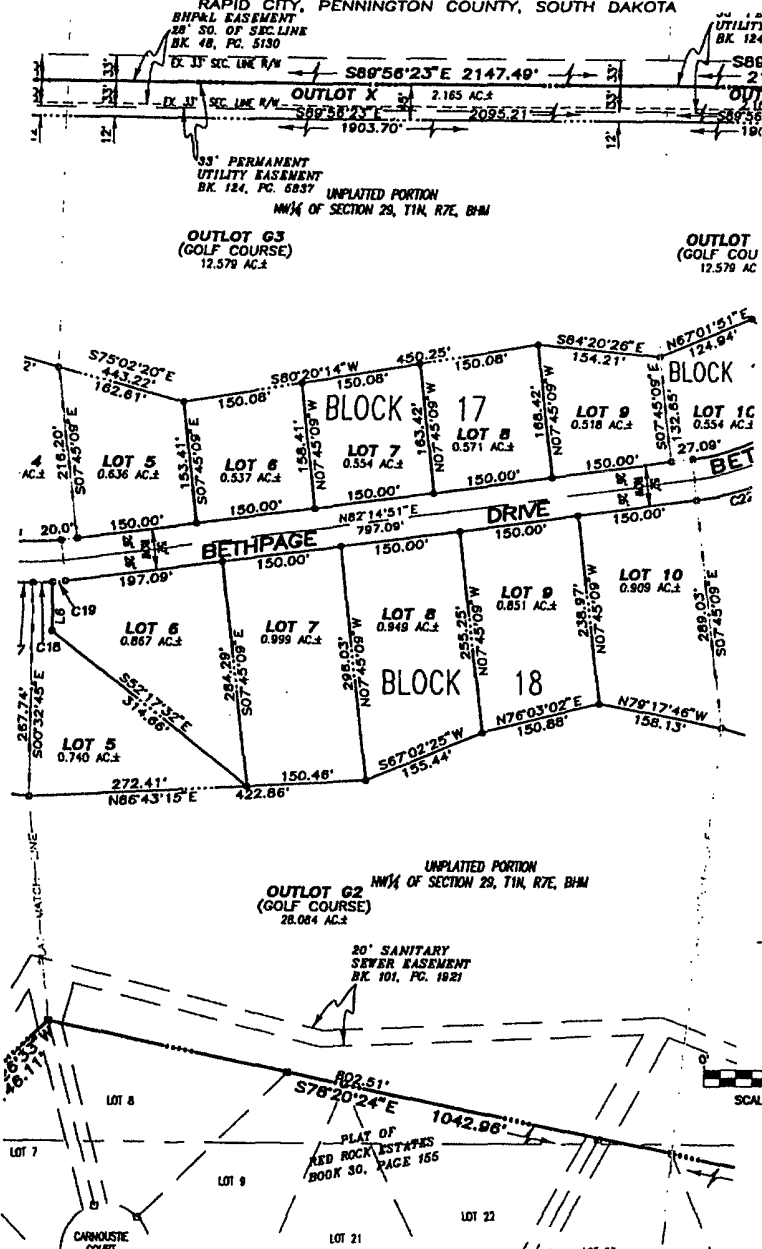
SCALE: 1 INCH = 100 FEET

04SV002

# RED ROCK ESTATES

INCLUDING LOTS 1 THRU 2, BLOCK 12; LOTS 1 THRU 7, BLOCK 15;  
 LOTS 1 THRU 10, BLOCK 17; LOTS 1 THRU 17, BLOCK 18;  
 OUTLOTS G-1, G-2, G-3 & X AND DEDICATED STREETS

LOCATED IN THE UNPLATTED PORTION OF THE  
 NW¼ OF SECTION 29, T1N, R7E, B1M  
 RAPID CITY, PENNINGTON COUNTY, SOUTH DAKOTA



**CURVE TABLE**

| NUMBER | RADIUS | DELTA ANGLE | ARC LENGTH | TANGENT | CHORD BEARING | CHORD LENGTH |
|--------|--------|-------------|------------|---------|---------------|--------------|
| C1     | 300.00 | 18°48'58"   | 88.05      | 44.34   | S08°42'56"E   | 87.73        |
| C2     | 300.00 | 18°48'58"   | 88.06      | 44.35   | S08°42'53"E   | 87.74        |
| C3     | 300.00 | 24°56'17"   | 130.57     | 65.33   | N07°50'18"W   | 129.34       |
| C4     | 300.00 | 32°22'58"   | 189.56     | 87.11   | S81°13'40"E   | 167.31       |
| C5     | 300.00 | 82°11'14"   | 430.33     | 261.65  | S14°09'14"W   | 394.37       |
| C6     | 300.00 | 49°22'47"   | 258.55     | 137.92  | N57°13'27"E   | 250.62       |
| C7     | 300.00 | 32°48'27"   | 171.76     | 88.32   | N16°27'50"E   | 168.44       |
| C8     | 300.00 | 16°48'58"   | 88.03      | 44.34   | S08°42'56"E   | 87.73        |
| C9     | 326.00 | 16°48'58"   | 85.86      | 48.18   | S08°42'56"E   | 85.34        |
| C10    | 274.00 | 16°48'58"   | 80.42      | 40.50   | S08°42'53"E   | 80.14        |
| C11    | 300.00 | 18°49'03"   | 88.08      | 44.35   | N08°42'53"W   | 87.74        |
| C12    | 300.00 | 17°55'40"   | 85.73      | 43.22   | S81°40'37"E   | 85.38        |
| C13    | 274.00 | 07°00'37"   | 33.62      | 16.78   | S88°52'26"E   | 33.50        |
| C14    | 326.00 | 08°19'31"   | 47.37      | 23.73   | N06°08'36"W   | 42.33        |
| C15    | 326.00 | 16°38'40"   | 94.51      | 47.58   | S73°40'30"E   | 94.18        |
| C16    | 326.00 | 20°46'42"   | 118.22     | 56.77   | S75°45'31"E   | 117.58       |
| C17    | 326.00 | 04°23'53"   | 25.02      | 12.52   | S88°20'48"E   | 25.02        |
| C18    | 326.00 | 04°23'53"   | 25.02      | 12.52   | S87°15'18"W   | 25.02        |
| C19    | 326.00 | 02°48'30"   | 15.88      | 7.98    | S83°39'06"W   | 15.90        |
| C20    | 274.00 | 05°00'38"   | 23.96      | 11.99   | S87°32'29"E   | 23.85        |
| C21    | 274.00 | 27°22'21"   | 130.80     | 66.72   | S84°03'59"E   | 128.66       |
| C22    | 326.00 | 18°11'16"   | 111.05     | 56.07   | S72°29'18"W   | 110.32       |
| C23    | 326.00 | 23°31'41"   | 133.87     | 67.86   | N55°57'50"E   | 132.93       |
| C24    | 55.00  | 79°26'35"   | 76.28      | 45.70   | N48°03'50"W   | 70.30        |
| C25    | 55.00  | 40°51'37"   | 39.22      | 20.49   | S74°47'04"W   | 38.40        |
| C26    | 55.00  | 81°33'39"   | 78.29      | 47.44   | S10°14'28"W   | 71.85        |
| C27    | 55.00  | 75°42'55"   | 72.68      | 42.75   | N08°03'52"W   | 67.51        |
| C28    | 30.00  | 48°47'23"   | 25.55      | 13.61   | N61°31'30"W   | 24.78        |
| C29    | 30.00  | 48°47'23"   | 25.55      | 13.61   | N32°44'14"W   | 24.78        |
| C30    | 326.00 | 26°28'37"   | 150.64     | 76.69   | S13°17'53"W   | 149.30       |
| C31    | 274.00 | 40°43'47"   | 184.77     | 101.70  | S81°33'00"W   | 180.70       |
| C32    | 274.00 | 41°27'31"   | 188.28     | 103.70  | N29°47'23"E   | 183.97       |

**SHORT COURSE TABLE**

| NUMBER | DIRECTION   | DISTANCE |
|--------|-------------|----------|
| L1     | S89°41'30"W | 28.00'   |
| L2     | N45°18'22"W | 14.14'   |
| L3     | N00°18'22"W | 12.94'   |
| L4     | S44°41'38"W | 14.14'   |
| L5     | S00°32'45"E | 60.88'   |
| L6     | S00°32'45"E | 60.88'   |
| L7     | N80°35'40"E | 14.80'   |
| L8     | S57°07'56"E | 19.49'   |
| L9     | N57°07'56"E | 19.49'   |
| L10    | N14°51'32"W | 14.80'   |

**NOTES:**

- MINOR DRAINAGE AND UTILITY EASEMENTS ARE HEREBY ESTABLISHED 8' WIDE ON THE INTERIOR SIDE OF ALL LOT LINES AND EXTERIOR OF RIGHT-OF-WAY, (EXCEPT WHERE MAJOR DRAINAGE EASEMENTS ARE LOCATED)
- TOTAL PLATTED AREA: 80,293 ACRES (LOTS 1-36 / LOTS 1-18, 20-43, 45-65) PUBLIC RIGHT-OF-WAY: 7,075 ACRES (DEDICATED FOR BUREAU USE BY THIS PLAT.)  
 OUTLOT G-1, G-2 & G-3 (GOLF COURSE): 43,239 ACRES  
 LOTS 17, 18, 19, 20, 21, 22, 23
- ANY MAJOR DRAINAGE EASEMENTS SHOWN HEREON SHALL BE KEPT FREE OF ALL OBSTRUCTIONS INCLUDING BUT NOT LIMITED TO BUILDINGS, WALLS, FENCES, HEDGES, TREES AND SHRUBS. THESE EASEMENTS GRANT TO ALL PUBLIC AUTHORITIES THE RIGHT TO CONSTRUCT, OPERATE, MAINTAIN, INSPECT AND REPAIR SUCH IMPROVEMENTS AND STRUCTURES AS IT DEEMS EXPEDIENT TO FACILITATE DRAINAGE FROM ANY SOURCE.
- NON-ACCESS EASEMENTS ARE HEREBY ESTABLISHED ALONG THE FIRST FIFTY FEET OF CORNER LOTS OR AS INDICATED HEREON.



SCALE: 1 INCH = 100 FEET

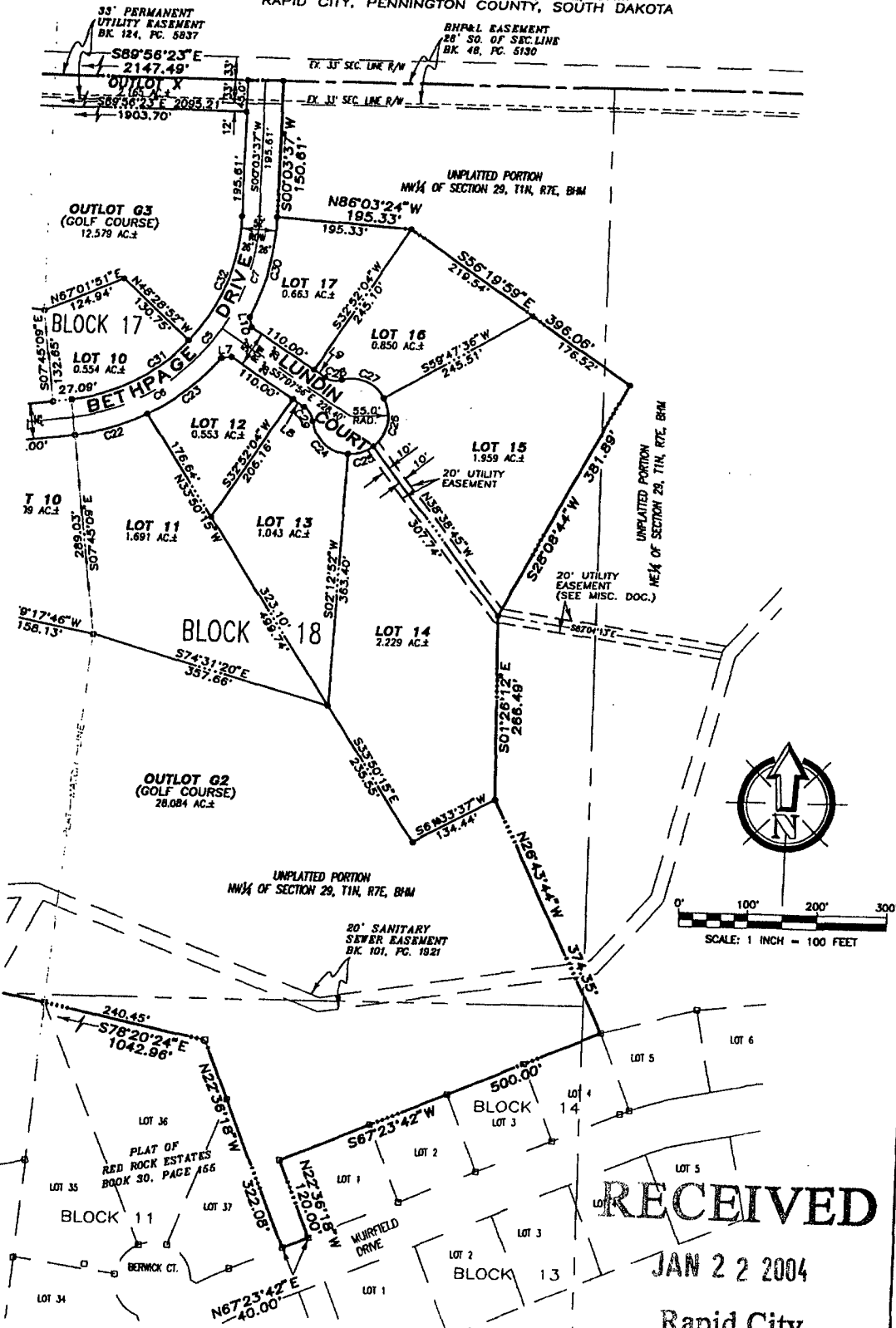
RECEIVED

PLANNING DEPARTMENT

# RED ROCK ESTATES

INCLUDING LOTS 1 THRU 2, BLOCK 12; LOTS 1 THRU 7, BLOCK 15;  
 LOTS 1 THRU 10, BLOCK 17; LOTS 1 THRU 17, BLOCK 18;  
 OUTLOTS G-1, G-2, G-3 & X AND DEDICATED STREETS

LOCATED IN THE UNPLATTED PORTION OF THE  
 NW<sup>1/4</sup> OF SECTION 29, T1N, R7E, BHM  
 RAPID CITY, PENNINGTON COUNTY, SOUTH DAKOTA



# RECEIVED

JAN 22 2004

Rapid City  
 Planning Department

### LEGEND

- DENOTES SET 5/8" REBAR WITH SURVEY CAP MARKED "RLS 3977"
  - ◻ DENOTES FOUND SURVEY MONUMENT
- BASIS OF BEARING: PER PREVIOUSLY RECORDED PLAT(S).