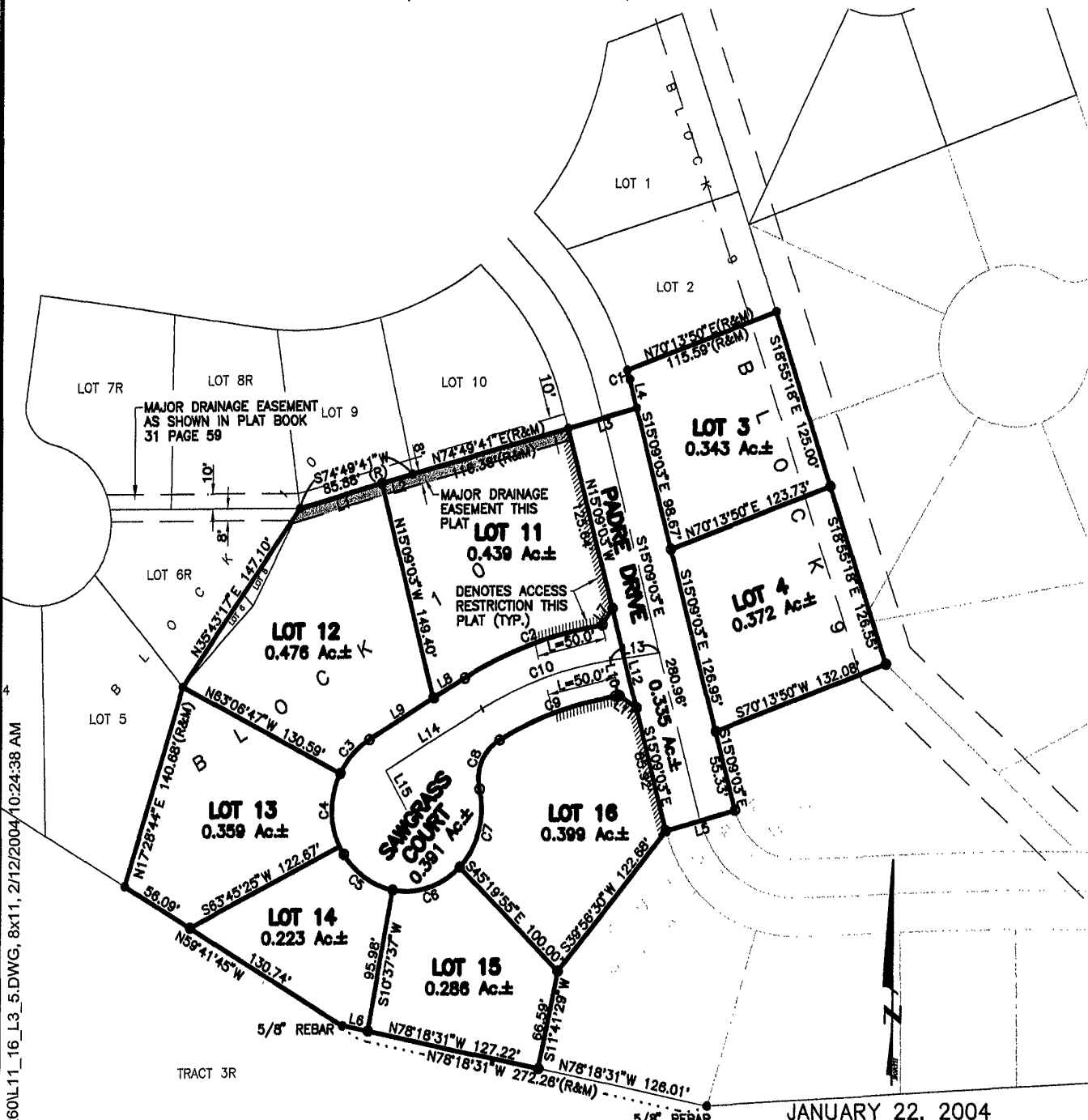


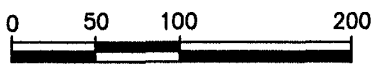
PLAT OF LOTS 11 THRU 16 OF BLOCK 10 AND LOTS 3 THRU 5 OF BLOCK 9 ELKS COUNTRY ESTATES

(formerly a portion of Lots 6 and 8 of Block 10 of Elks Country Estates and
a portion of Tract 1 of the E $\frac{1}{2}$ of Section 16)

LOCATED IN THE NE $\frac{1}{4}$ OF THE NW $\frac{1}{4}$
SECTION 16, T1N, R8E, BHM
RAPID CITY, PENNINGTON COUNTY, SOUTH DAKOTA



JANUARY 22, 2004



SCALE: 1" = 100'

C:\Drawings\12660L11_16_L3_5.DWG, 8x11, 2/12/2004 10:24:38 AM