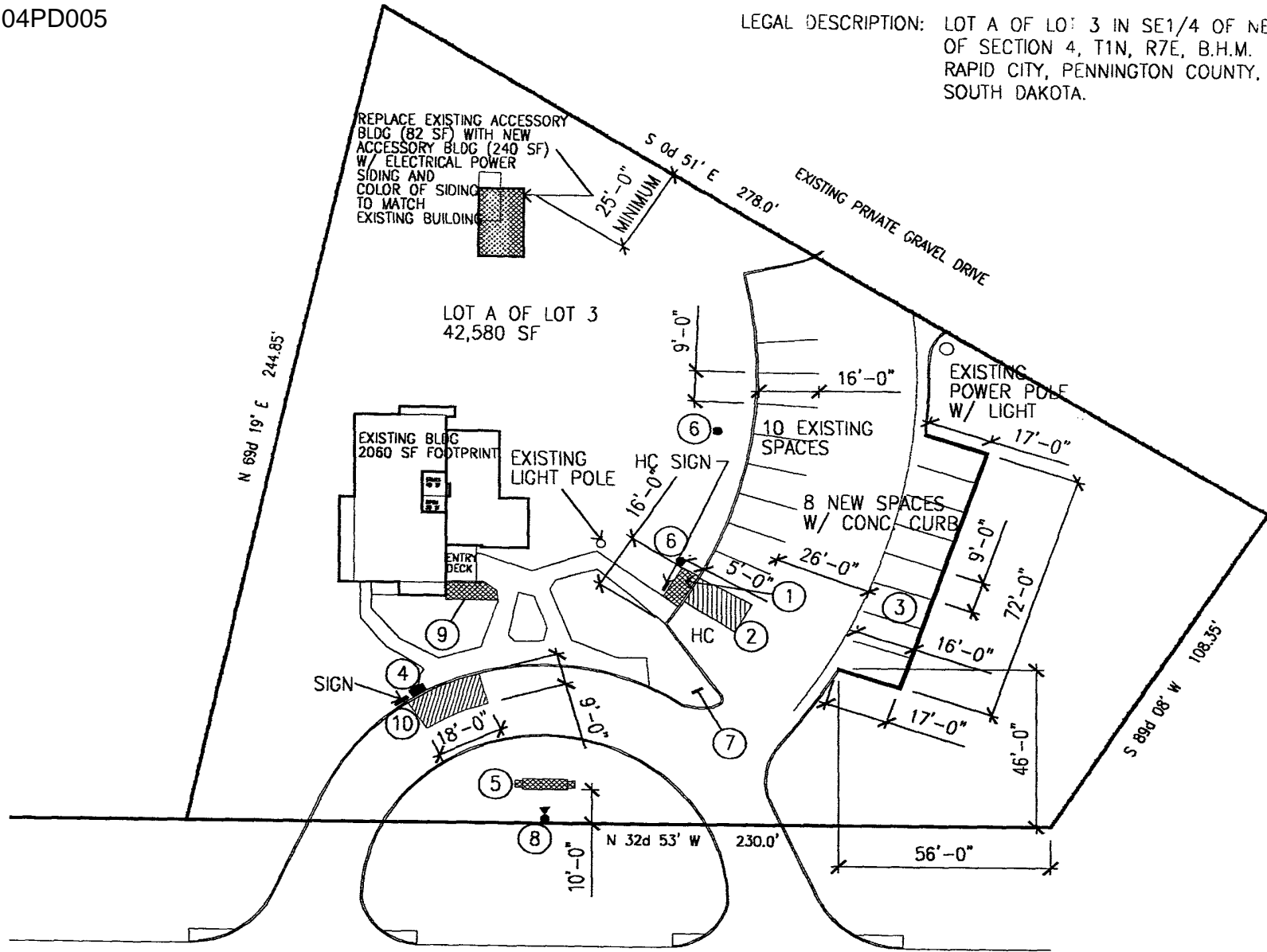


LEGAL DESCRIPTION: LOT A OF LOT 3 IN SE1/4 OF NE1/4 OF SECTION 4, T1N, R7E, B.H.M. RAPID CITY, PENNINGTON COUNTY, SOUTH DAKOTA.



SOO SAN DRIVE (100' ROW)

PROJECT NO: 330  
FILE NO:



DATE:  
01.22.04

SITE PLAN

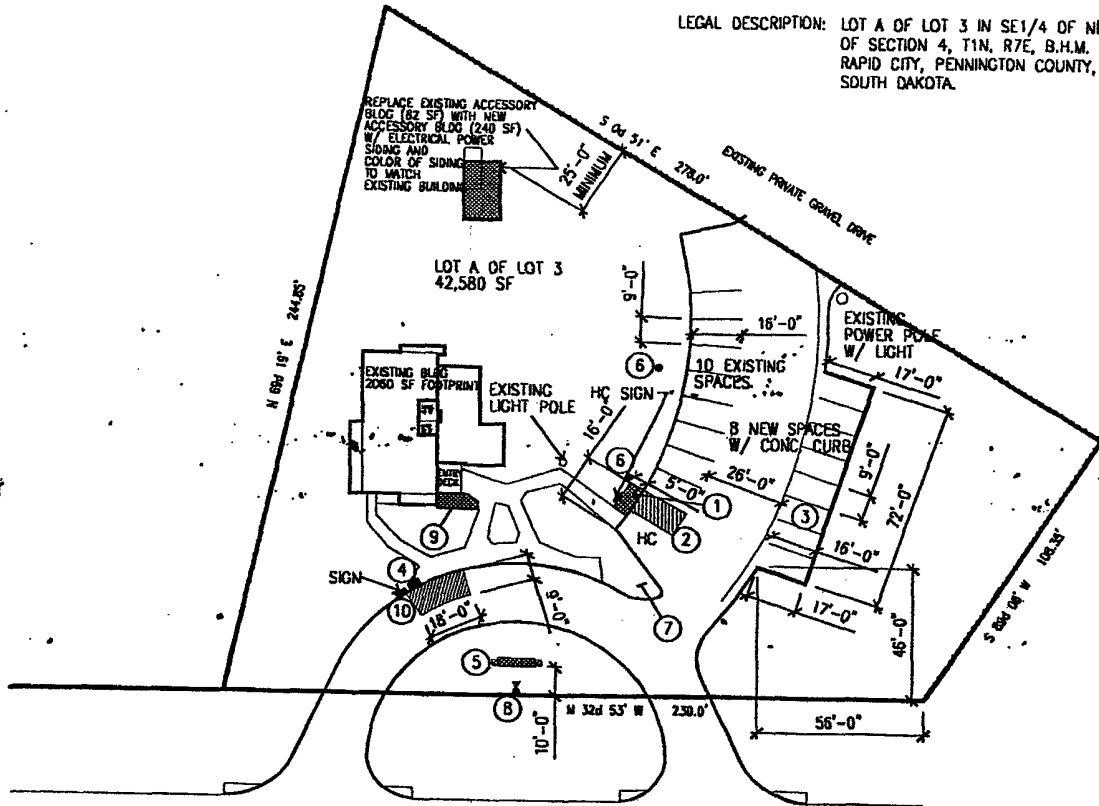
SCALE: 1" = 40'

INITIAL-FINAL PLAN  
FOR PLAN DEVELOPMENT  
RAPID CITY, SD

**KENNEDY  
KDESIGN  
GROUP INC**

141 BELLEVUE DRIVE  
RAPID CITY, SD 57701  
PHONE 605.542.5314  
FAX 605.944.9968

LEGAL DESCRIPTION: LOT A OF LOT 3 IN SE1/4 OF NE1/4 OF SECTION 4, T1N, R7E, B.H.M. RAPID CITY, PENNINGTON COUNTY, SOUTH DAKOTA.



- 1 NEW CONCRETE SIDEWALK WITH CURB CUT THE ALLOW HANDICAP ACCESS FROM THE HANDICAP PARKING SPACE TO THE EXISTING SIDEWALK.
- 2 RE-STRIPE FOR HANDICAP VAN PARKING SPACE WITH SIGNAGE CONFORMING TO ADA CODES AND RESTRIPE REMAINING SPACES.
- 3 NEW ASPHALT AND CONCRETE CURBS FOR 8 NEW PARKING SPACES. DEMO AS NECESSARY THE EXISTING CURBS.
- 4 NEW MAIL BOX STANDARD WITH BOXES CONSTRUCTED TO POST OFFICE STANDARDS.
- 5 NEW SIGN, SEE DRAWING FOR MAXIMUM SIZES.
- 6 NEW LIGHT POLE, WATCH HEIGHT AND STYLE AS THE EXISTING LIGHT POLE NEAR THE BUILDINGS ENTRY.
- 7 DIRECTIONAL PARKING INDICATOR SIGN.
- 8 DIRECTIONAL GROUND LIGHT FIXTURES (2) TO ILLUMINATE EACH SIDE OF SIGN.
- 9 NEW HANDICAP ACCESS INTO THE BUILDING CONSTRUCTED IN WOOD, STAINED TO MATCH EXISTING BUILDING.
- 10 PAINT, STRIPED ON EXISTING ASPHALT AS "NO PARKING ZONE" WITH WOOD SIGN INDICATING THE SAME.

PARKING REQUIREMENTS

UPPER LEVEL OFFICE	1380 SF	6.54 SPACES (5 PER 1000)
MAIN LEVEL OFFICE	585 SF	2.93 SPACES (5 PER 1000)
LOWER LEVEL OFFICE	1200 SF	6.00 SPACES (5 PER 1000)
<b>TOTAL BUILDING</b>	<b>3093 SF</b>	<b>16 (15.47) SPACES (5 PER 1000)</b>

**16 SPACES REQUIRED / 16 SPACES PROVIDED**

**RECEIVED**

JAN 23 2004

Rapid City  
Planning Department

REVISED SITE PLAN  
SCALE: 1" = 40'

