

04PD005

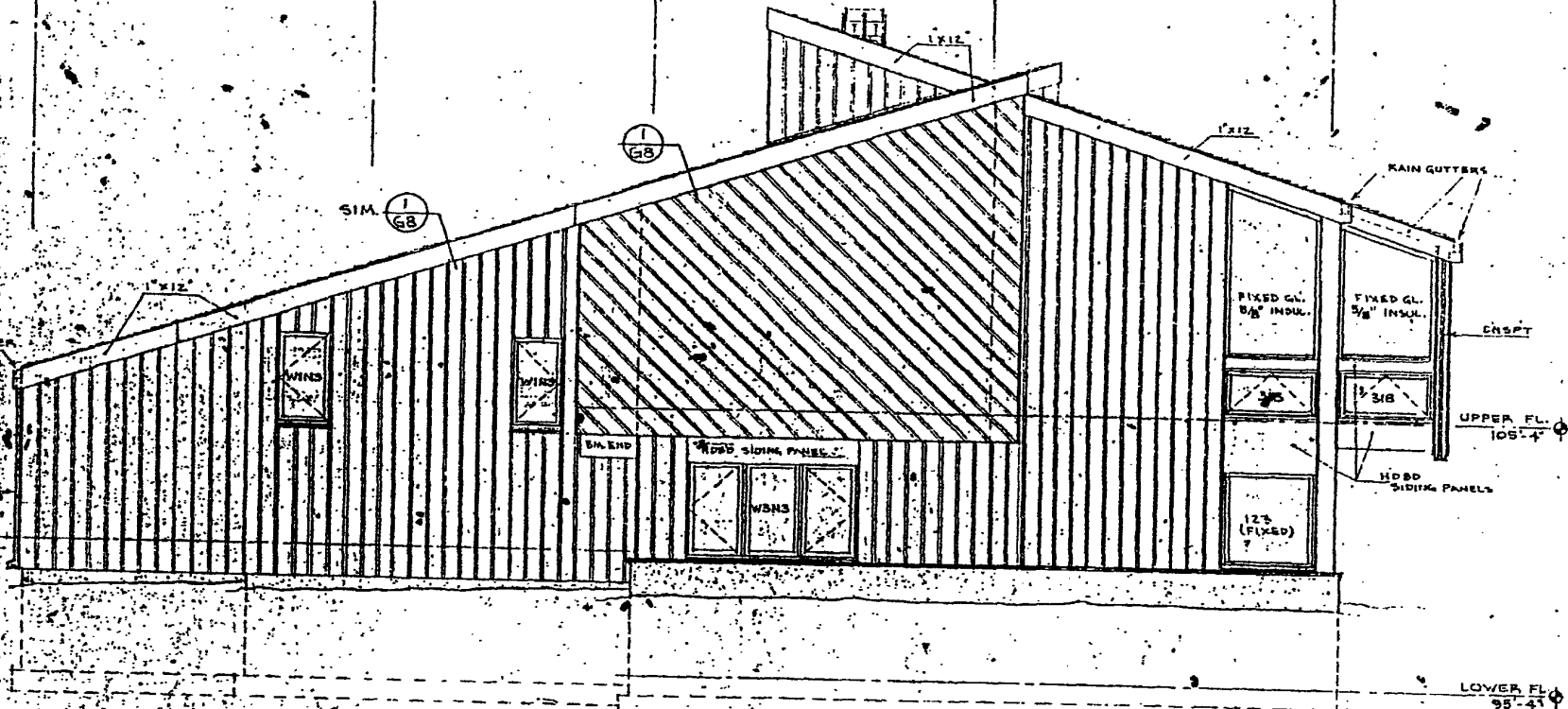
5

4

3

2

1



2  
68

EAST ELEVATION

UPPER FL. 105'-4"  
LOWER FL. 95'-4"

1/4" = 1'-0"



E

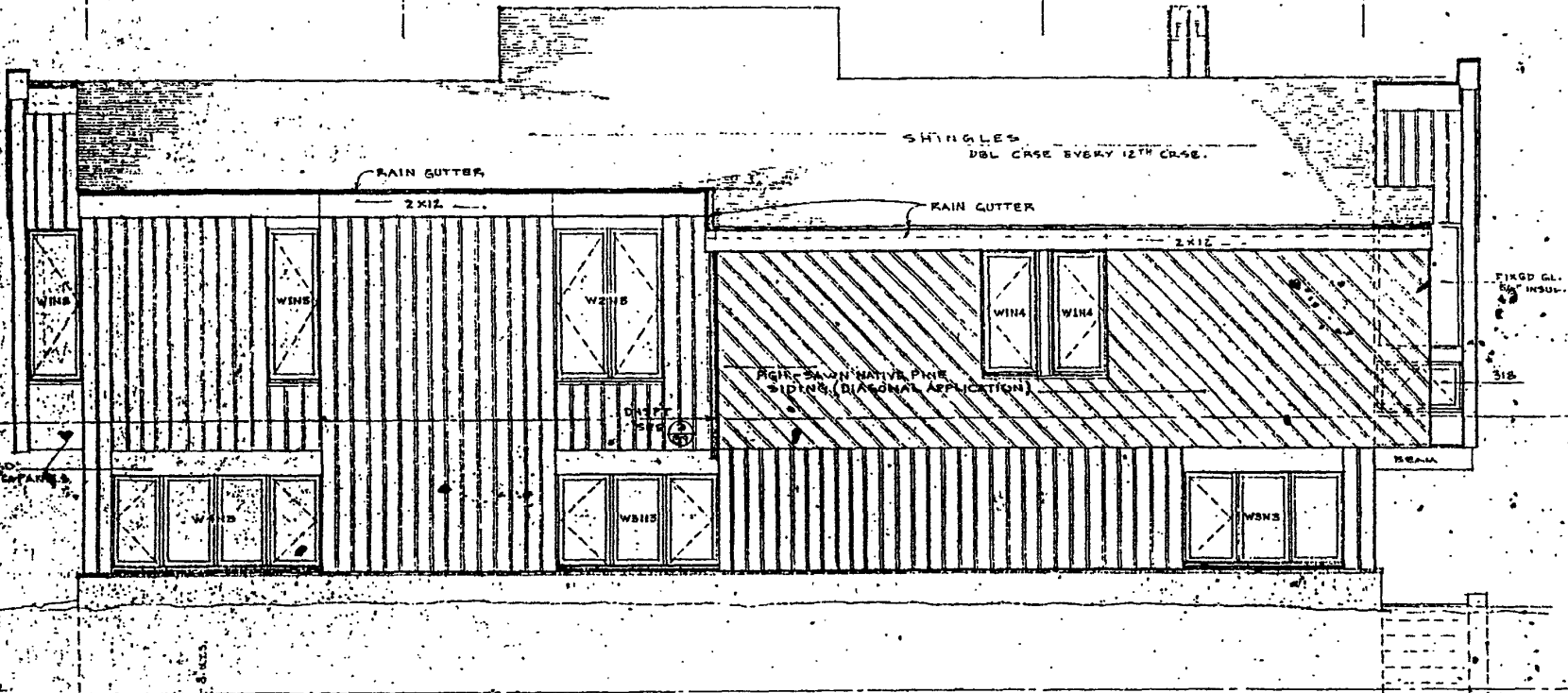
04PD005

D

C

B

A

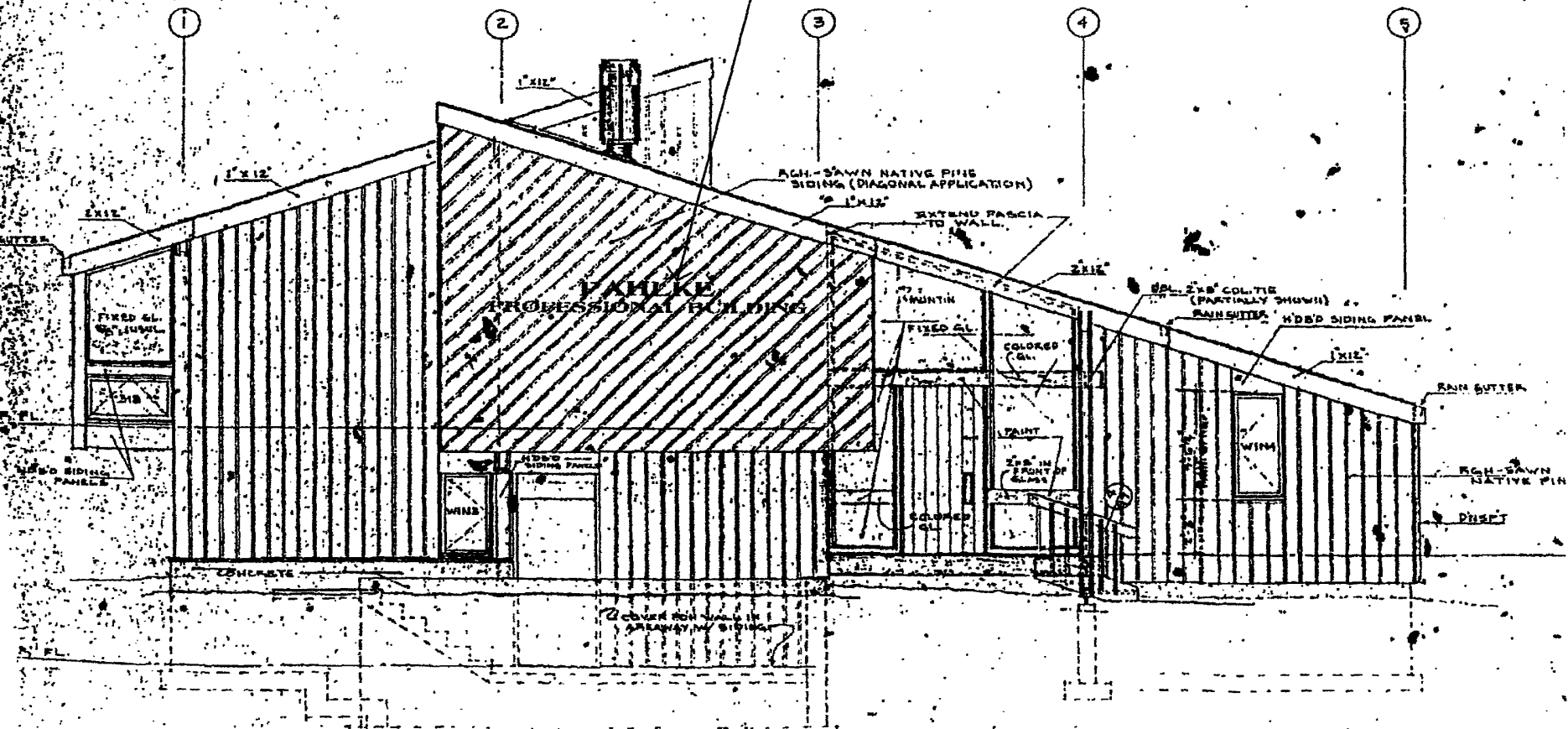


2  
69

NORTH ELEVATION

1/4" = 1'-0"

SIGNAGE ON THE WEST ELEVATION OF THE BUILDING. INDIVIDUAL LETTERS, WOOD OR METAL, IN GOLD OR POLISH BRASS, 6 INCHES TO 15 INCHES HIGH, MOUNTED 10 TO 15 FEET ABOVE GRADE ON WEST EXTERIOR WALL.



1 WEST ELEVATION

NOTE: DES

1/4" = 1'-0"