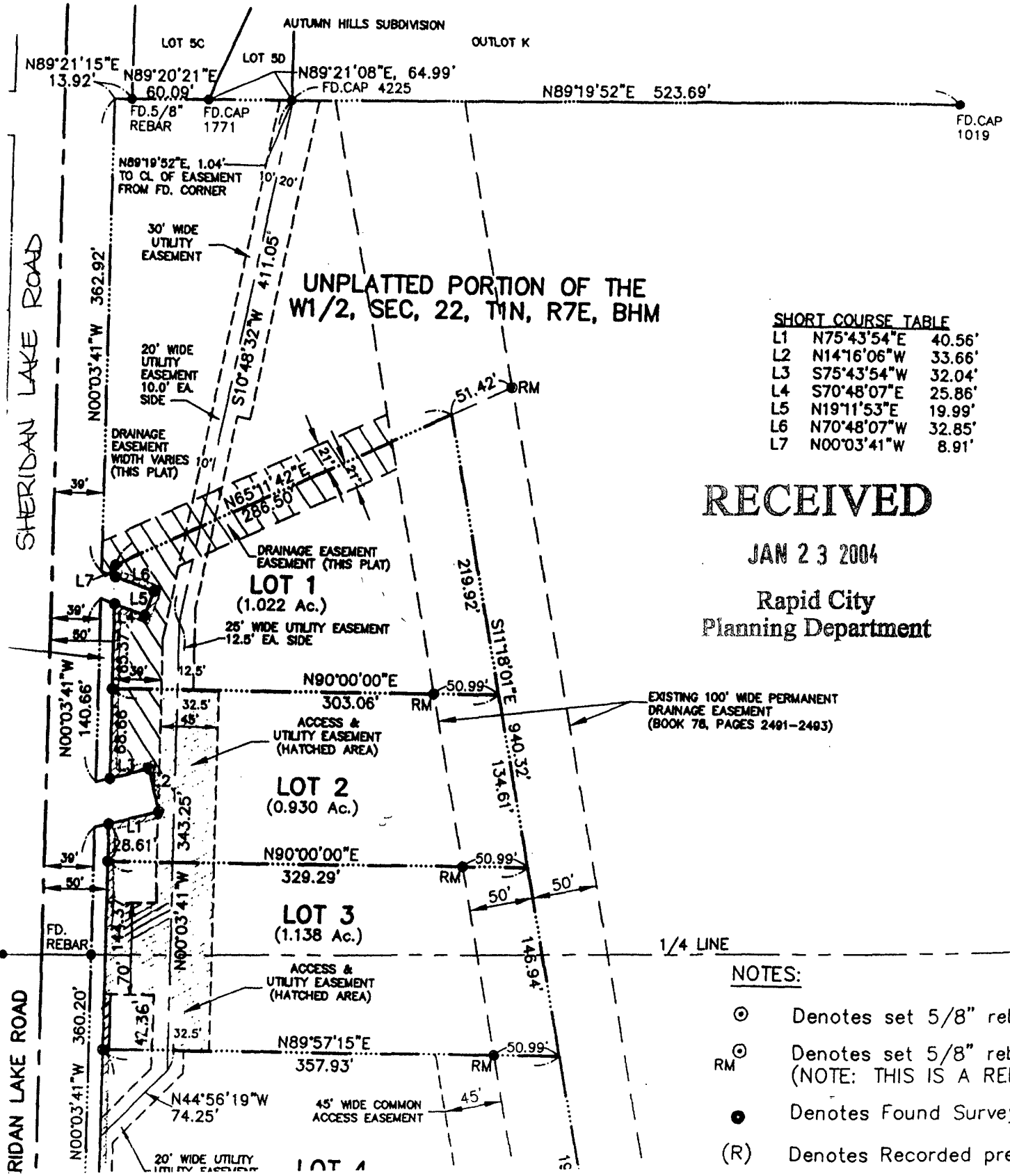


LOTS 1 THROUGH 4 OF AUTUMN HILLS PLAZA SUBDIVISION

04PD002

IN NW 1/4 OF THE SW 1/4 AND THE SW 1/4 OF THE NW 1/4
OF SECTION 22, T1N, R7E, BHM,
RAPID CITY, PENNINGTON COUNTY, SOUTH DAKOTA.



**UNPLATTED PORTION OF THE
W1/2, SEC. 22, T1N, R7E, BHM**

SHORT COURSE TABLE

L1	N75°43'54"E	40.56'
L2	N14°16'06"W	33.66'
L3	S75°43'54"W	32.04'
L4	S70°48'07"E	25.86'
L5	N19°11'53"E	19.99'
L6	N70°48'07"W	32.85'
L7	N00°03'41"W	8.91'

RECEIVED

JAN 23 2004

Rapid City
Planning Department

EXISTING 100' WIDE PERMANENT
DRAINAGE EASEMENT
(BOOK 78, PAGES 2401-2403)

NOTES:

- ⊙ Denotes set 5/8" rebar
- ⊙ Denotes set 5/8" rebar (NOTE: THIS IS A REFERENCE MONUMENT)
- Denotes Found Survey Monument
- (R) Denotes Recorded previous plat