

03PL112

Fountain  
Plaza Drive

TRACT H  
Wesleyan Christian Center

Tract F

Tract M2  
0.896 Acres

Tract M1  
0.896 Acres

# Plat of Tract M1 and M2 of the Fountain Springs Business Park

Located in the NE¼ of the SE¼ of Section 27, and in the NW¼ SW¼ of Section 26, T2N, R7E, BHM, Rapid City, Penninton County, South Dakota

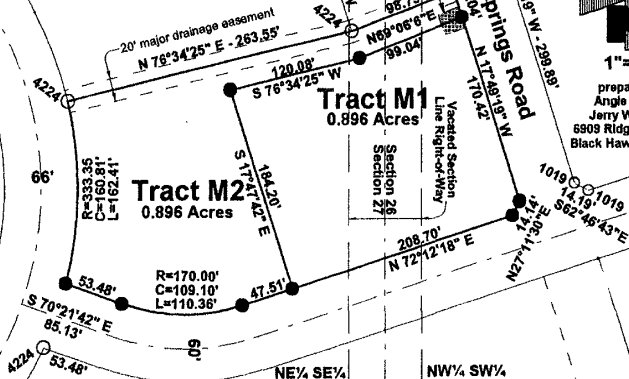


1"=100'

prepared by:  
Angle Surveys  
Jerry Wendland  
6909 Ridgeview Drive  
Black Hawk, SD 57718

- Denotes: Found Corner as described
- Denotes: Set Corner 5/8" rebar with cap #4224

Utility & Minor  
Drainage Easements:  
8' wide on the interior  
side of all lot lines



4224

N 17°49'19" W - 298.89'

4224

N 17°49'19" W - 298.89'

4224

N 17°49'19" W - 298.89'

4224

N 17°49'19" W - 298.89'

4224

N 17°49'19" W - 298.89'

4224

N 17°49'19" W - 298.89'

4224

N 17°49'19" W - 298.89'

4224

N 17°49'19" W - 298.89'

4224

N 17°49'19" W - 298.89'

4224

N 17°49'19" W - 298.89'

4224

N 17°49'19" W - 298.89'

4224

N 17°49'19" W - 298.89'

4224

N 17°49'19" W - 298.89'

4224

N 17°49'19" W - 298.89'

4224

N 17°49'19" W - 298.89'

4224

N 17°49'19" W - 298.89'

4224

N 17°49'19" W - 298.89'

4224

rebar

Sunny Springs Road

Harmony Heights Lane

Section 26  
Section 27

Vacated Section  
Line Right-of-Way

20' major drainage easement

20' Shared Access

66'

66'

66'

66'

66'

66'

66'

66'

66'

66'

66'

66'

66'

66'

66'

66'

66'

66'

66'

66'

66'

66'

66'

66'

66'

66'

66'

66'

66'

66'

66'

66'

66'

66'

66'

66'

66'

66'

66'

66'

66'

66'

66'

66'

66'

66'

66'

66'

66'

66'

66'

66'

66'

66'

66'

66'

66'

66'

66'

66'

66'

66'

66'

66'

66'

66'

66'

66'

66'

66'

66'

66'

66'

66'

66'

66'

66'

66'

66'

66'

66'

66'

66'

66'

66'

66'

66'

66'

66'

66'

66'

66'

66'

66'

66'

66'

66'

66'

66'

66'

66'

66'

66'

66'

66'

66'

66'

66'

66'

66'

66'

66'

66'

66'

66'

66'

66'

66'

66'

66'

66'

66'

66'

66'

66'

66'

66'

66'

66'

66'

66'

66'

66'

66'

66'

66'

66'

66'

66'

66'

66'

66'

66'

66'

66'

66'

66'

66'

66'

66'

66'

66'

66'

66'

66'

66'

66'

66'

66'

66'

66'

66'

66'

66'

66'

66'

66'

66'

66'

66'

66'

66'

66'

66'

66'

66'

66'

66'

66'

66'

66'

66'

66'

66'

66'

66'

66'

66'

66'

66'

66'

66'

66'

66'

66'

66'

66'

66'

66'

66'

66'

66'

66'

66'

66'

66'

66'

66'

66'

66'

66'

66'

66'

66'

66'

66'

66'

66'

66'

66'

66'

66'

66'

66'

66'

66'

66'

66'

66'

66'

66'

66'

66'

66'

66'

66'

66'

66'

66'

66'

66'

66'

66'

66'

66'

66'

66'

66'

66'

66'

66'

66'