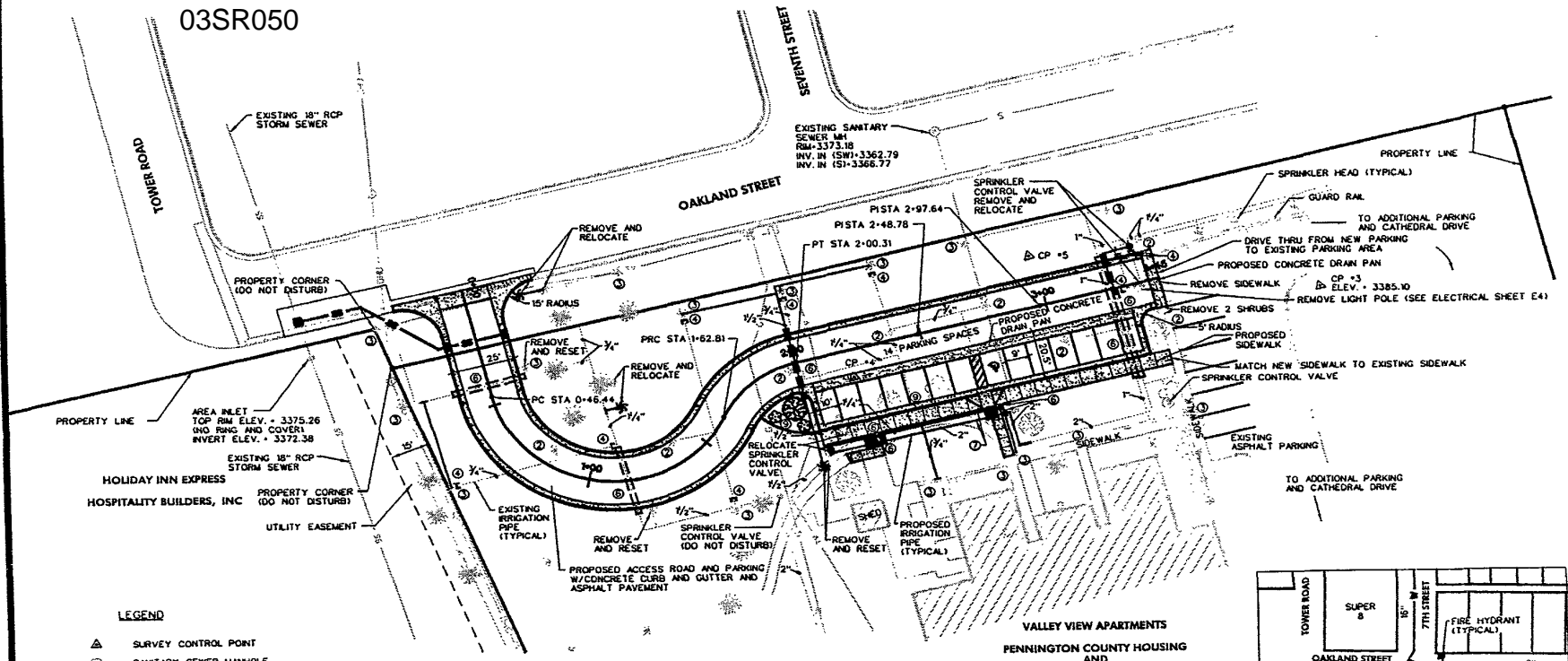


03SR050

DATE: 10-11-2001  
 SCALE: AS SHOWN  
 JOB NO: 03-887  
 FILE: 103SR050.DWG  
 REVISIONS:



PENNINGTON COUNTY HOUSING  
 AND  
 REDEVELOPMENT COMMISSION  
 RAPID CITY, SOUTH DAKOTA

VALLEY VIEW APARTMENTS  
 EXISTING AND REVISED  
 SPRINKLER SYSTEM LAYOUT

**LEGEND**

- ▲ SURVEY CONTROL POINT
- ⊙ SANITARY SEWER MANHOLE
- ⊙ EXISTING SPRINKLER HEAD
- ⊙ LIGHT POLE
- ⊙ GAS UTILITY POLE
- ⊙ GAS VALVE
- ⊙ GAS LINE MARKER
- ⊙ TELEPHONE BOX
- IV — UNDERGROUND TV CABLE
- G — GAS LINE
- U — OVERHEAD UTILITY LINE
- ⊙ BUSH, SHRUB
- ⊙ DECIDUOUS TREE
- ⊙ CONIFER TREE

NOTE: THE DRAWING SHOWS THE LAYOUT OF THE EXISTING OPERATIONAL SPRINKLER SYSTEM AND THE PROPOSED REVISIONS.  
 ALL IRRIGATION PIPING IS ASSUMED TO BE 1/2" UNLESS OTHERWISE SIZED, FIELD VERIFY EXISTING PIPING

- ① REMOVE AND SALVAGE FOR THE OWNER ALL SPRINKLER HEADS THAT CONFLICT WITH THE GRADING AND CONSTRUCTION OF THE PROJECT. WHERE NOTED REINSTALL THE RAISED BARRI PANS AT THE LOCATIONS NOTED ON THE DRAWING AND PROTECT THE OTHER SPRINKLER HEADS FROM BEING DISTURBED.
- ② REMOVE SPRINKLER HEAD.
- ③ SPRINKLER HEAD TO REMAIN.
- ④ CAP EXISTING IRRIGATION PIPE.
- ⑤ THE CONTRACTOR TO VERIFY ALL PIPE SIZES.
- ⑥ PROVIDE NEW 3" OR 4" SLEEVE.
- ⑦ NEW IRRIGATION LINES ARE SHOWN FOR CLARITY PURPOSES. LOCATION MAY BE MOVED TO AVOID CONFLICTS WITH NEW LIGHT POLES AND BASES - SEE SHEET E4.
- ⑧ THE REVISED SPRINKLER SYSTEM SHALL BE PRESSURE TESTED AND OPERATIONAL, COMPLETE BEFORE ANY PAVING OPERATIONS.
- ⑨ REMOVE AND TRANSPLANT THE TREES AS SHOWN OR AS DIRECTED BY OWNER. ONE TREE SHALL BE PLANTED NEAR STA 1+75. 20' RT ALONG WITH 2 DWARF GUMBALL SPREA, CEDAR MULCH AND PLASTIC EDGING. A SECOND TREE SHALL BE TRANSPLANTED TO THE ADAMS STREET APARTMENT SITE AS SHOWN ON SHEET B ALONG WITH 3 DWARF GUMBALL SPREA, PLASTIC EDGING AND CEDAR MULCH. THE THIRD TREE SHALL BE TRANSPLANTED ON SITE. THE THREE DESIGNATED SHRUBS SHALL BE REMOVED ONLY.

