

# City to ease law on some setbacks

By Bill Cissell  
Journal Staff Writer

According to Rapid City Mayor Jim Shaw, the city will change its setback rules to accommodate wheelchair ramps.

The ramps became an issue when Rapid City resident Dennis Brant, 1701 Lodge St., had one built from his home to the sidewalk. A day after the ramp was completed, city officials told him it violated the city's setback ordinance.

The setback regulations govern how close to property lines construction can take place. Setbacks vary with the

type of zoning in the area. In residential areas, it is 19 feet, according to Brad Solon, plans examiner for Rapid City.

Brant has a prescription from his doctor for the ramp. It is necessary, the physician said, because Brant's left leg has been amputated below the knee due to diabetes, and he also recently had several toes removed from his right foot.

On Monday, Brant contacted the Rapid City Journal, as well as local, state and federal representatives.

He said he finally got to talk to Shaw, who told Brant that the city would change the ordinance and exclude wheelchair

ramps from setback regulations.

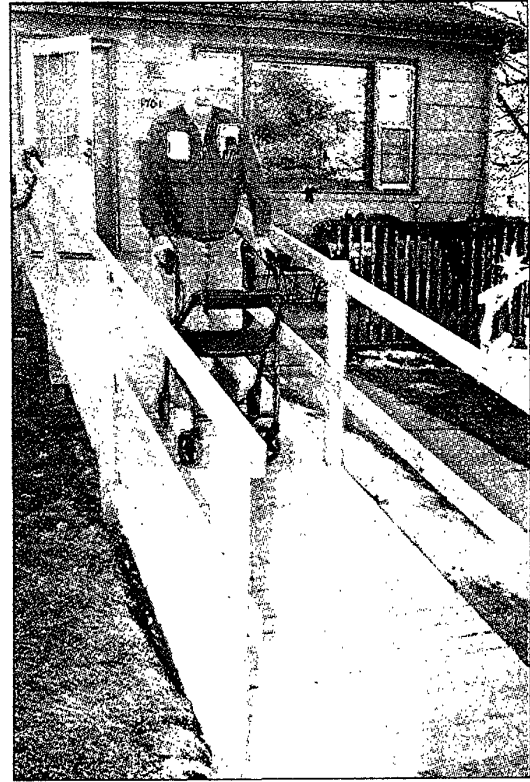
"We may have to have some guidelines, but it's different when you're talking about a garage or a storage shed versus a wheelchair ramp," Shaw said.

Shaw said he told Brant the city wouldn't take any enforcement action until the new rules can work their way through the system.

"It could take a couple of weeks," Shaw said.

Brant is happy with the mayor's decision and said it will help many people over the years.

Contact Bill Cissell at 394-8412 or [bill.cissell@rapidcityjournal.com](mailto:bill.cissell@rapidcityjournal.com)



Dennis Brant on the ramp of his home at 1701 Lodge St. in Rapid City. The ramp violates the city's setback ordinance, but Mayor Jim Shaw says the ordinance will be revised for those with a medical need.

Don Polovich/Journal staff