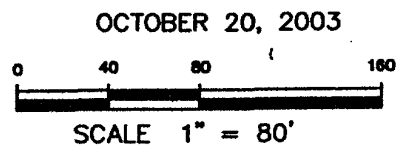
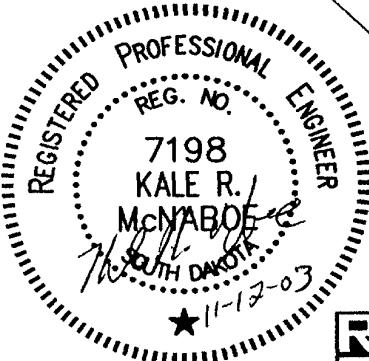
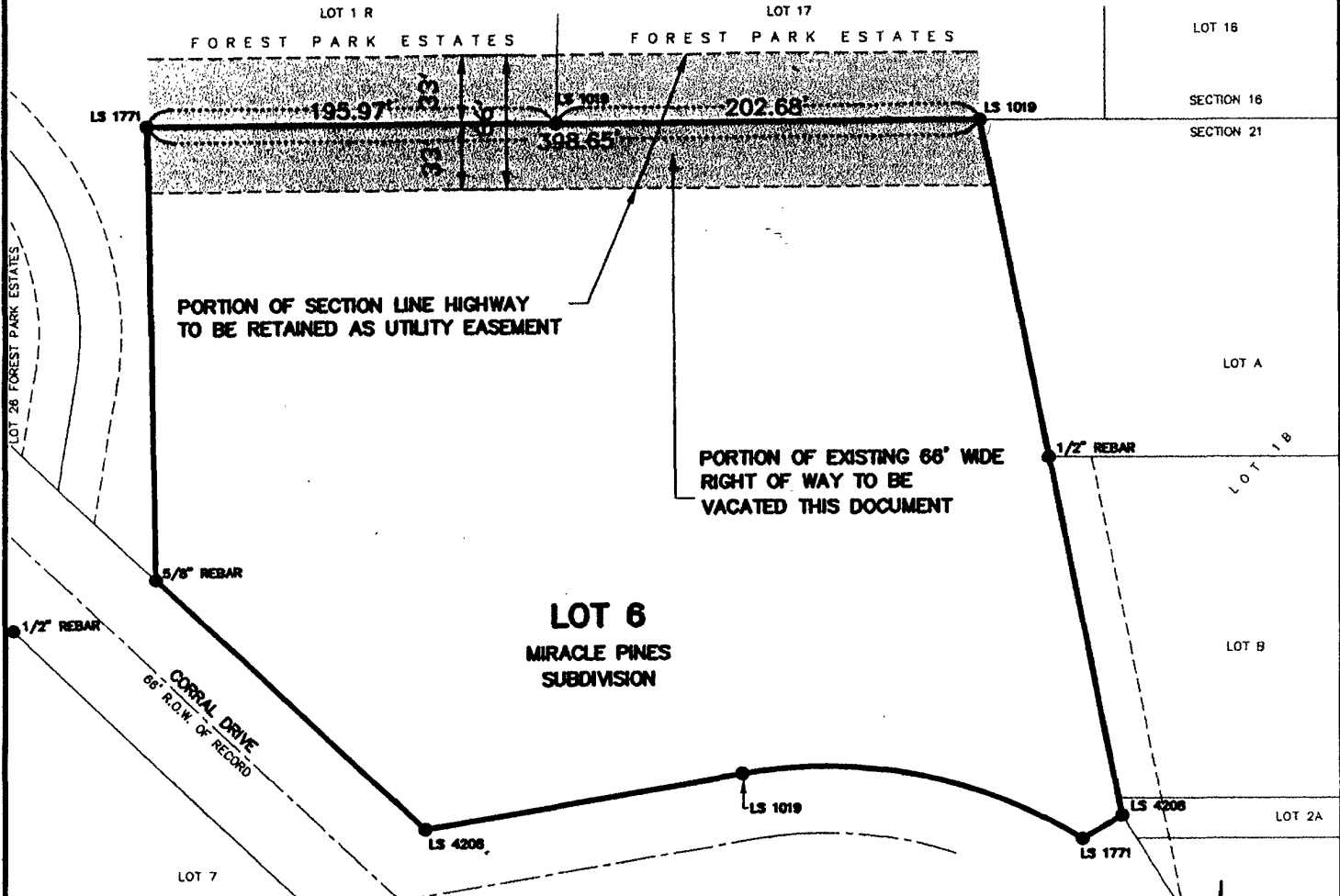


# VACATION OF SECTION LINE RIGHT-OF-WAY

LOCATED IN THE SE1/4 OF SW1/4 OF SECTION 16 AND  
IN THE NE1/4 OF NW1/4 OF SECTION 21  
T1N, R7E, BHM,  
RAPID CITY, PENNINGTON COUNTY, SOUTH DAKOTA



## Renner & Sperlich Engineering Co.



616 Sixth St. • Rapid City, SD 57701 • 605/342-1191  
FAX: 605/342-1405 • E-MAIL: RSEC@RAPIDNET.COM