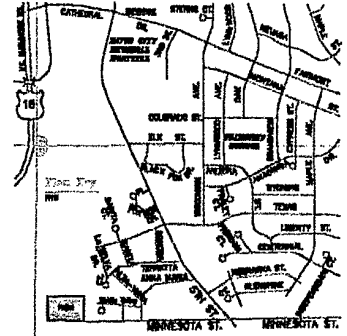


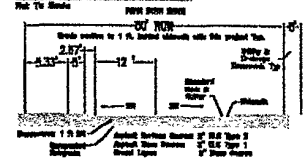


Scale: 1"=40'

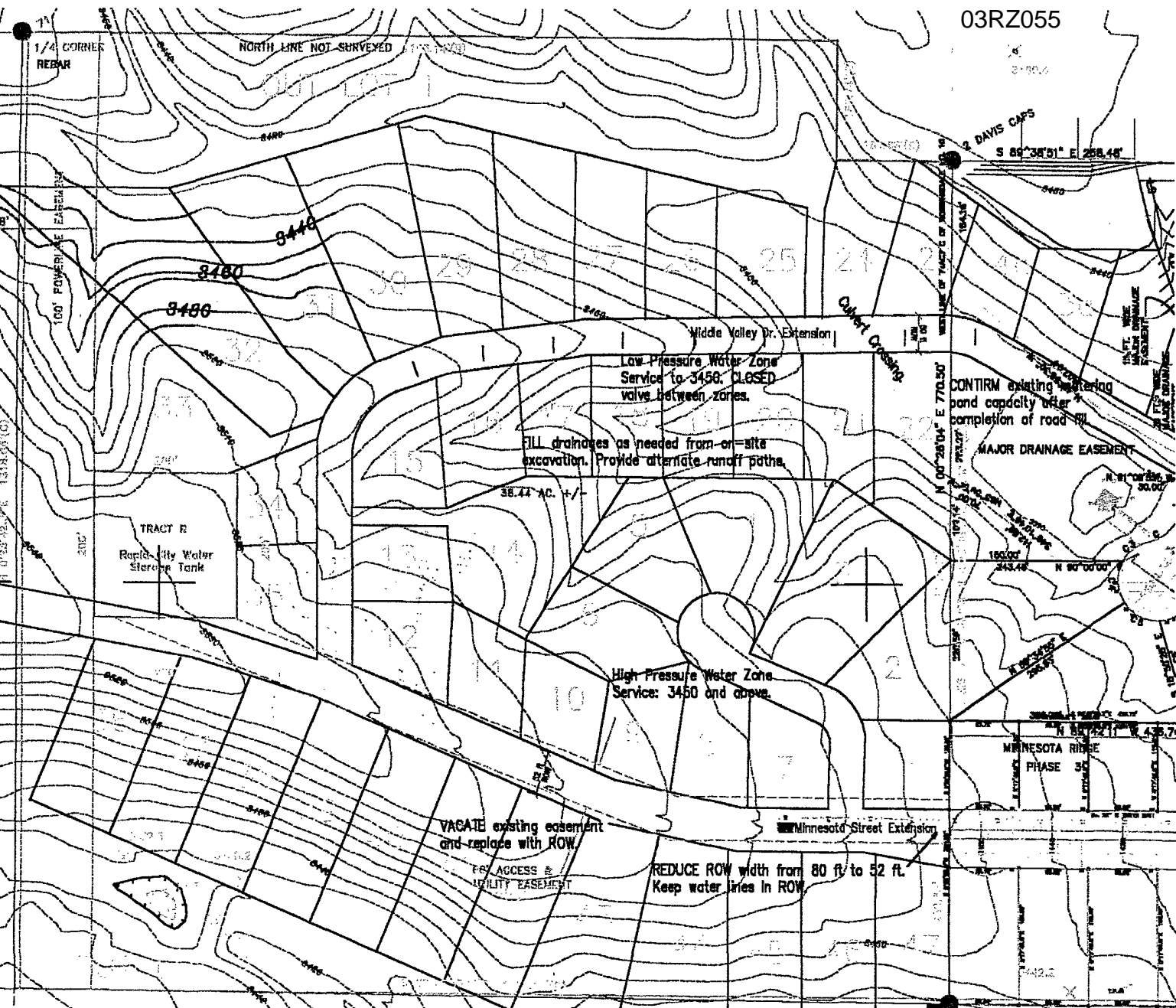
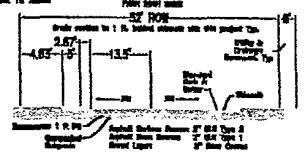


USE 1994 City of Royal City Standard Specifications and Details

Typical Street Section  
Middle Valley Extension, 24" or 30"



Typical Street Section  
Minnesota Street Extension



Low Pressure Water Zone  
Service to 3456. CLOSED  
valve between zones.

FILL drains as needed from on-site  
excavation. Provide alternate runoff paths.

CONFIRM existing watering  
pond capacity after  
completion of road fill

MAJOR DRAINAGE EASEMENT

High Pressure Water Zone  
Service: 3450 and above.

VACATE existing easement  
and replace with ROW

FRY ACCESS &  
UTILITY EASEMENT

REDUCE ROW width from 80 ft to 52 ft.  
Keep water lines in ROW

36.74 AC. +/-

TRACT B  
Rapid City Water  
Storage Tank

1/4 CORNER  
REBAR

NORTH LINE NOT SURVEYED

2 DAVIS CAPS

S 89°38'01" E 268.46'

Middle Valley Dr. Extension

Curbed Curbcut

N 00°28'04" E 770.50'

N 80°00'00" E 243.48'

N 80°00'00" E 180.00'

MINNESOTA RIDGE  
PHASE 35

Minnesota Street Extension