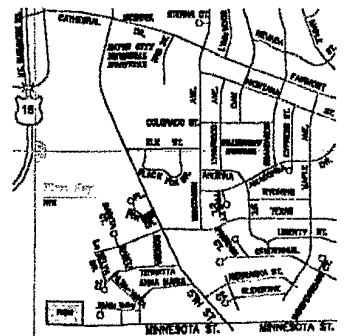


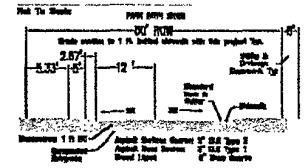


Scale: 1"=50'

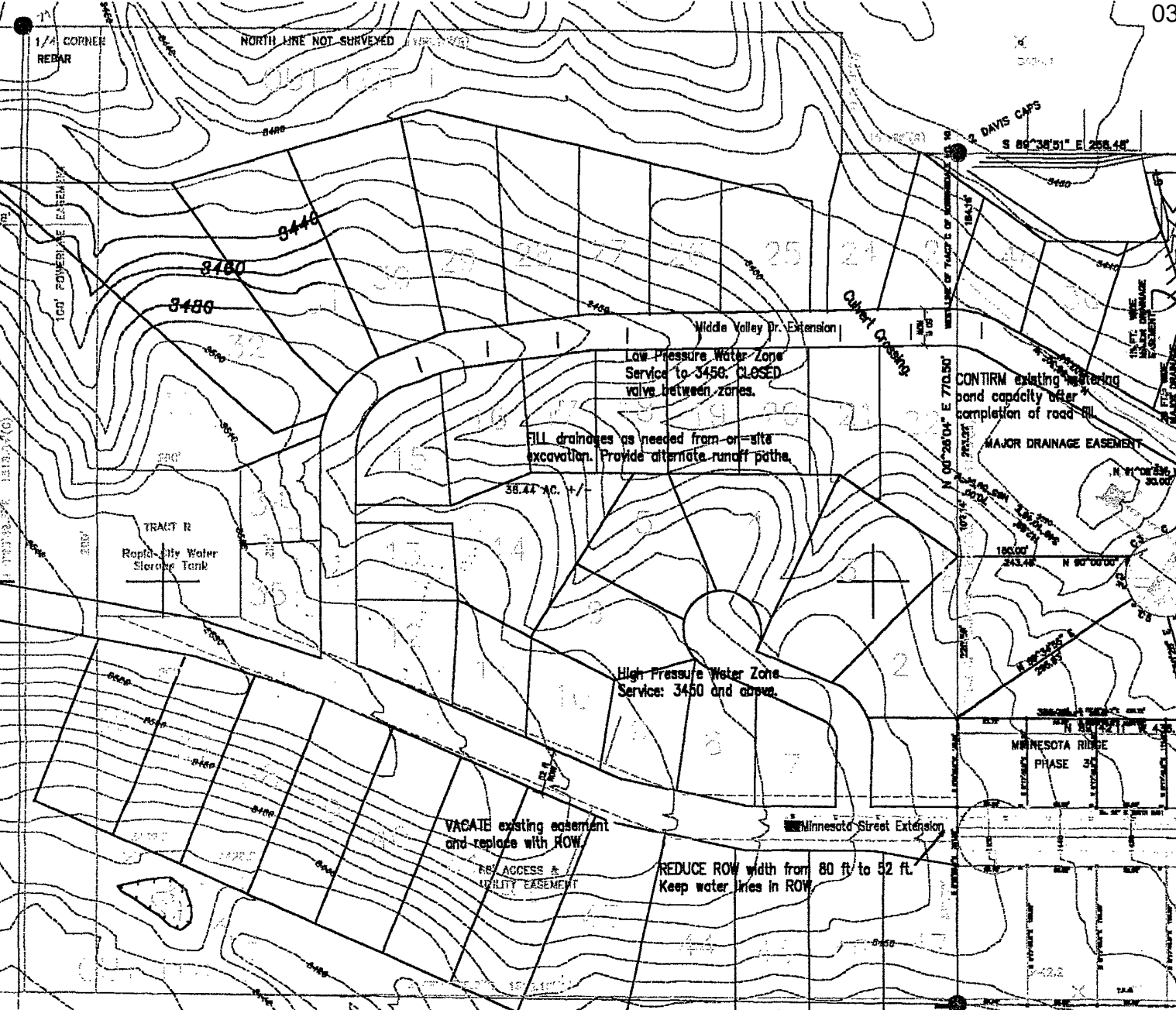
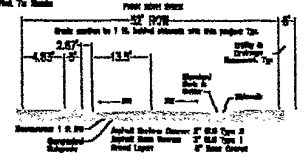


USE 1994 City of Royal City Standard Specifications and Details

Typical Street Section
Middle Valley Extension, 60' to 80'



Typical Street Section
Minnesota Street Extension



Low Pressure Water Zone Service to 3450. CLOSED valve between zones.

FILL drainages as needed from or site excavation. Provide alternate runoff paths.

CONFIRM existing metering band capacity before completion of road fill.

MAJOR DRAINAGE EASEMENT

High Pressure Water Zone Service: 3450 and above.

VACATE existing easement and replace with ROW

RE ACCESS & UTILITY EASEMENT

REDUCE ROW width from 80 ft to 52 ft. Keep water lines in ROW.

TRACT II
Rapid City Water Storage Tank

