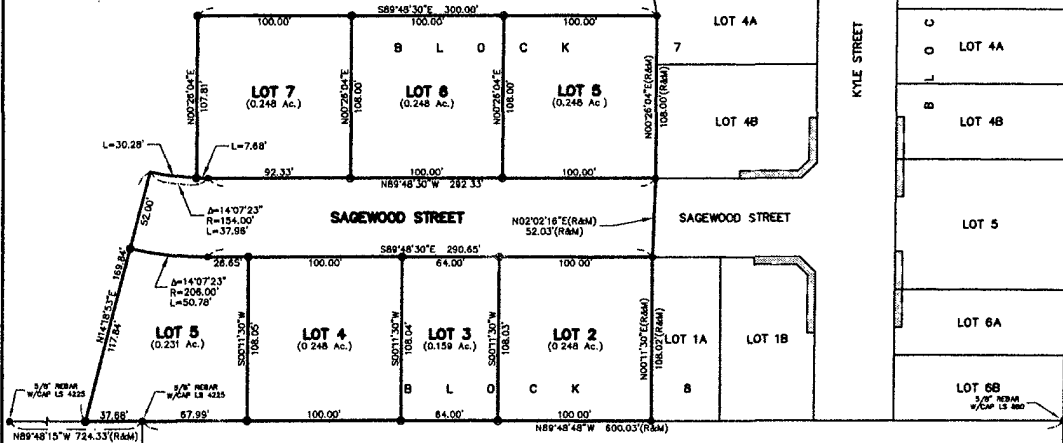
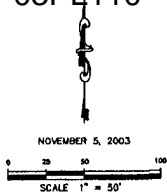


Plat of Lots 5 through 7 of Block 7 and Lots 2 through 5 of Block 8 all of CHMH Subdivision,
and Dedicated Public Right of Way shown as Sagewood Street

Prepared by:
FMG Engineering
3700 Sturgis Road
Rapid City, SD 57702
605/342-4105

All located in SW1/4 NW1/4 of Section 24, T2N, R7E, BHM,
Rapid City, Pennington County, South Dakota.

03PL110



LOT 1 OF
THE NEW PARK SUBDIVISION

RECEIVED