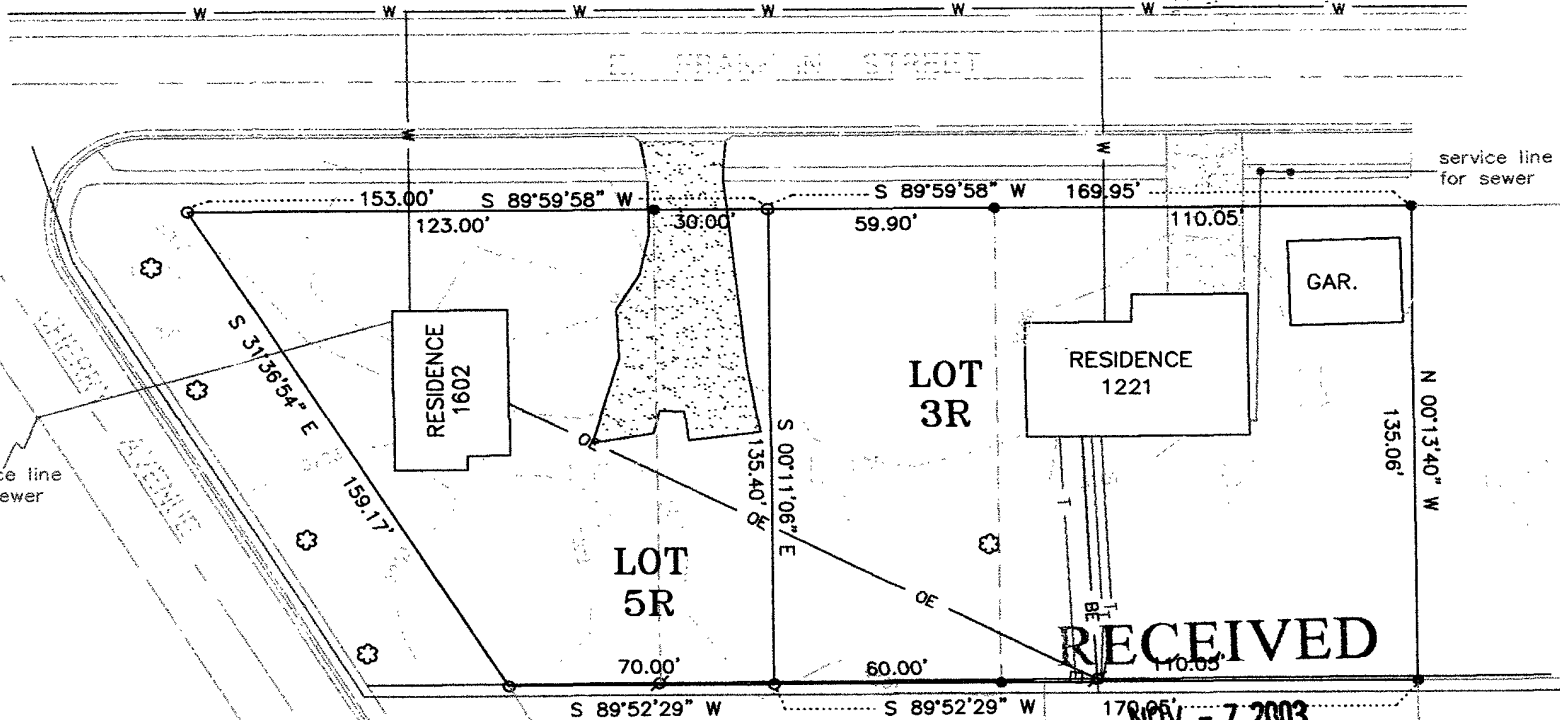


03PL108

STRUCTURE LOCATION SURVEY

LOT 3R AND LOT 5R (FORMERLY LOTS 3, 4 AND 5)
IN BLOCK 6 OF RADIO TOWERS ADDITION, TO THE CITY
OF RAPID CITY, PENNINGTON COUNTY, SOUTH DAKOTA.



CONTOUR INTERVAL = 1 FOOT

RECEIVED
NOV - 7 2003
Rapid City
Planning Department

PREPARED BY: **PRECISION SURVEYING & MAPPING, Inc.**

2030 JUNCTION AVE., PO BOX 66, STURGIS, SOUTH DAKOTA.
PHONE: 605-347-4014 FAX: 650-423-4110

Date: 10-27-03

Scale: 1" = 50 Feet

Drawn By: SEV