

03SR046



SURVEYOR'S NOTES

- ① Found near S1°17'31"E 2.84'. Not Accepted This Survey.
 - ② Found near S1°12'20"W 2.87'. Not Accepted This Survey.
- Utilities Shown are from Street Department and Utility Locates performed by South Dakota One Call. Ticket Number 02235604.
 Dimensions from City of Rapid City Department Historic (010V276).

LEGEND

- ⊕ Secondary Sewer Manhole
- ⊕ Secondary Sewer Manhole
- Secondary Sewer Service Line
- Secondary Sewer Service Line Cleanout
- Water Main
- Water Service Line
- Utility Pole
- Overhead Utility Line
- Electric Meter
- Electric Utility Vault
- Natural Gas Meter
- Natural Gas Line (underground)
- Telephone
- Point Survey Monument L.S. #108
- Point Survey Monument (one used)
- Set Marker with cap marked "RW FISK 0088"

Geodetic Coordinates for Tower Location

- ⓐ Latitude = 44°04'58.9117"N
- Longitude = 103°18'38.0047"W
- Elevation = 3385.0' (NGVD29)

Top of
 ○ Sign Elevation = 3418'

RECEIVED

OCT 24 2003

Rapid City
 Planning Department

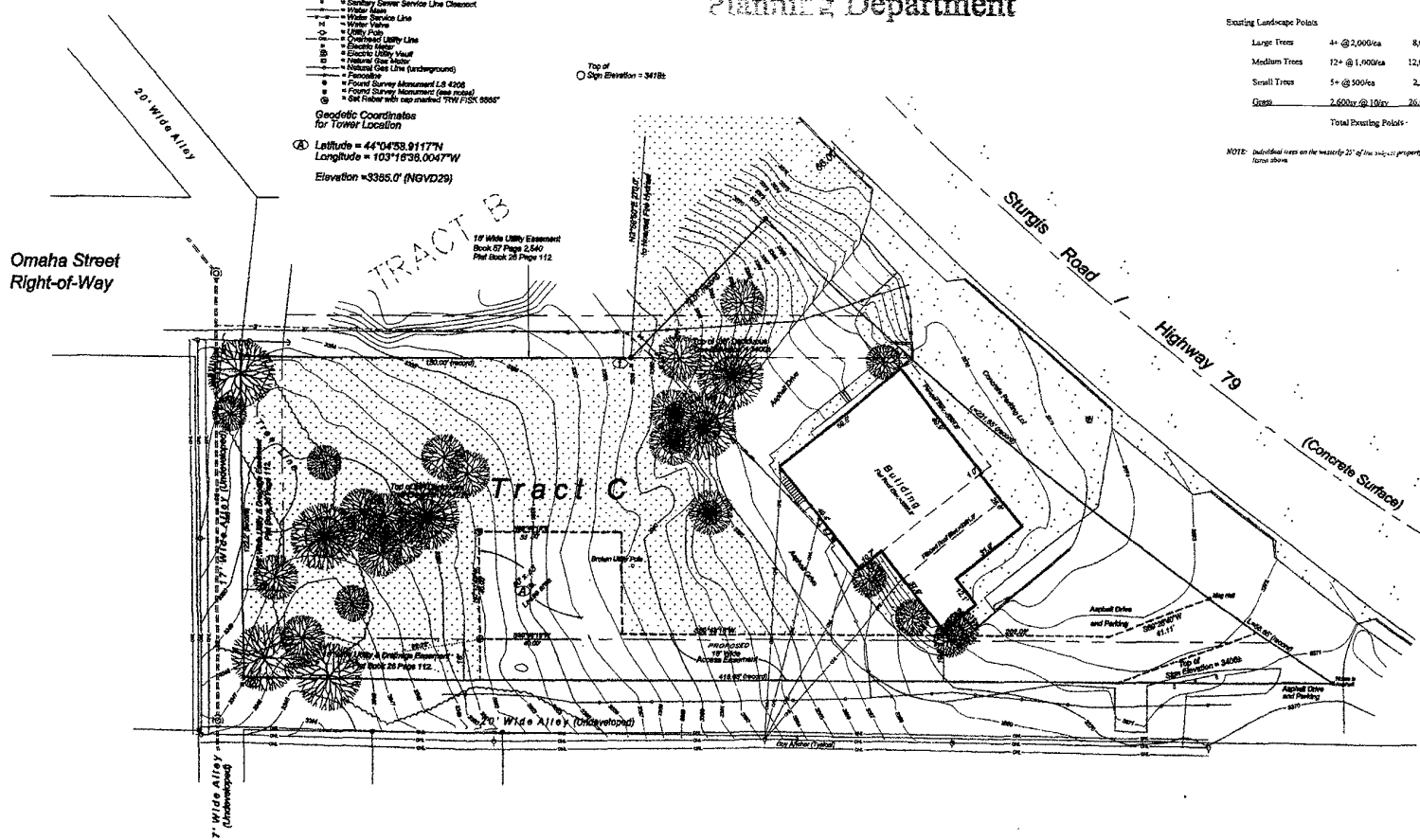
LANDSCAPE INFORMATION

Existing Site	43,960 sf
Existing Building	4,400
Proposed Buildings (245 sq and Towers (20ft)	365
Total Building Area	4,765
Trees Present Required	38,195

Existing Landscape Points

Large Trees	4+ @ 1,000/ea	8,000
Medium Trees	12+ @ 1,000/ea	12,000
Small Trees	5+ @ 500/ea	2,500
Grass	2,600sq @ 10sqy	26,000
Total Existing Points		48,500

NOTE: Individual trees on the history 22' of this site property are not shown or listed above.



SURVEYED BY: [Signature] DATE: 8/18/03
 DRAWN BY: [Signature] DATE: 8/18/03
 REVISIONS: [Table]
 CHECKED BY: [Signature]
FISK LAND SURVEYING
 AND CONSULTING ENGINEERS, INC.
 1000 MAIN STREET, P.O. BOX 8154
 RAPID CITY, SOUTH DAKOTA 57109
 (605) 342-5387 FAX (605) 342-1172

Topographic Map - Tract C of C.D. Rounds Subdivision
 Rapid City, Pennington County, South Dakota
 RCY - Canyon Lake Verizon/MegaCom

