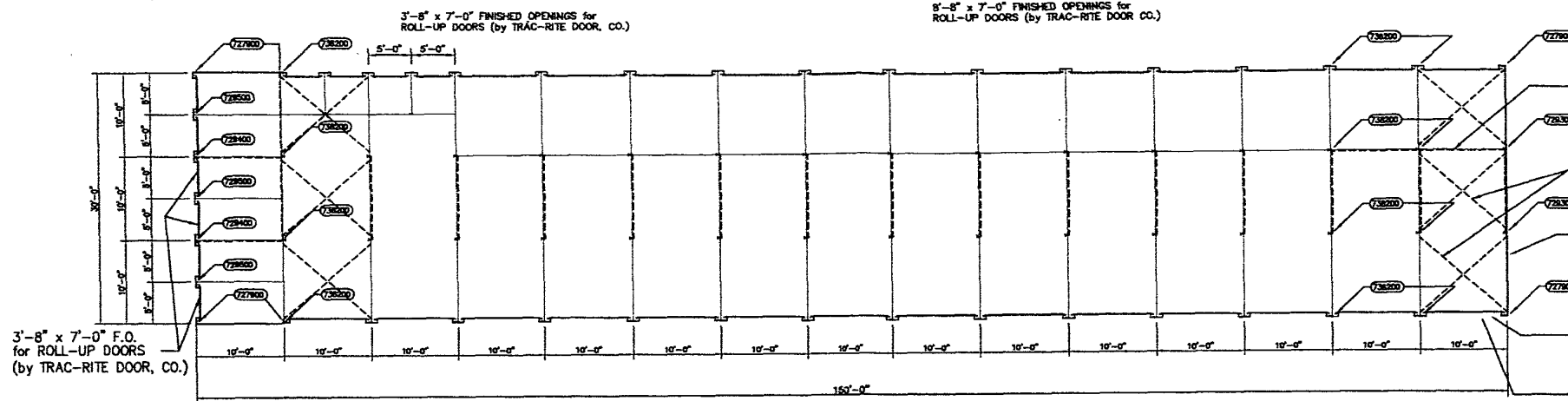


1914.ENG.11/02

03UR015

# Low-Profile 1/4":12" Pitch Self-Storage System Typical Building Plan



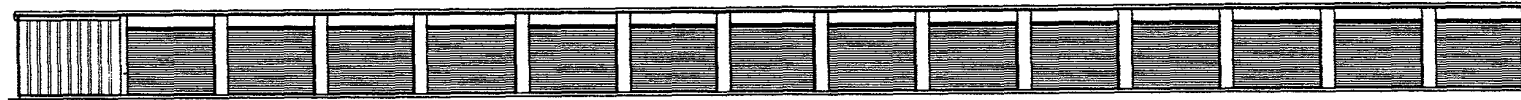
- 2" x 16ga. galv. STRAP WALL BRACING #779700 w/(1) 1/2" BOLT #764200 (1) END & (4) SCREWS, #760600, THE OTHER REQUIRED @ TWO LONGITUDINAL WALLS ON EACH END ALSO EVERY TRANSVERSE WALL @ CENTER OF BLDG.
  - 2" x 16ga. galv. STRAP ROOF BRACING #779800 FASTEN w/ (4) #12 x 3/4" S.D. SCREW (#760600) @ EACH END
  - 26ga. COLORED TBS "A" RIB WALL PANELS, #7585 (10) 36" COVERAGE x 8'-2 1/2" LONG PANELS
  - 8'-8" x 7'-0" FINISHED OPENINGS for ROLL-UP DOORS (by TRAC-RITE DOOR CO.)
- NOTE:  
START EACH END WITH A 5'-0" SPAN ANGLE #775011, CONTINUE WITH 10'-0" SPAN ANGLES #775010 AND END WITH A 5'-0" SPAN ANGLE #775011

FLOOR PLAN for 30' x 150' MINI-STORAGE BUILDING

1/8"=1'-0"

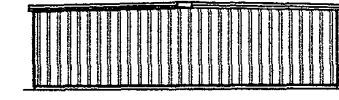


END WALL ELEVATION

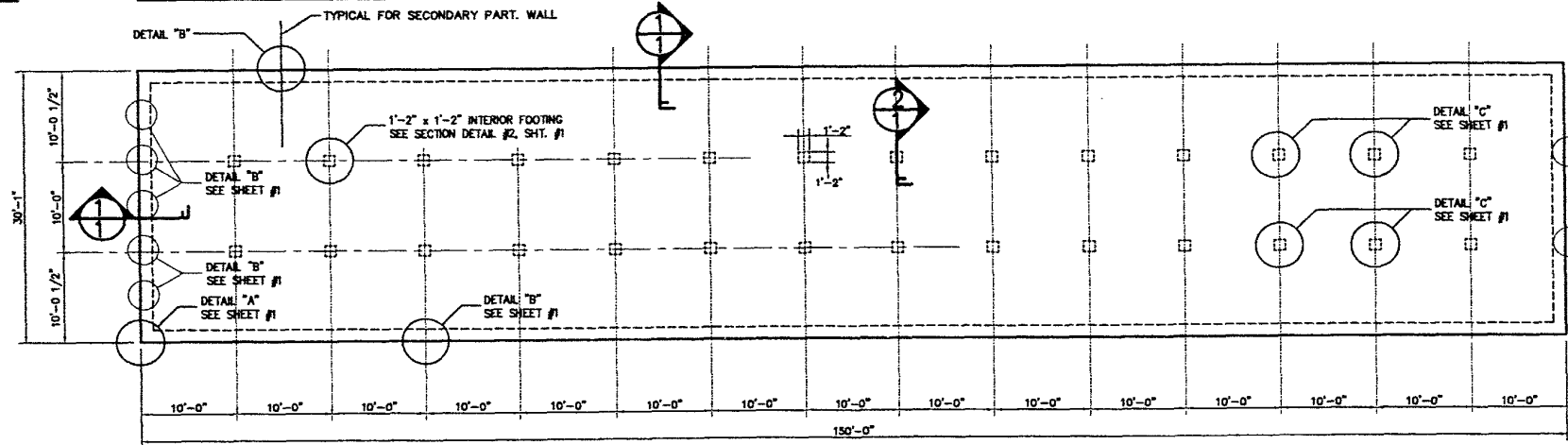


SIDE WALL ELEVATION

1/8"=1'-0"



END WALL ELEVATION



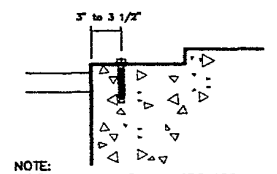
30'-1" x 150'-0" FOUNDATION PLAN for 30' x 150' MINI-STORAGE BUILDING

1/8"=1'-0"

NOTE:  
IF CONTROL JOINTS ARE CUT INTO THE SLAB THE CUTS MUST BE AT LEAST ONE FOOT OFF TBS'S 10' x 10' GRIDS.

NOTE:  
TRACHTE EXCLUDES ANY AND ALL PREPARATIONS INVOLVED IN PROVIDING SUITABLE CONCRETE PADS AND/OR FOUNDATIONS TO ACCEPT ERECTION OF TRACHTE MINI STORAGE BUILDING SYSTEMS. ALSO EXCLUDES ANY ANCHORS REQUIRED TO SECURE THE BUILDING TO THE FOUNDATION.

- INSTALLATION PROCEDURES FOR WEDGE-BOLT ANCHORS
1. USING THE PROPER DIAMETER WEDGE-BIT, DRILL A HOLE INTO THE BASE MATERIAL TO A DEPTH OF APPROX. 2" OR ONE ANCHOR DIAMETER DEEPER THAN THE EMBEDMENT REQUIRED. BE SURE TO USE A 10" WEDGE-BIT (#104176). BLOW THE HOLE CLEAN OF DUST AND OTHER MATERIAL. INSERT THE ANCHOR THROUGH THE FIXTURE INTO THE ANCHOR HOLE.
  2. BEGIN TIGHTENING THE ANCHOR BY APPLYING FORWARD PRESSURE WHEN ENGAGING THE FIRST FEW THREADS. CONTINUE TIGHTENING THE ANCHOR UNTIL THE HEAD IS FIRMLY SEATED AGAINST THE FIXTURE. IN EXTREMELY DENSE MATERIALS, USE OF AN IMPACT WRENCH IS RECOMMENDED.
  3. BE SURE THE ANCHOR IS AT THE REQUIRED EMBEDMENT DEPTH AND THAT THE MAXIMUM CLAMPING TORQUE HAS NOT BEEN EXCEEDED. THE INSTALLATION IS NOW COMPLETE.



NOTE:  
1/2" WEDGE-BOLT ANCHORS ARE RECOMMENDED IN LIEU OF CAST-IN PLACE ANCHOR BOLTS. USE WEDGE-BOLT 1/2" X 3" MINIMUM EMBEDMENT DEPTH OF 3" MINIMUM.

**RECEIVED**

EXPANSION ANCHOR DETAIL

SEP 26 2003

Rapid City  
Planning Department

### NOTES:

FOUNDATION MUST BE SQUARE AND LEVEL

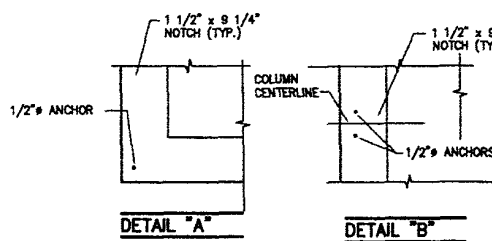
CONCRETE MUST BE OF MIXTURE AND DENSITY TO YIELD A 3000 PSI TEST AT 28 DAYS. FOUNDATION PLAN SHOWN IS FOR A PRESUMED 3000 PSF ALLOWABLE SOIL BEARING. PLEASE NOTIFY ENGINEER OF ANY UNUSUAL CONDITIONS.

REINFORCING STEEL: ASTM A615--GRADE 40. LAP ALL HORIZONTAL REINFORCING 12 INCHES MINIMUM AT SPLICES AND AROUND CORNERS.

WELDED WIRE FABRIC: ASTM A185. PLACE W.W.F. REINF. AT MID-DEPTH OF SLAB AND LAP 8" AT SIDE AND END LAPS.

FIBERMESH REINFORCED CONCRETE MAY BE USED IN PLACE OF THE WELDED WIRE FABRIC (THIS DOES NOT REPLACE THE REINFORCING BARS).

NOTE:  
NOTCH SHOULD BE LEVEL WITH NO PITCH



INTERIOR SUPPORT COLUMN FASTEN WITH (4) 3/8" x 1" BOLTS #760100 AND NUTS #760300

