



④ Latitude = 44°03'35.35419"N  
Longitude = 102°13'47.99616"W  
⑤ Latitude = 44°03'34.75687"N  
Longitude = 102°13'47.99487"W

Elevations shown are NGVD29

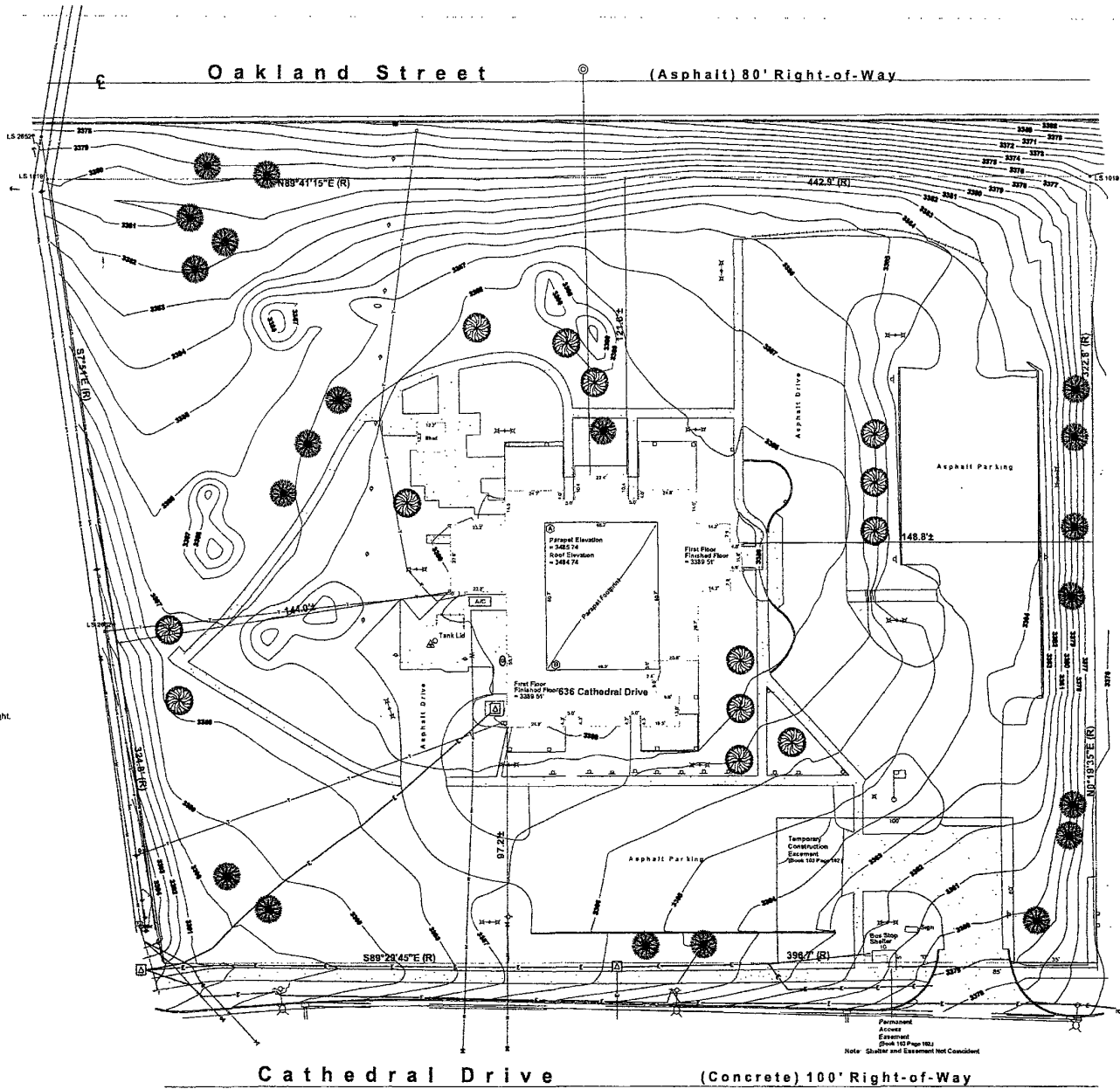
Utilities shown hereon are from visible appearances, utility locates (D) One Call, Trave No. 622 (800 326) and utility sketches provided by municipal authority.  
NOTE: No trees on this site exceed 25' in height

**Legend**

- ⊙ Sanitary Sewer Manhole
- Sanitary Sewer Service Line
- Storm Sewer Line
- Water Line
- M Water Valve
- △ Fire Hydrant
- ⊠ Electric Transformer
- ⊕ Electric Vault
- Electric Line (underground)
- Overhead Lines
- Utility Pole
- ⊙ Utility Pole Guy Anchor
- ⊠ Fiber Optic Vault
- ⊠ Telecommunications Pedestal
- Telecommunications Line (underground)
- ⊙ Natural Gas Meter
- ⊙ Natural Gas Valve
- ⊙ Natural Gas Line
- ⊙ Sign
- ⊕ Area Light
- Chain Link Fence
- ⊕ Guard Rail
- ⊠ Monitoring Well
- LS 2852 ⊕ Found survey monument as noted

**Easement Notes**

1. Right-of-way permit - Black Hills Power and Light. Misc. Book 38 Page 71. Route is not geometrically described.
2. Right-of-way permit - Black Hills Corporation Book 84 Page 1650. Route is not geometrically described.
3. Easement granted to City of Rapid City Book 103 Page 102. Easement as shown.



PROJECT No. 02-0140  
 1030 MAIN STREET, P.O. BOX 8154  
 RAPID CITY, SOUTH DAKOTA 57109  
 (605) 342-1238 FAX (605) 341-1172  
 SURVEYED BY: RWF DATE: 11/20/22 CHECKED BY: WF  
 DRAWN BY: RWF FISK LAND SURVEYING  
 AND CONSULTING ENGINEERS, INC.

Topographic Map - Tract A of Lot 2 located in the NW1/4 SW1/4 of Section 12, T1N, R7E, BHM, Rapid City, Pennington County, South Dakota Fisk Land Surveying  
 RCY - South Rapid City. Client: Verizon/MegaCom