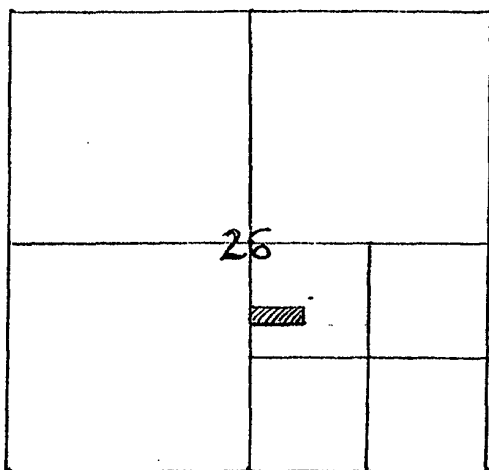




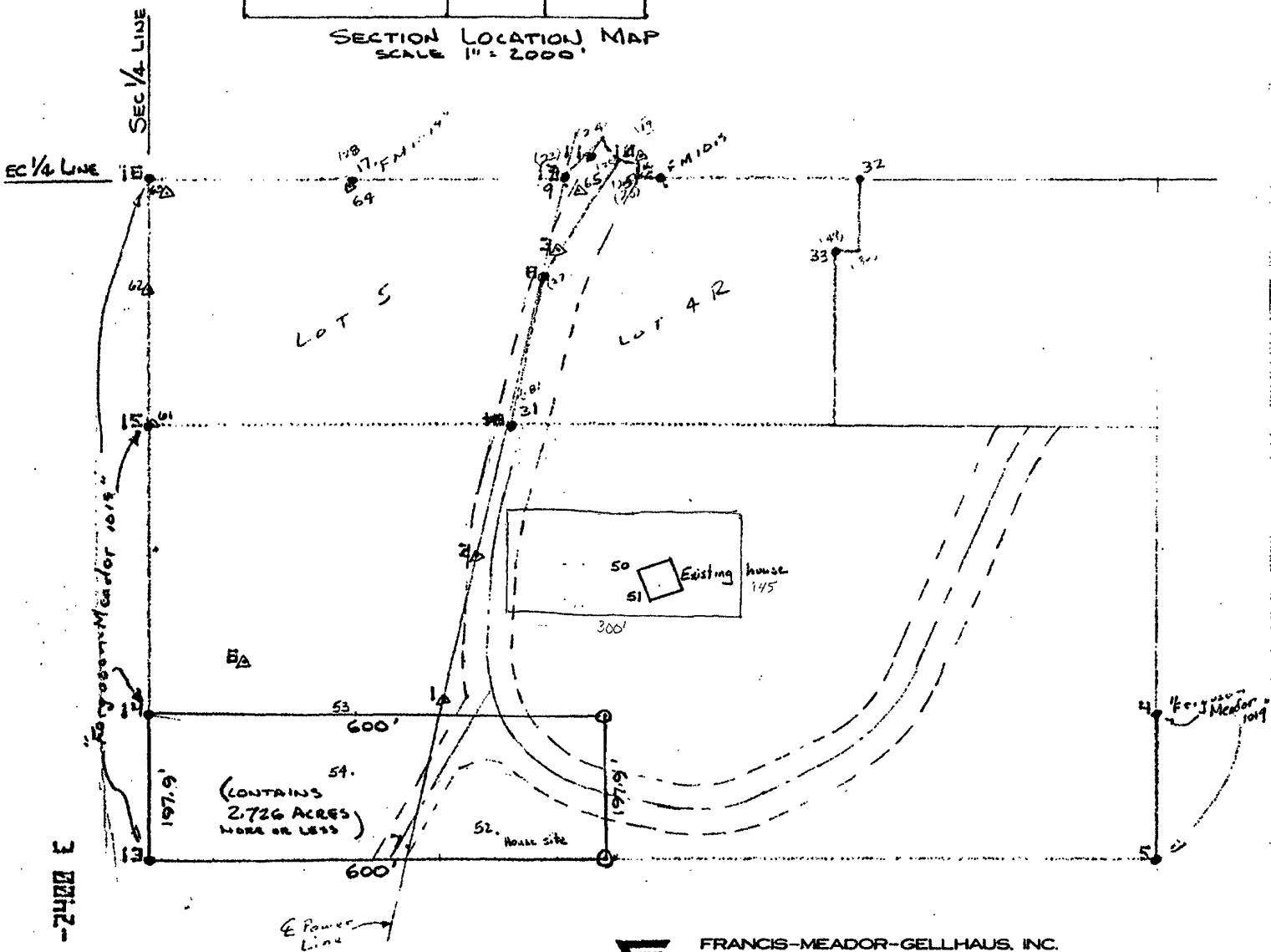
03PL103



SECTION LOCATION MAP
SCALE 1" = 2000'



SCALE 1" = 200'
OCT. 29, 1982



3 24h 2-



8 N



FRANCIS-MEADOR-GELLHAUS, INC.

RAPID CITY • OCT. 29, 1982

NW 1/4 OF SE 1/4 OF SEC. 26, T.2N., R.7E., B.H.M.
PENNINGTON COUNTY, SOUTH DAKOTA

