

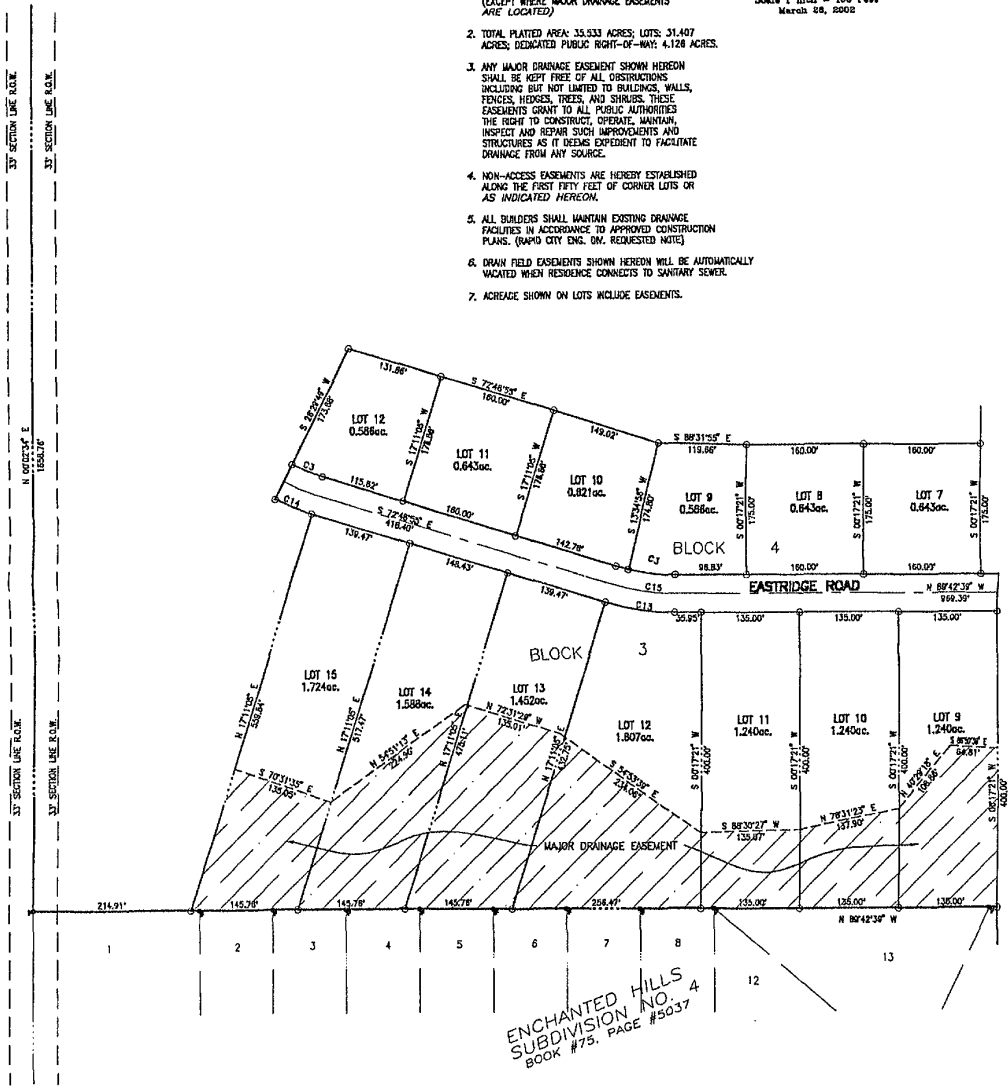
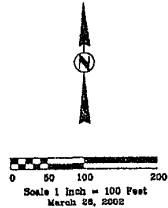
PLAT OF EASTRIDGE ESTATES SUBDIVISION  
 INCLUDING LOTS 1-6, BLOCK 1; LOTS 1, BLOCK 2; LOTS 1-15, BLOCK 3  
 LOTS 1-12, BLOCK 4 OF EASTRIDGE SUBDIVISION AND  
 DEDICATED ENHANCEMENT ROAD, EASTRIDGE DRIVE, AND MAJOR DRAINAGE EASEMENTS  
 LOCATED IN THE NW¼ OF SECTION 24, T1N, R7E, BHM  
 RAPID CITY, PENNINGTON COUNTY, SOUTH DAKOTA

NOTES:

- Denotes set 5/8" rebar with survey cap marked "ARLETH 3977".
- Denotes Found Survey Monument w/cap as noted.
- ▨▨▨ = DEDICATED EASEMENT
- ▨▨▨ = NON-ACCESS EASEMENT

NOTES:

1. MINOR DRAINAGE AND UTILITY EASEMENTS ARE HEREBY ESTABLISHED 6' WIDE ON THE INTERIOR SIDE OF ALL LOT LINES AND RIGHT-OF-WAY, (EXCEPT WHERE MAJOR DRAINAGE EASEMENTS ARE LOCATED).
2. TOTAL PLATED AREA: 35.533 ACRES; LOTS: 31.487 ACRES; DEDICATED PUBLIC RIGHT-OF-WAY: 4.128 ACRES.
3. ANY MAJOR DRAINAGE EASEMENT SHOWN HEREON SHALL BE KEPT FREE OF ALL OBSTRUCTIONS INCLUDING BUT NOT LIMITED TO BUILDINGS, WALLS, FENCES, HEDGES, TREES, AND SHRUBS. THESE EASEMENTS GRANT TO ALL PUBLIC AUTHORITIES THE RIGHT TO CONSTRUCT, OPERATE, MAINTAIN, INSPECT AND REPAIR SUCH IMPROVEMENTS AND STRUCTURES AS IT DEEMS EXPEDIENT TO FACILITATE DRAINAGE FROM ANY SOURCE.
4. NON-ACCESS EASEMENTS ARE HEREBY ESTABLISHED ALONG THE FIRST FIFTY FEET OF CORNER LOTS OR AS INDICATED HEREON.
5. ALL BUILDERS SHALL MAINTAIN EXISTING DRAINAGE FACILITIES IN ACCORDANCE TO APPROVED CONSTRUCTION PLANS. (RAPID CITY ENG. CO. REQUESTED NOTE)
6. DRAIN FIELD EASEMENTS SHOWN HEREON WILL BE AUTOMATICALLY VACATED WHEN RESIDENCE CONNECTS TO SANITARY SEWER.
7. ACREAGE SHOWN ON LOTS INCLUDE EASEMENTS.



ENCHANTED HILLS  
 SUBDIVISION NO. 4  
 BOOK #75, PAGE #5037

SHORT COURSE TABLE

NUMBER	DIRECTION	DISTANCE
1	N 145° 21' 00" E	162.30'
2	S 70° 51' 15" E	135.45'
3	N 171° 10' 00" E	508.84'
4	S 77° 46' 00" E	416.40'
5	N 171° 10' 00" E	172.80'
6	N 171° 10' 00" E	172.80'
7	N 171° 10' 00" E	172.80'
8	N 171° 10' 00" E	172.80'
9	N 171° 10' 00" E	172.80'
10	N 171° 10' 00" E	172.80'
11	N 171° 10' 00" E	172.80'
12	N 171° 10' 00" E	172.80'
13	N 171° 10' 00" E	172.80'

CURVE TABLE

NUMBER	RADIUS	DELTA ANGLE	ARC LENGTH	TANGENT	CHORD DIRECTION	CHORD LENGTH
1	172.80'	97.1874°	44.53'	22.27'	S 89° 33' 33" E	44.48'

P  
 R