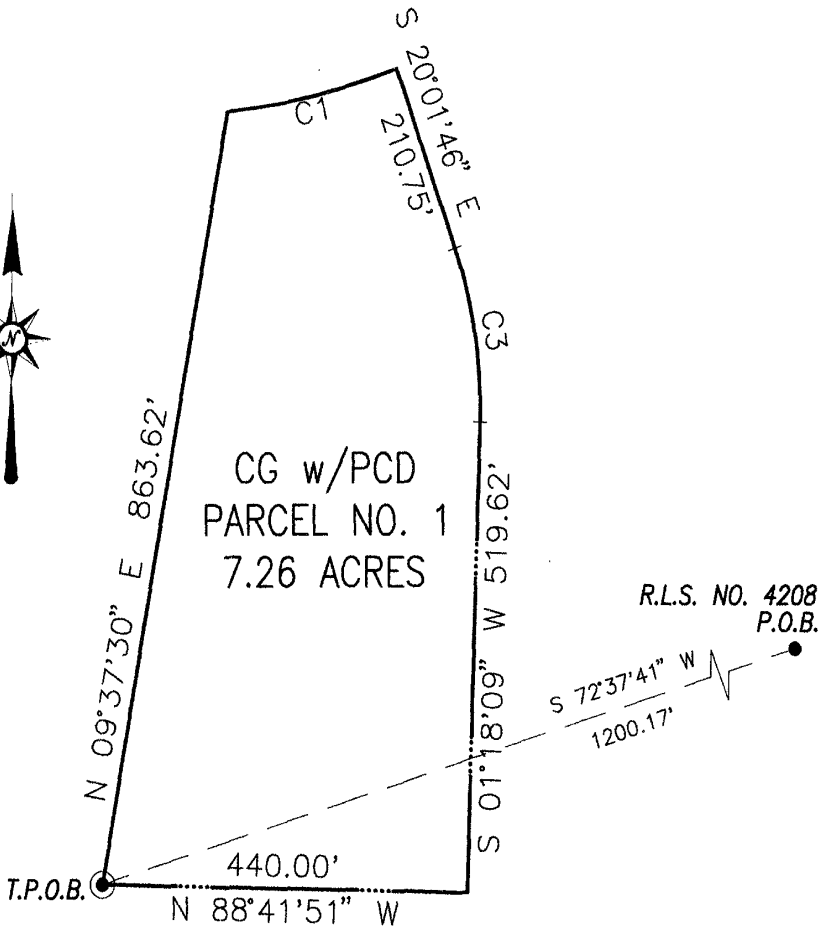


EXHIBIT A - PARCEL 1
 GC w/PCD
 03RZ039



CURVE	RADIUS	DELTA ANGLE	ARC LENGTH	CHORD BEARING	CHORD LENGTH
C1	893.51'	13°26'11"	209.54'	N 76°41'20" E	209.06'
C3	526.00'	21°19'55"	195.84'	S 09°21'48" E	194.71'



SCALE: 1" = 200' SEPTEMBER 2003
 REV.9/25/03 B.D.