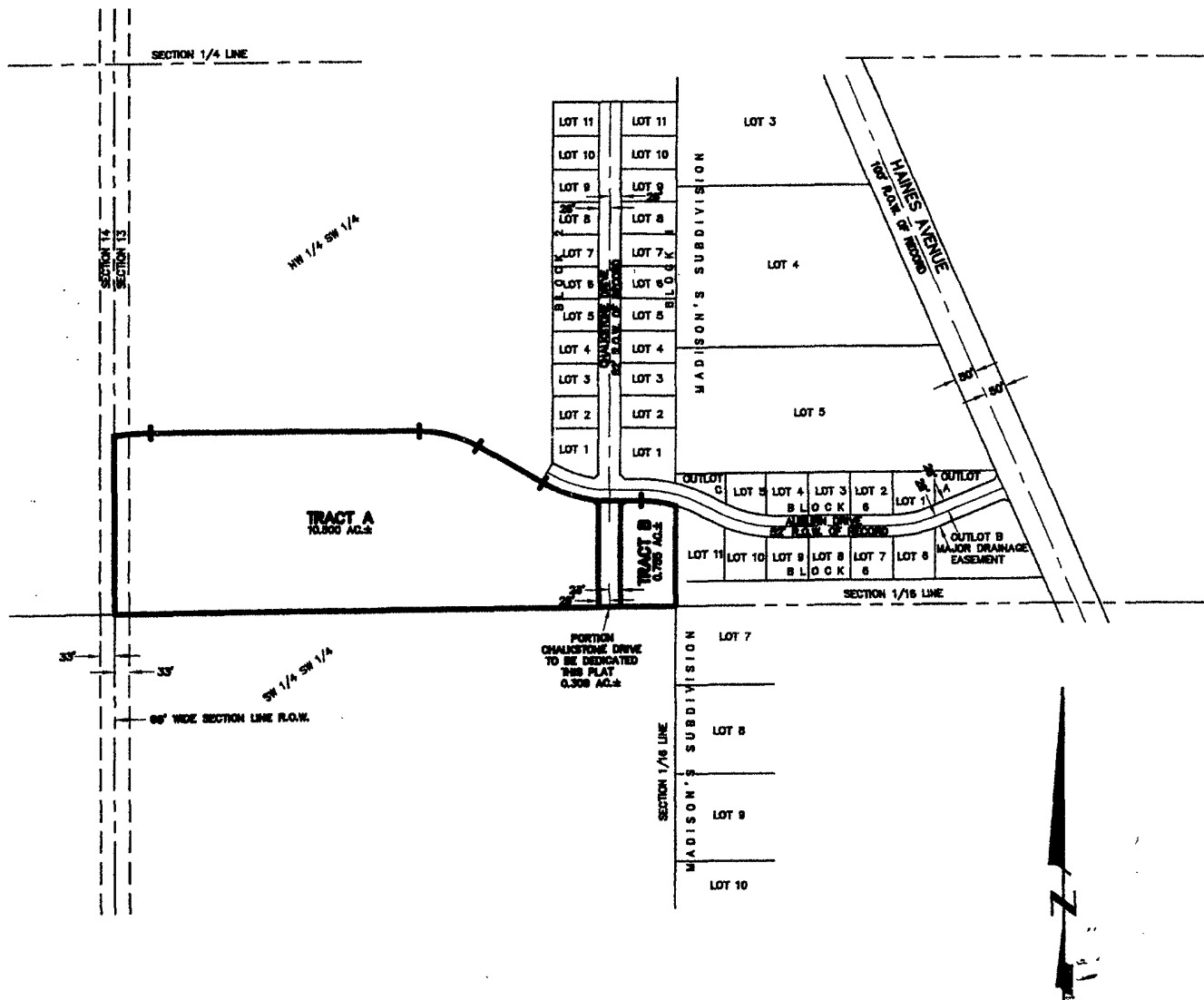


PLAT OF TRACTS A AND B, AUBURN HILLS SUBDIVISION

(formerly a portion of the NW 1/4 of the SW 1/4)
LOCATED IN THE NW1/4 OF SW1/4,
SECTION 13, T2N, R7E, BHM,
RAPID CITY, PENNINGTON COUNTY, SOUTH DAKOTA



AUGUST 28, 2003

N.T.S.