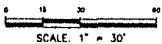
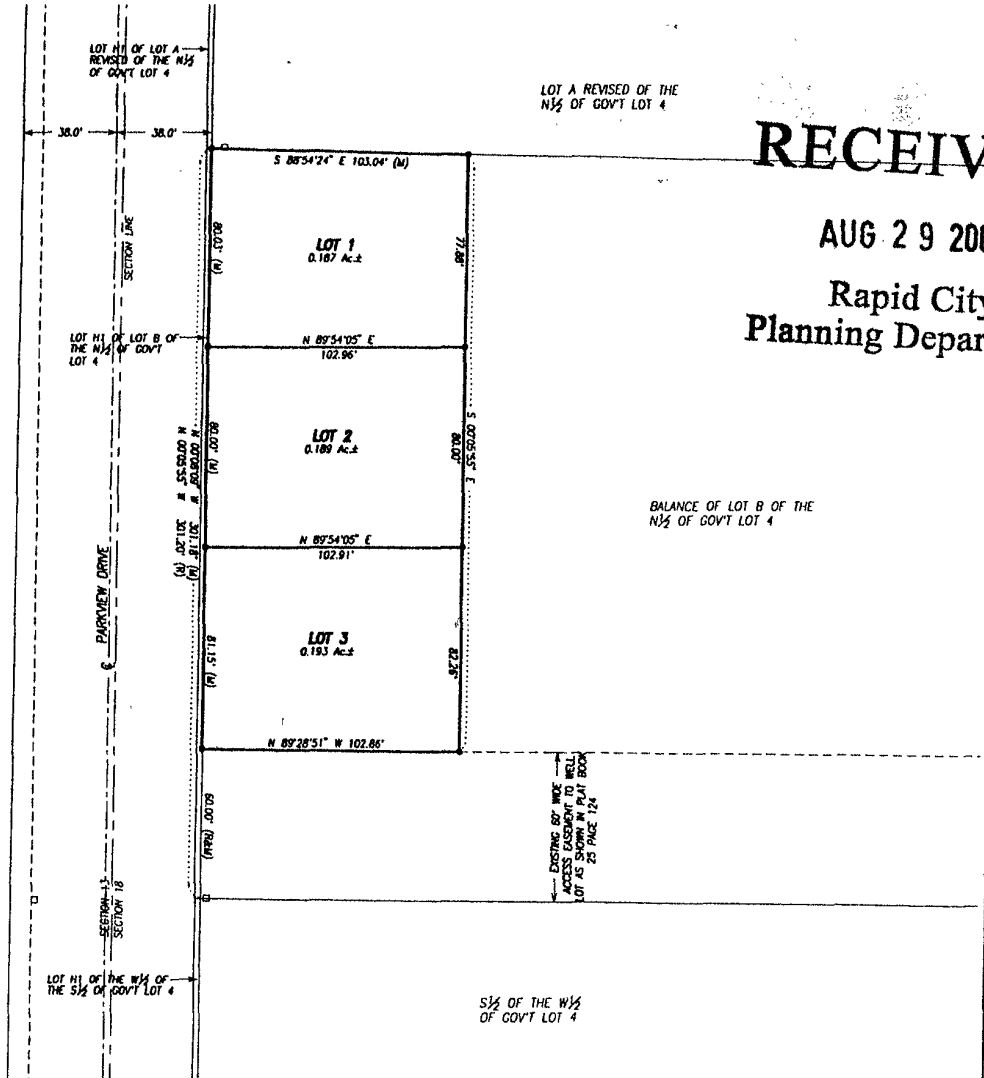


**PLAT OF LOTS 1, 2, & 3
OF CRAIG ESTATES**
(FORMERLY A PORTION OF LOT B OF THE N $\frac{1}{2}$ OF GOVERNMENT LOT 4)
LOCATED IN THE SW $\frac{1}{4}$ OF THE SW $\frac{1}{4}$
OF SECTION 18, T1N, R8E, B1M
RAPID CITY, PENNINGTON COUNTY, SOUTH DAKOTA

RECEIVED

AUG 29 2003

Rapid City Planning Department



LEGEND

- DENOTES SET 5/16" REBAR WITH SURVEY CAP MARKED "RLS 3977"
 - DENOTES FOUND SURVEY MONUMENT
- BASIS OF BEARING: AS SHOWN HEREON.

NOTES:

1. MINOR DRAINAGE AND UTILITY EASEMENTS ARE HEREBY ESTABLISHED 8" WIDE ON THE INTERIOR SIDE OF ALL LOT LINES AND RIGHT-OF-WAY. (EXCEPT WHERE MAJOR DRAINAGE EASEMENTS ARE LOCATED)
2. TOTAL PLATTED AREA: 0.569 ACRES
3. ANY MAJOR DRAINAGE EASEMENT SHOWN HEREON SHALL