

Mechanical specifications

Length	2450 mm	96.5 in
Width	295 mm	11.6 in
Depth	160 mm	6.3 in
Weight	14 kg	31.0 lbs
Wind area	0.73 m ²	7.8 ft ²
Wind load at 50m/s	1140 N	256 lbs

Mounting

Through two pair of clamps to pipe diameter Ø50-160 mm (2.0-6.3 in), or by U-clamps to a 2" pipe.

Antenna consisting of aluminum alloy with brass feedlines covered by a UV safe fiberglass radome.

Mounting Bracket #36210002
Downtilt Bracket #36114003

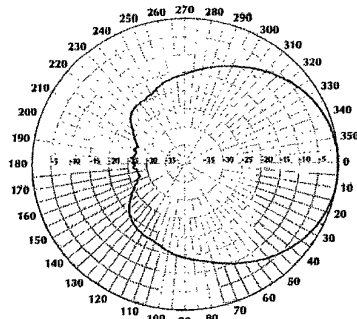
Electrical specifications

Frequency range	806-960 MHz
Impedance	50Ω
3) Connector	N, NE, DIN, E-DIN or EIA
1) VSWR	≤1.4:1
Polarization	Vertical
1) Gain	
RWA-80017	17 dBd
RWA-80017LS	16 dBd
2) Power rating	500 W
1) Half power angle	
H-plane	62°
E-plane	7°
1) Lobe tilt	
RWA-80017	1.25°
RWA-80017LS	0°
1) Null fill	5%
Lightning protection	Direct ground

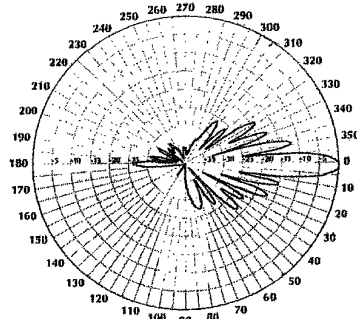
For a list of models, including electrical downtilt and/or null fill combinations, see page 139.

- Typical values.
- Power Rating limited by connector only.
- NE indicates an elongated N Connector.
E-DIN indicates an elongated DIN Connector.
EIA indicates a 7/8" EIA Flange.

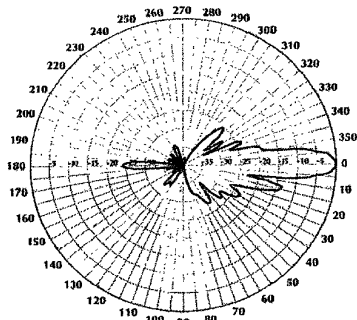
Improvements to mechanical and/or electrical performance of the antenna may be made without notice.

RWA-80017, RWA-80017LS**Radiation-pattern**
(at mid-band)

Horizontal



RWA-80017 Vertical



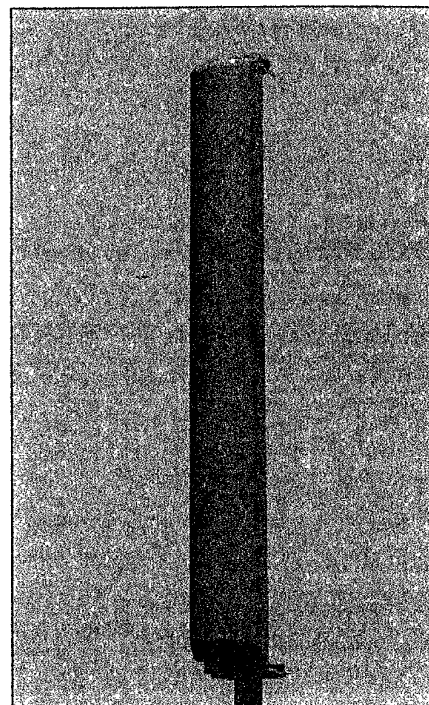
RWA-80017LS Vertical

RWA-80017LS

specialy designed for enhanced upper side lobe suppression.

Radiation patterns for all Antel antennas are measured with the antenna mounted on a fiberglass pole.

Mounting on a metal pole will typically improve the Front-to-Back Ratio.



Antel's Exclusive 3T
(True Transmission
Line Technology)
Antenna Design:

- A 1 1/4" four-channel extrusion running the entire length of the antenna for unmatched strength and rigidity.
- Durable brass feedline design that eliminates the need for solder joints in the signal path.
- A non-collinear system with access to every radiating element for broad band width and superior performance.
- Air as insulation for virtually no internal signal loss.

Every Antel antenna is under a five-year limited warranty for repair or replacement.

Antenna can be ordered with bottom-fed or center-fed connector. For center-fed connector, order model number RWA-80017CF + connector or RWA-80017LSCF + connector (N, NE, DIN, E-DIN).

Example: RWA-80017LSCF E-DIN