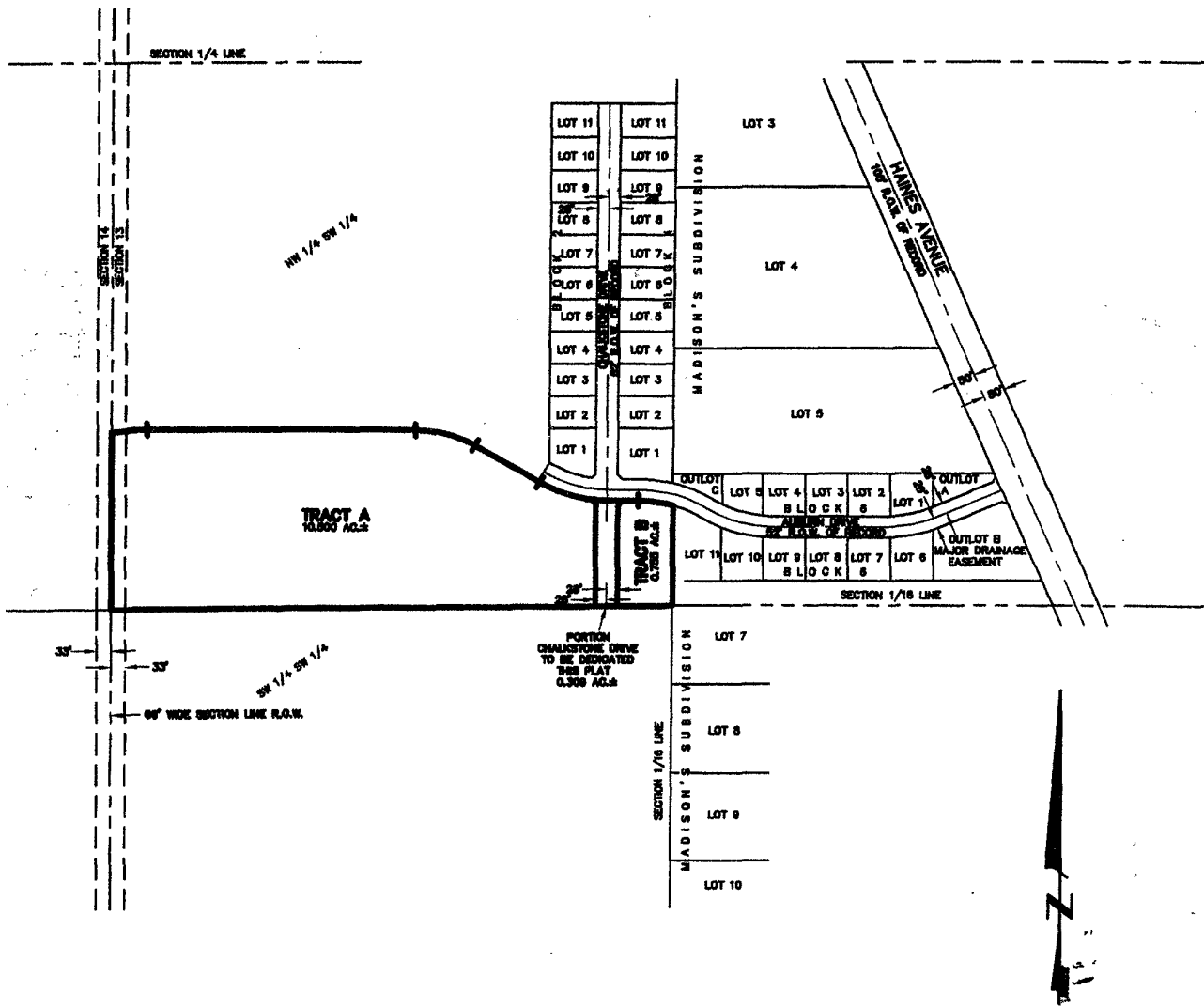


PLAT OF
TRACTS A AND B,
AUBURN HILLS SUBDIVISION
 (formerly a portion of the NW 1/4 of the SW 1/4)
 LOCATED IN THE NW1/4 OF SW1/4,
 SECTION 13, T2N, R7E, BHM,
 RAPID CITY, PENNINGTON COUNTY, SOUTH DAKOTA



AUGUST 28, 2003
 N.T.S.



Renner & Sperlich Engineering Co.

616 Sixth St. * Rapid City, SD 57701 * 605/342-1191
 FAX: 605/342-1405 * E-MAIL: RSEC@RAPIDNET.COM