

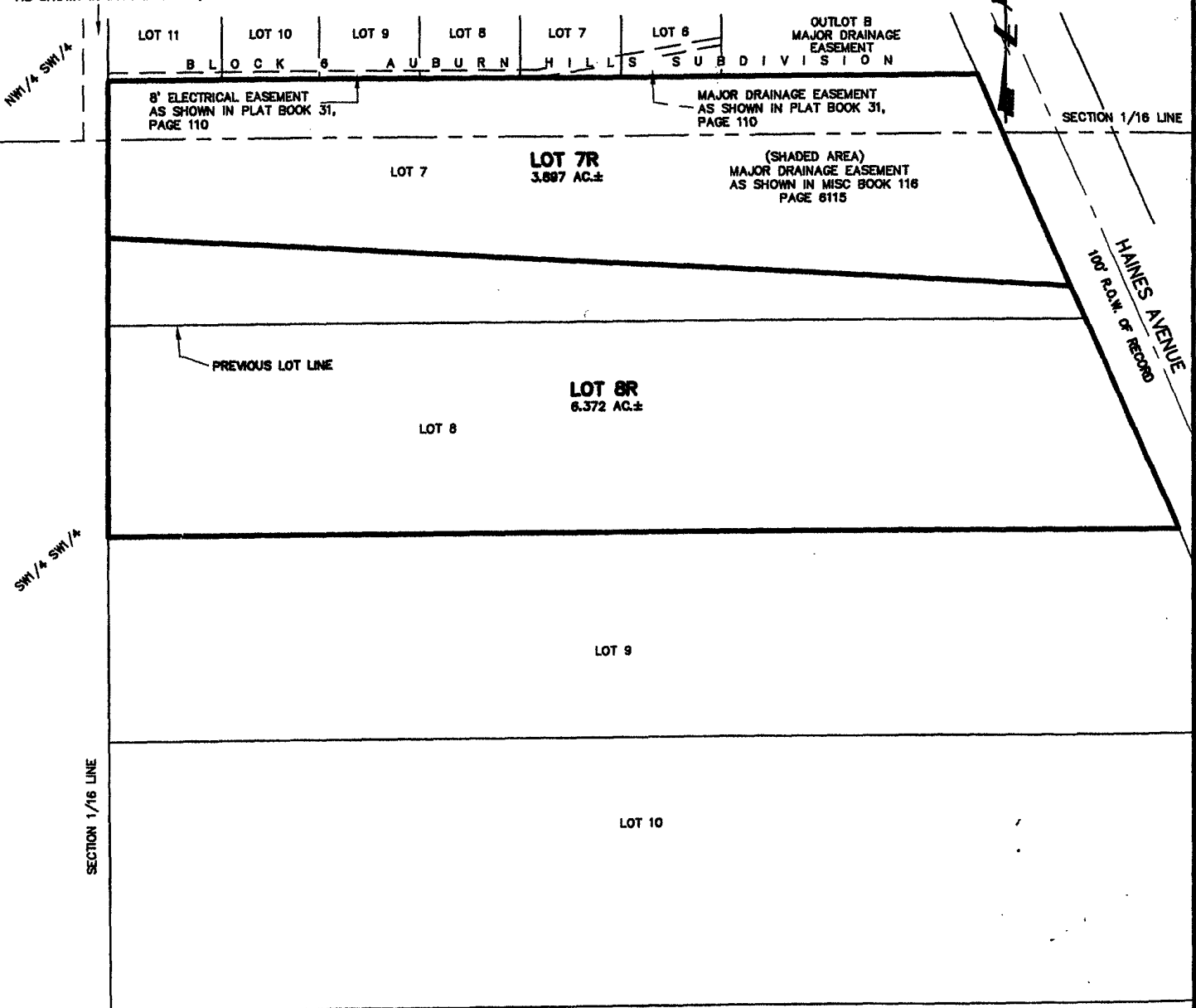
03SV031

PLAT OF
LOT 7R AND 8R,
MADISON'S SUBDIVISION
 (formerly Lot 7 and Lot 8 of Madison's Subdivision)
 LOCATED IN E1/2 OF SW1/4,
 SECTION 13, T2N, R7E, BHM
 RAPID CITY, PENNINGTON COUNTY, SOUTH DAKOTA

N.T.S.

August 5, 2003

WEST RIVER ELEC. ASSOCIATION
 25' RIGHT-OF-WAY EASEMENT
 AS SHOWN IN MISC BOOK 42, PAGE 441



Renner & Sperlich Engineering Co.

616 Sixth St. * Rapid City, SD 57701 * 605/342-1191
 FAX: 605/342-1405 * E-MAIL: RSEC@RAPIDNET.COM