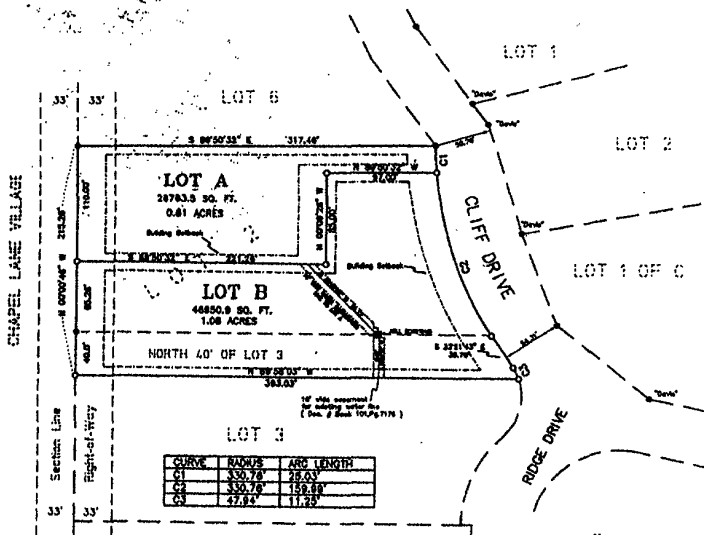


03PL074

## SURVEY PLAT OF

Lot A and Lot B of Block B, Canyon Lake Heights Subdivision,  
Formerly Lot 2 and the North 40' of Lot 3 in block B of Canyon Lake Heights  
Subdivision, Located in the NW1/4 of Section 16, T.1N., R.7E., B.H.M., Rapid City,  
Pennington County, South Dakota.



## LEGEND

- Set 5/8" Rebar with Cap marked "Voshnetz 7719"
- Found 5/8" Rebar Unless otherwise noted.

## COUNTY TREASURER'S CERTIFICATE

I, Treasurer of Pennington County, South Dakota, do hereby certify that all taxes which are due upon the land described herein, as shown by the records of my office, are fully paid.

Dated this \_\_\_\_\_ day of \_\_\_\_\_, 20\_\_\_\_



1" = 80 Feet

SURVEYOR'S NOTES