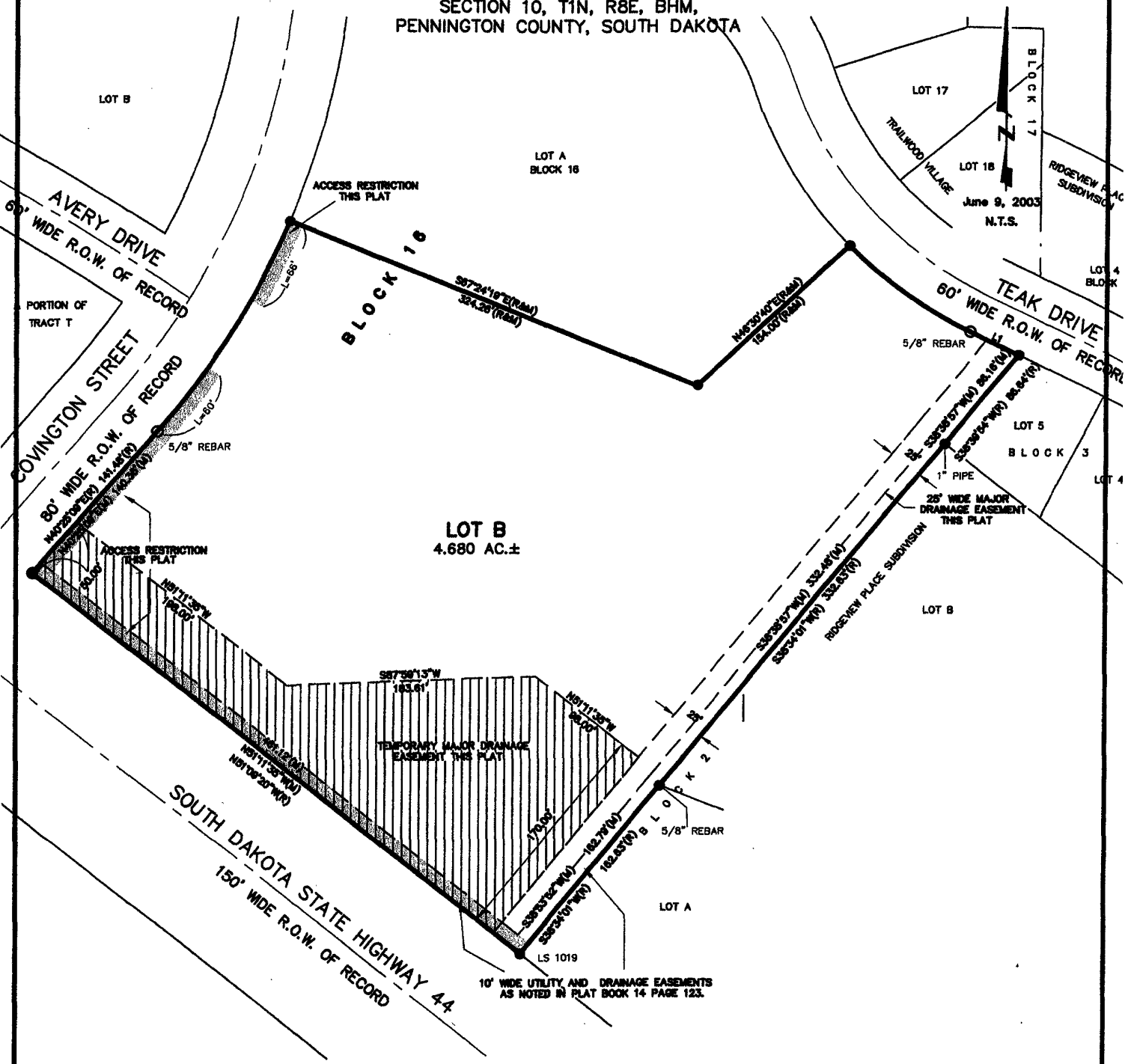


03PL070

PLAT OF LOT B OF BLOCK 16, TRAILWOOD VILLAGE

(formerly a portion of Tract T of Trailwood Village)
LOCATED IN SE1/4 OF SW1/4,
SECTION 10, T1N, R8E, BHM,
PENNINGTON COUNTY, SOUTH DAKOTA



Renner & Sperlich Engineering Co.

616 Sixth St. * Rapid City, SD 57701 * 605/342-1191
FAX: 605/342-1405 * E-MAIL: RSEC@RAPIDNET.COM