

PHASE I SITE PROJECT DATA:
PHASE II - 0.276 ACRES
 MAXIMUM BUILDING HEIGHT - 17'-6"
 LOT AREA USAGE
 TOTAL LOT AREA - 263,141 SF. (6.104 ACRES)
 IMPERVIOUS SURFACES:
 BUILDING AREA - 87,515
 PAVING AREA - 63,236
 SIDEWALK AREA - 22,886
 TOTAL IMPERVIOUS SURFACE - 174,637 SF.
 LANDSCAPE AREA - 178,504 SF.
 LOT DENSITY:
 72 DWELLING UNITS - 8.88 DUS/ACRE
 42 2 BR.
 30 3 BR.

PARKING PROVIDED:
 ATTACHED GARAGE SPACES +42
 SEMI-ATTACHED GARAGE SPACES +10
 TOTAL GARAGE SPACES +52
 ASSIGNED SURFACE SPACES +82
 UNASSIGNED SURFACE SPACES +82
 TOTAL SURFACE SPACES +202 (6 ACCESSIBLE)
 TOTAL PARKING SPACES PROVIDED +202 (6 ACCESSIBLE)

READY ARCHITECTURAL ASSOCIATES, INC.
 11606 Wayzata Blvd.
 Minneapolis, Minnesota
 (952)979-9231 Fax: (952)532-9914

I HEREBY CERTIFY THAT THE PLAN SPECIFIC TO THIS PROJECT WAS PREPARED BY ME OR UNDER MY DIRECT SUPERVISION AND THAT I AM A DULY LICENSED ARCHITECT UNDER THE LAWS OF THE STATE OF MINNESOTA.

ROBERT W. READY, AIA, AIA, AIA, AIA, AIA
 DATE: _____ REG. NO. 004

DEVELOPER

GANDOLF GROUP, L.L.C.
 8465 Wayzata Blvd., Suite 220
 Minneapolis, MN 55426

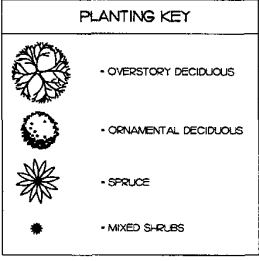
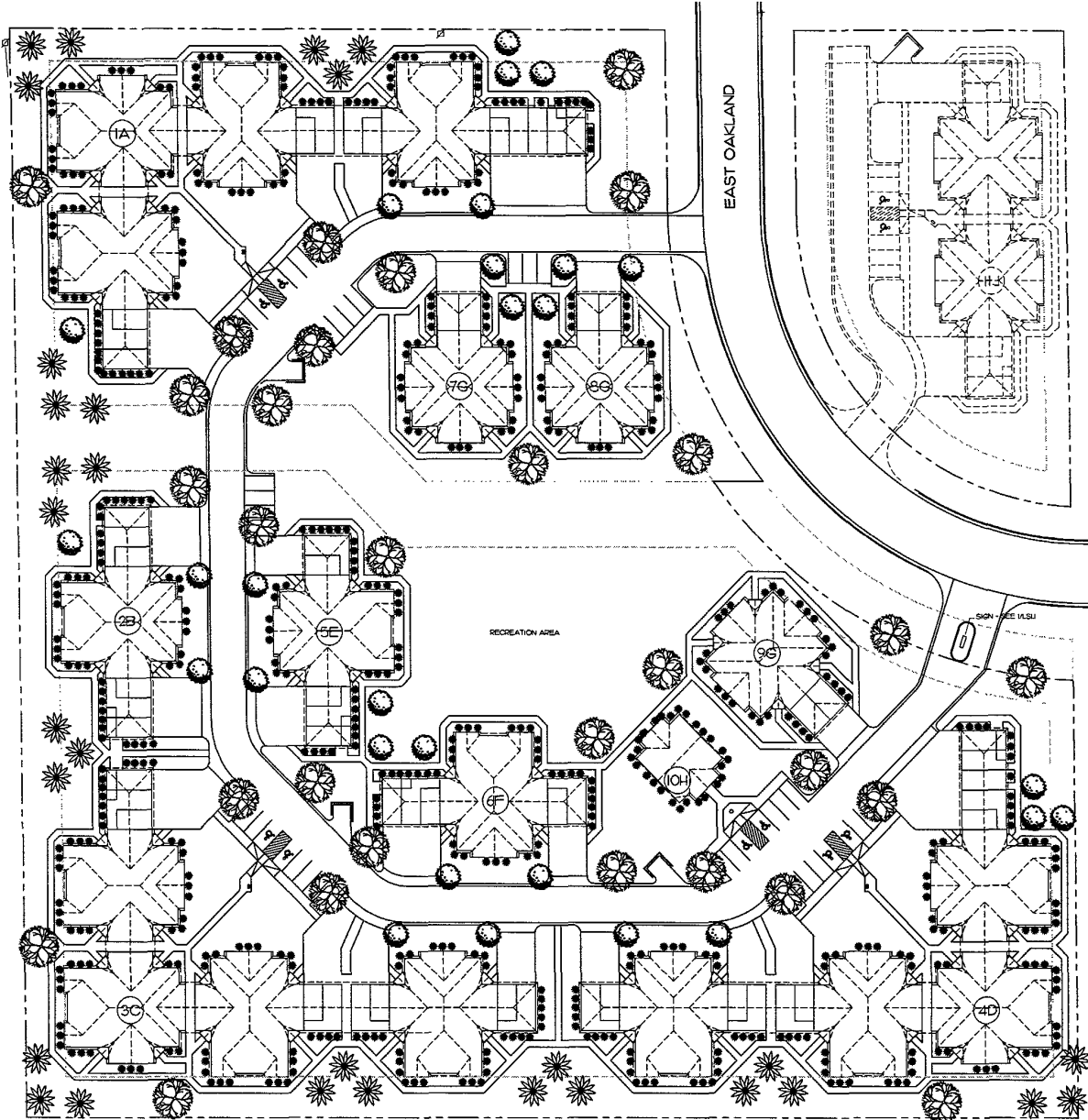
PROJECT NAME
SOUTH CREEK VILLAGE
 RAPID CITY, S.D.

PROJECT NO.	0202	
DATE	5/6/03	
DRAWN BY	KEN DRAPET	
CHECKED BY	REARDY	
FILE NO.	0202 - ALLOW	
PLOT DATE	5/28/03	
REVISION		
REV #	DATE	BY
△		
△		
△		
△		

COPYRIGHT 2003 © BY
 READY ARCHITECTURAL ASSOCIATES, INC.

SHEET SCALE
 1" = 30'
 SHEET TITLE
 SITE PLAN
 SHEET NUMBER
 A.I.I

GRAPHICS KEY:
 G - GARAGE
 M - PROJECT MAINTENANCE GARAGE
 S - PROJECT STORAGE GARAGE
 R - REFUSE CONTAINER AREA
 E - ELECTRIC METER PACK
 W - WATER METER
 ♿ - ACCESSIBLE DWELLING UNIT



READY ARCHITECTURAL ASSOCIATES, INC.
 11606 Wayzata Blvd.
 Minneapolis, Minnesota 55305
 (952)979-9231 fax: (952)352-9914

I HEREBY CERTIFY THAT THIS PLAN, SPECIFICATIONS OR PERMIT WAS PREPARED BY ME OR UNDER MY DIRECT SUPERVISION AND THAT I AM A DULY LICENSED ARCHITECT UNDER THE LAWS OF THE STATE OF MINNESOTA.

ROBERT H. READY, AIA, AIA, AIA, AIA, AIA, AIA
 DATE: _____ REG. NO. _____

DEVELOPER

GANDOLF GROUP, L.L.C.
 2465 Wayzata Blvd., Suite 320
 Minneapolis, MN 55426

PROJECT NAME
SOUTH CREEK VILLAGE
 RAPID CITY, S.D.

PROJECT NO. 0202
 DATE: 3/4/03
 DRAWN BY: H2K/DRAFT
 CHECKED BY: RREADY
 FILE NO. 000013/LSI/PLG
 PLOT DATE: 2/25/03
 REVISIONS:

REV #	DATE	BY
△		
△		
△		
△		

© COPYRIGHT 2003, © BY
 READY ARCHITECTURAL ASSOCIATES, INC.

SHEET SCALE
 1" = 30'
 SHEET TITLE
LANDSCAPING PLAN

SHEET NUMBER
 LSI.1