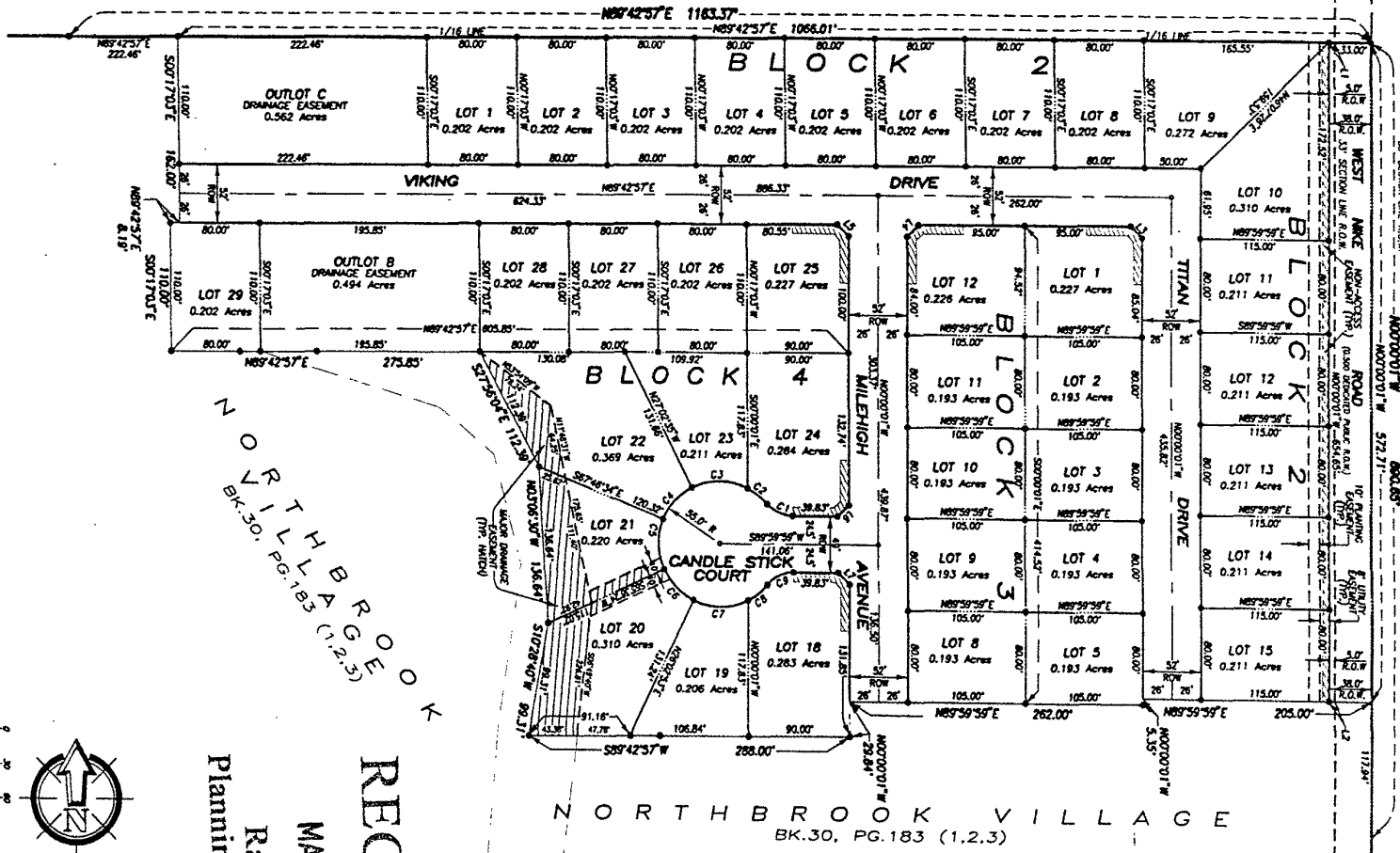


Prepared for:
Drew Design International, Inc.
528 Kansas City Street, Suite 4
Rapid City, SD 57701
605/346-0530

PLAT OF NORTHBROOK VILLAGE

LOTS 1-15 & OUTLOT C, BLOCK 2;
LOTS 1-5 & LOTS 8-12, BLOCK 3;
LOTS 18-29 & OUTLOT B, BLOCK 4
LOCATED IN THE SE1/4 OF SECTION 13, T2N, R7E, B1M
RAPID CITY, PENNINGTON COUNTY, SOUTH DAKOTA



N O R T H B R O O K
V I L L A G E
B K . 3 0 , P G . 1 8 3 (1 , 2 , 3)

N O R T H B R O O K V I L L A G E
B K . 3 0 , P G . 1 8 3 (1 , 2 , 3)

RECEIVED
MAY 22 2003
Rapid City
Planning Department

PREPARED BY:
ARLETH &
ASSOCIATES

582 MAIN STREET
RAPID CITY, SD 57702
605-378-1837

JOB NO.
03-0012

DATE: 5/19/03
SCALE: 1" = 60'
DRAWN: BD

APPROVED:
DWC: NB-PLAT-PH3.DWG

May 21, 2003 10:10 am
Drawing: NB-PLAT-PH3.DWG (C:\JOB-PROJECTS\NB-PLAT-PH3)

