

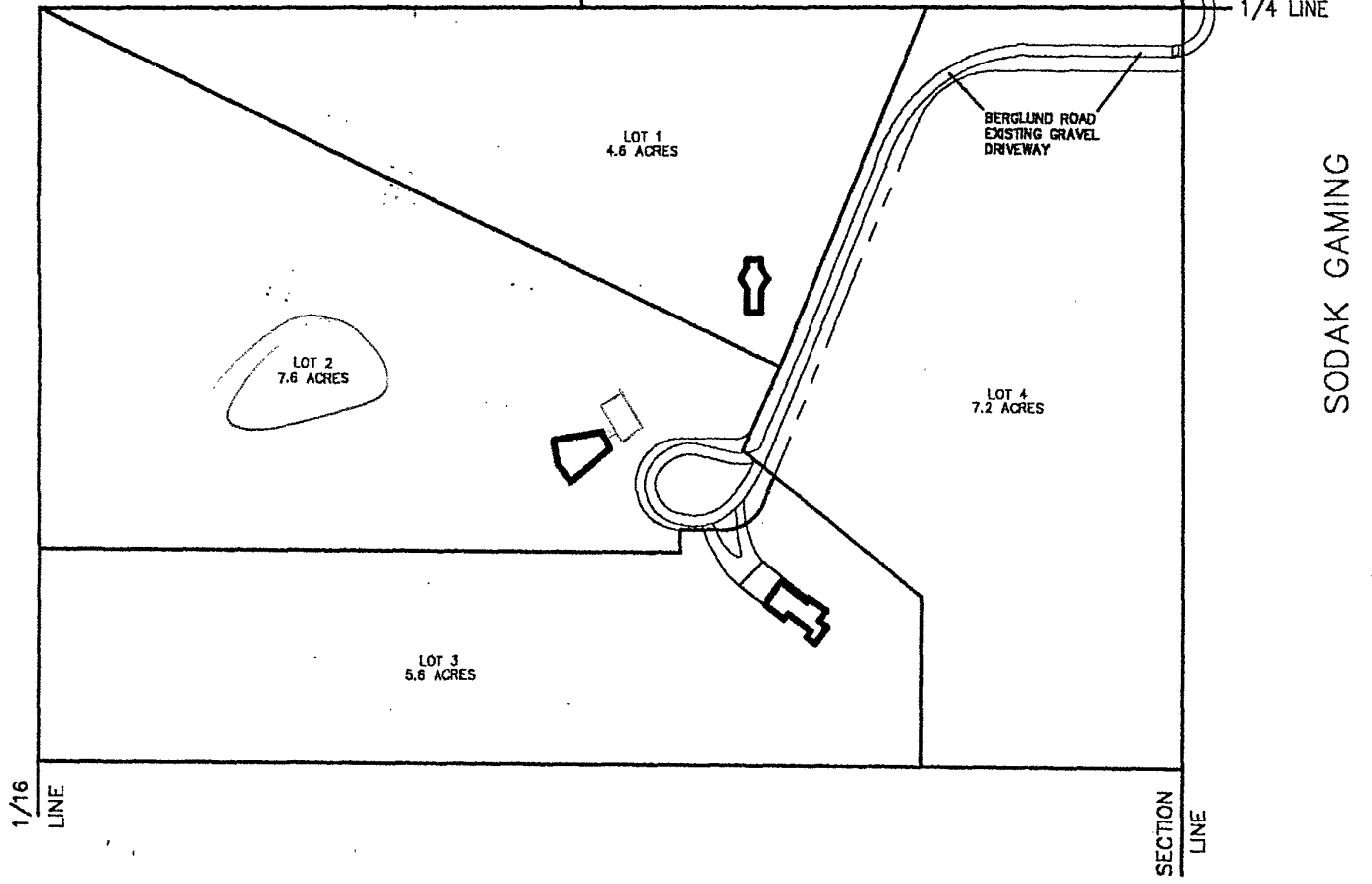


03PD031

1" = 60'



TRACT 1 KOVARIK SUBDIVISION



SEARCHED INDEXED
SERIALIZED FILED
APR 11 1967
FBI - RAPID CITY

W&E
WILSON & WILSON
ENGINEERS

LAYOUT PLAT OF LOTS 1-4 OF SQUIRRELLY ACRES
LOCATED IN NE 1/4 SE 1/4 OF SECTION 22 T1N, R7E, BEM
RAPID CITY, PENNINGTON COUNTY, SOUTH DAKOTA