

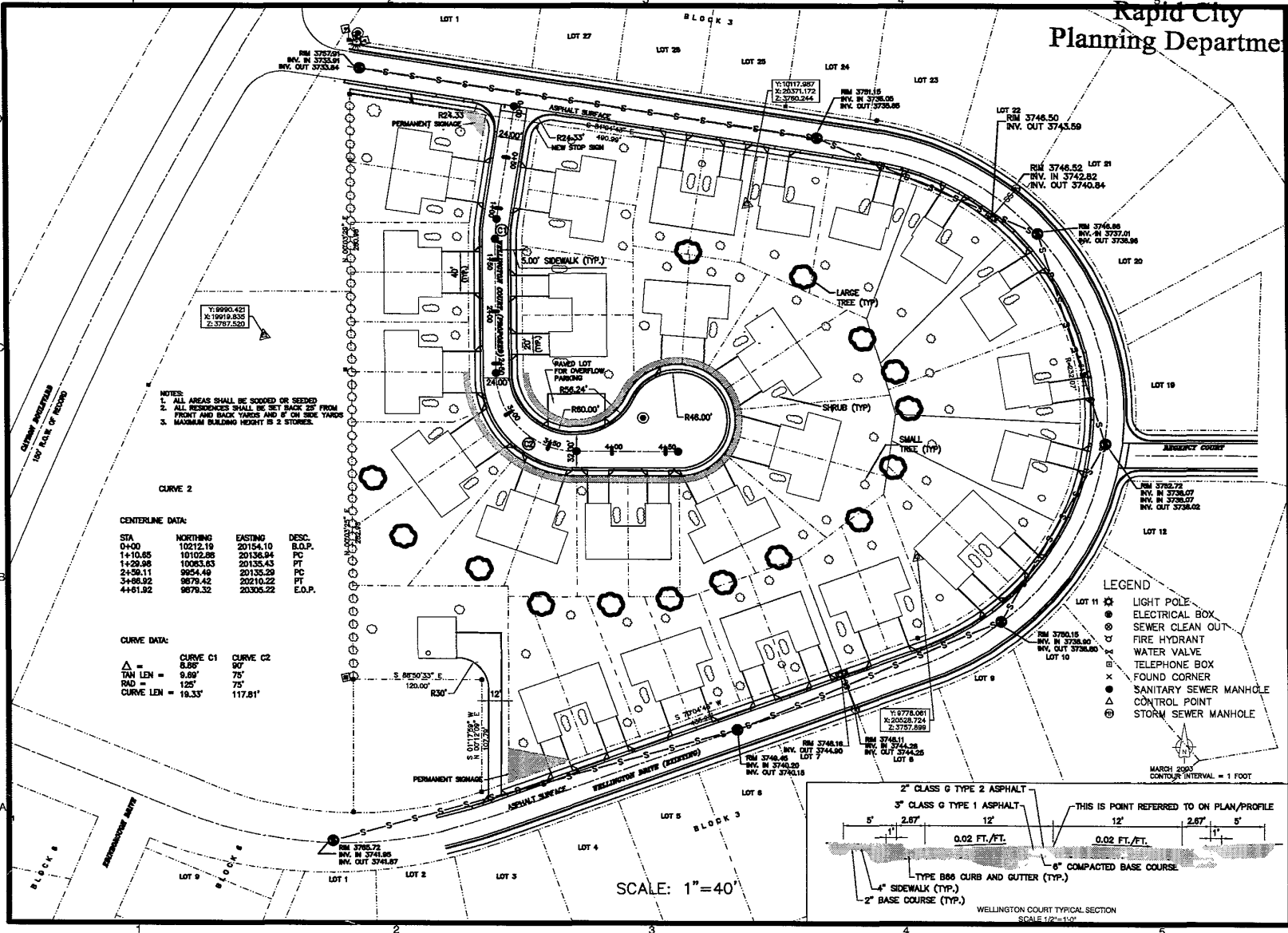
JUN 23 2003

Rapid City Planning Department



To Solve. To Excel. Together.
TSP, Inc.
600 Kansas City Street
Rapid City, SD 57701
phone: (605) 343-6102
fax: (605) 343-7158
www.tspinc.com

Architecture
Engineering
Construction



- NOTES:
1. ALL AREAS SHALL BE SCOOPED OR SEEDED
 2. ALL RESIDENCES SHALL BE SET BACK 20' FROM FRONT AND BACK YARDS AND 5' ON SIDE YARDS
 3. MAXIMUM BUILDING HEIGHT IS 2 STORES.

CURVE 2

CENTERLINE DATA:

STA	NORTHING	EASTING	DESC.
0+00	10212.19	20154.10	B.O.P.
1+10.05	10102.28	20136.94	PC
1+29.98	10053.63	20135.43	PT
2+50.11	9954.49	20133.29	PC
3+86.32	9879.42	20210.22	PT
4+61.92	9876.32	20306.22	E.O.P.

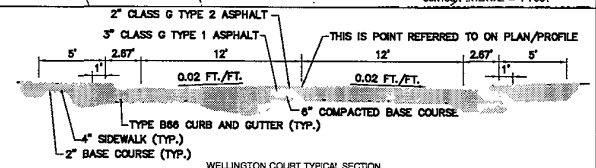
CURVE DATA:

	CURVE C1	CURVE C2
Δ	6.86°	97°
TAN LEN =	9.69'	75'
RAD =	125'	75'
CURVE LEN =	19.33'	117.81'

LEGEND

- LOT 11 LIGHT POLE
- ⊙ ELECTRICAL BOX
- ⊙ SEWER CLEAN OUT
- ⊙ FIRE HYDRANT
- ⊙ WATER VALVE
- ⊙ TELEPHONE BOX
- ⊙ FOUND CORNER
- ⊙ SANITARY SEWER MANHOLE
- ⊙ CONTROL POINT
- ⊙ STORM SEWER MANHOLE

MARCH 2003
CONTOUR INTERVAL = 1 FOOT



SCALE: 1"=40'

PROJECT DETAILS

PROJECT NO. 030071
PROJECT TITLE
DATE 6-18-03
DRAWN BY
CHECK BY
DATE

PROJECT TITLE

Wellington Heights
Subdivision
Rapid City, SD



Wellington Heights
Subdivision
Rapid City, SD

MARK	DATE	DESCRIPTION

PROJECT NUMBER 030071
CADD FILE 0-18-03
DRAWN BY
CHECK BY
DATE

SITE TITLE

SITE LAYOUT AND
LANDSCAPE PLAN

C-101

PRELIMINARY NOT FOR CONSTRUCTION