

Rapid City
Planning Department

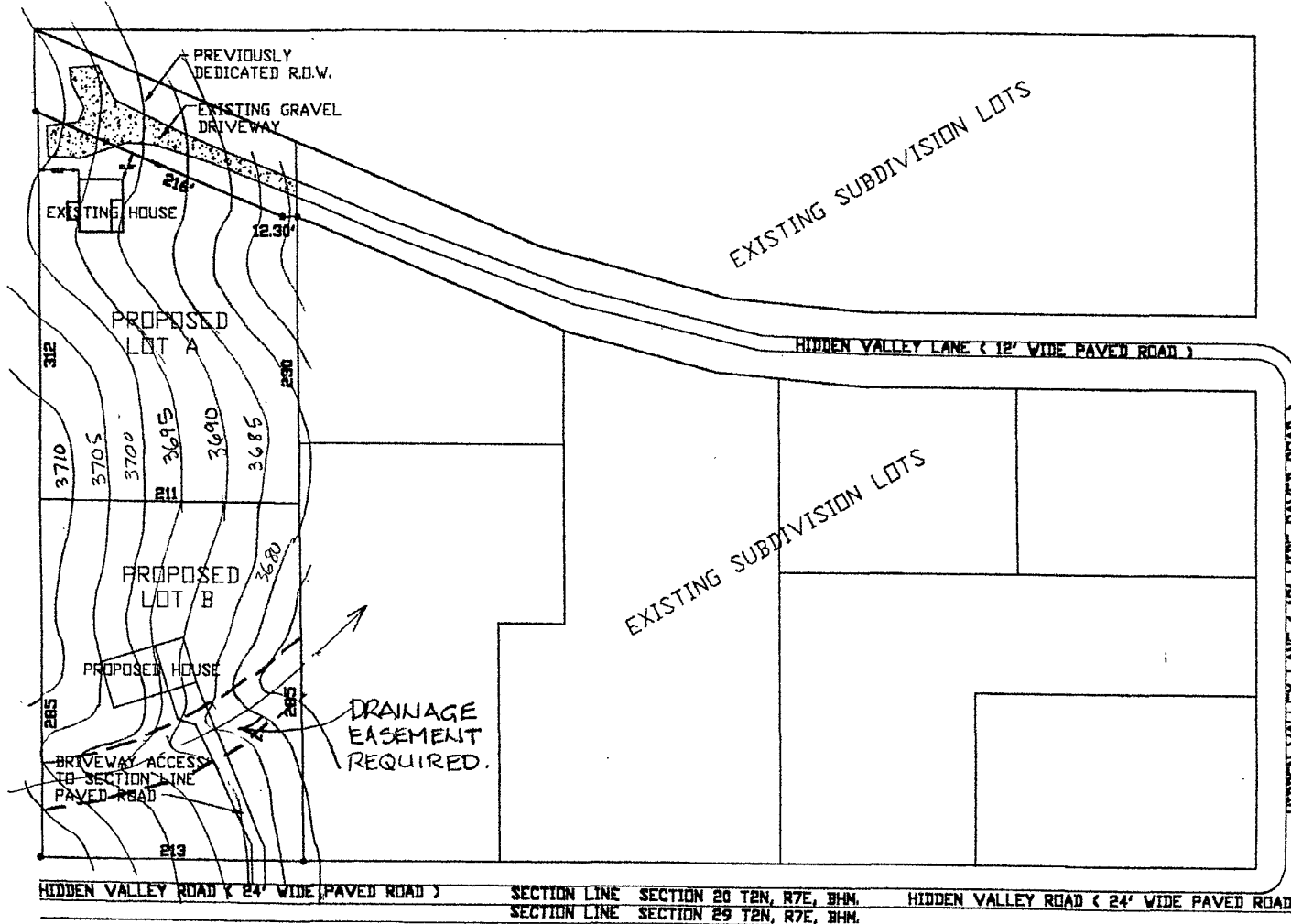
MAR 31 2003

RECEIVED

PROPOSED LAYOUT PLAT OF
LOT A AND LOT B OF BOURNE ADDITION



DATE: MARCH 28, 2003
NOT TO SCALE



EXISTING SUBDIVISION LOTS

EXISTING SUBDIVISION LOTS

EXHIBIT A

PREPARED BY:
DAVIS ENGINEERING, INC.
1060 KINGS ROAD
RAPID CITY, SD 57702
605-341-3095