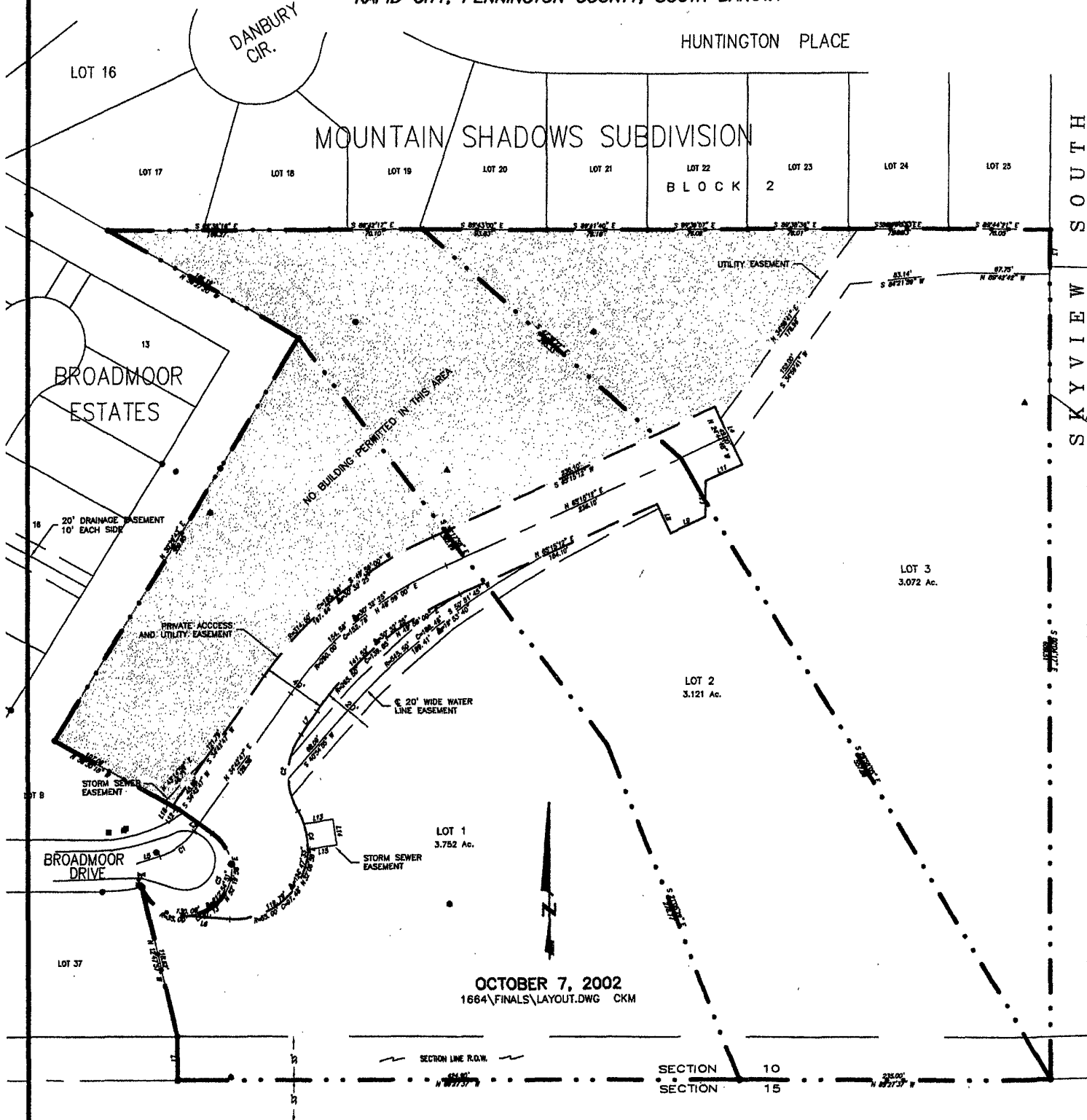


PRELIMINARY LAYOUT PLAT

LOTS 1, 2, & 3 OF BLOCK 1 OF SUNSET HEIGHTS SUBDIVISION  
LOCATED IN THE SW<sup>1</sup>/<sub>4</sub> OF THE SE<sup>1</sup>/<sub>4</sub> OF SECTION 10, T1N, R7E, BHM  
RAPID CITY, PENNINGTON COUNTY, SOUTH DAKOTA



OCTOBER 7, 2002  
1664\FINALS\LAYOUT.DWG CKM

SECTION LINE R.O.W.      SECTION 10  
SECTION 15