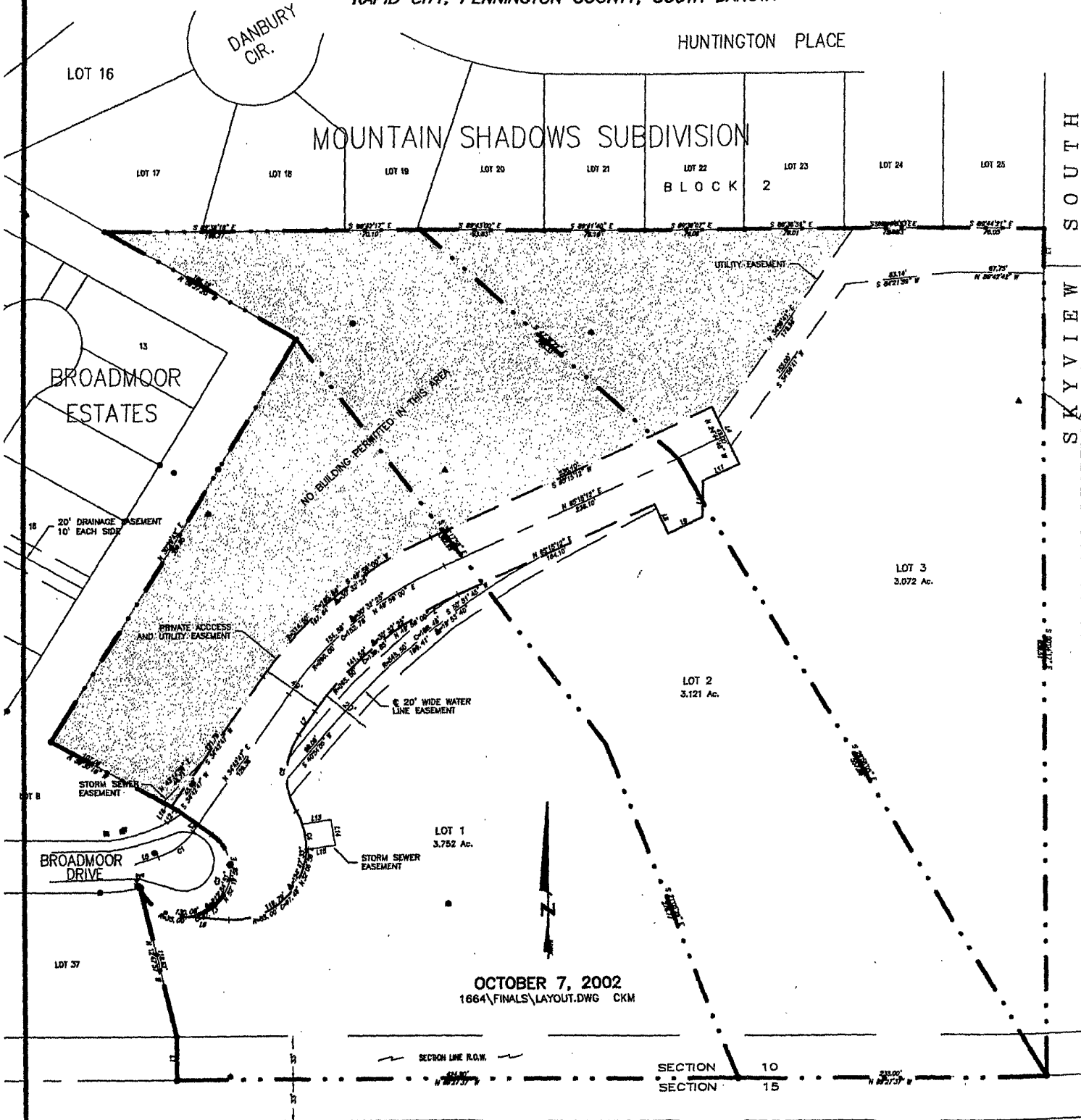


PRELIMINARY LAYOUT PLAT

LOTS 1, 2, & 3 OF BLOCK 1 OF SUNSET HEIGHTS SUBDIVISION  
LOCATED IN THE SW 1/4 OF THE SE 1/4 OF SECTION 10, T1N, R7E, BHM

RAPID CITY, PENNINGTON COUNTY, SOUTH DAKOTA



OCTOBER 7, 2002  
1664\FINALS\LAYOUT.DWG CKM