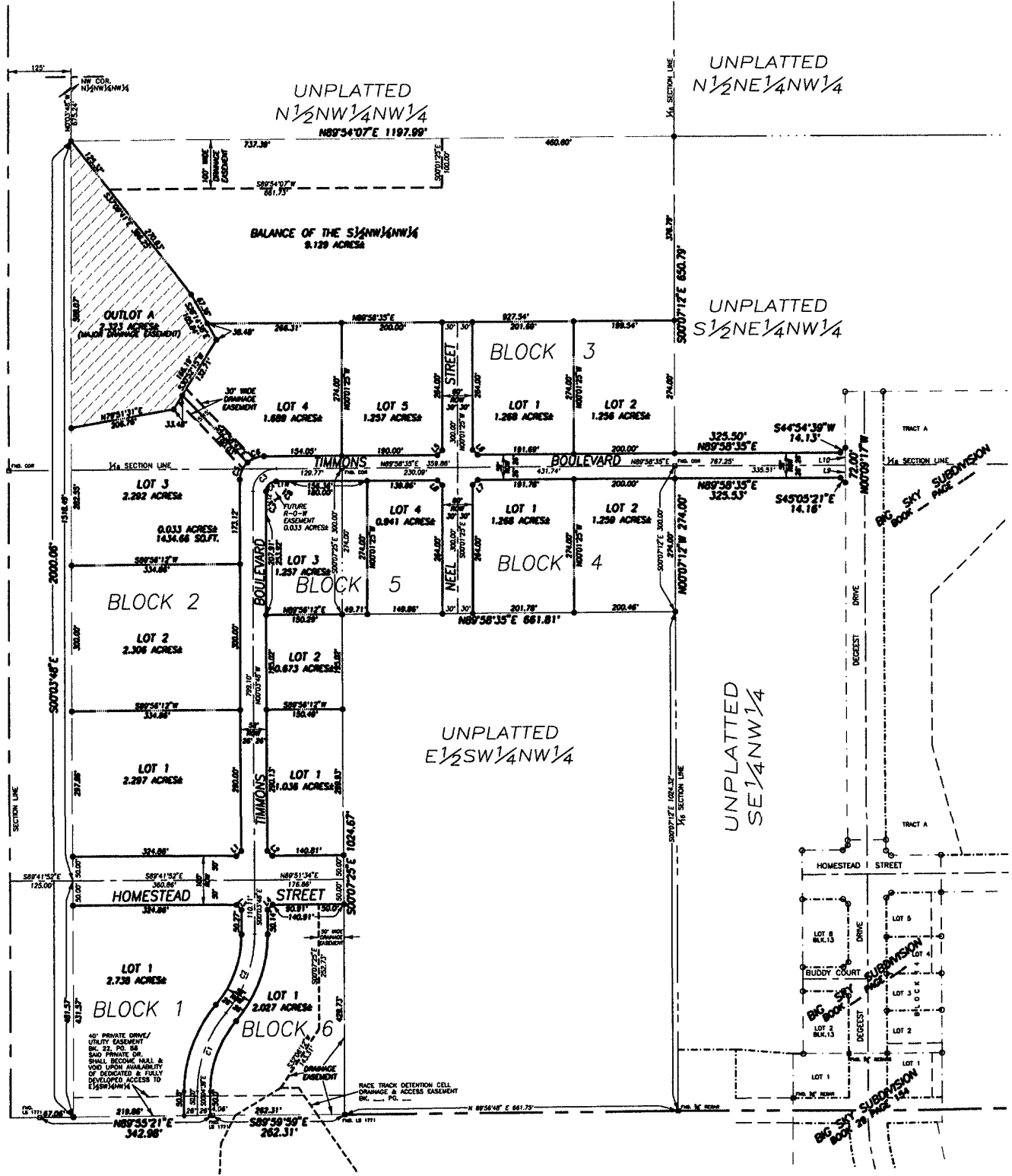


BIG SKY BUSINESS PARK

LOT 1, BLOCK 1; LOTS 1 THRU 5, BLOCK 2; LOTS 1 & 2, BLOCK 3;
 LOTS 1 & 2, BLOCK 4; LOTS 1 THRU 4, BLOCK 5; LOT 1, BLOCK 6 AND DEDICATED STREETS
 LOCATED IN THE SW $\frac{1}{4}$ SW $\frac{1}{4}$ AND THE S $\frac{1}{2}$ NW $\frac{1}{4}$ NW $\frac{1}{4}$ OF SECTION 3, T1N, R8E, B.H.M.,
 PENNINGTON COUNTY, SOUTH DAKOTA



\\B:\c\DDI-PROJECTS\BigSky-BUSINESSPARK-PLAT.dwg, 12/13/02 11:26:00 AM, HP C LaserJet 4500-HP, 1:1