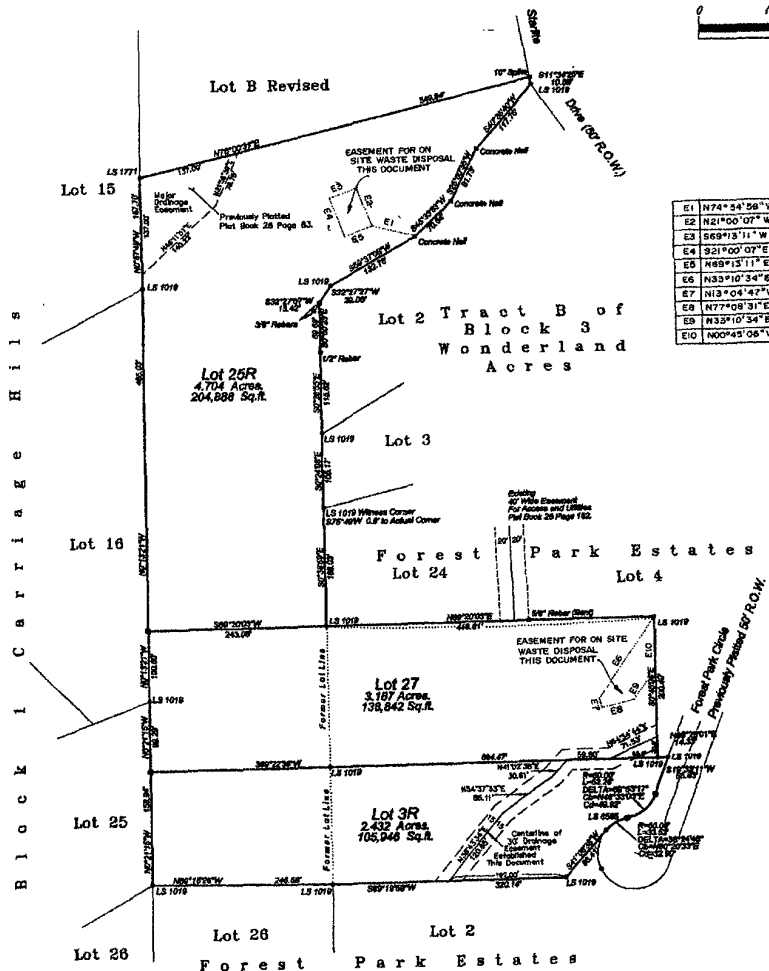


# Plat of Lots 3R, 25R and 27 of Forest Park Estates Subdivision

Formerly all of Lot 3 and Lot 25 of Forest Park Estates Subdivision and the North 200' of the South 940' of the West 450' of Tract A, all in Section 16, T1N, R7E, BHM, Rapid City, Pennington County, South Dakota.  
(Sheet 1 of 2)

Prepared By:  
Flak Land Surveying and  
Consulting Engineers, Inc.  
P.O. Box 8154  
Rapid City, South Dakota 57709  
Ph# 605-349-1539  
F# 341-1112  
e-mail flak@rapidnet.com  
Project # 97-10-01

03SV007



E1	N74°24'28\"	55.89'
E2	N21°00'07\"	58.00'
E3	S69°31'11\"	40.00'
E4	S21°00'07\"	58.00'
E5	N89°15'11\"	40.00'
E6	N33°10'34\"	134.91'
E7	N13°04'47\"	13.00'
E8	N77°09'31\"	48.75'
E9	N33°10'34\"	54.33'
E10	N00°45'08\"	72.59'

**NOTES**

Basis of Bearings is Solar Observation  
UTILITY AND MINOR DRAINAGE EASEMENTS  
8' ON THE INTERIOR SIDE OF ALL LOT LINES  
SEE PREVIOUS PLATS OF FOREST PARK ESTATES,  
SUBDIVISION FOR RECORDED MEASUREMENTS.  
Plat Book 26 Page 152 and Book 28 Page 53  
All major drainage easement shown herein shall be  
kept free of all obstructions including but not limited to  
buildings, walls, fences, hedges, trees and shrubs.  
These easements grant to all public authorities the  
right to construct, operate, maintain, inspect and repair  
such improvements and structures as it deems expedient  
to facilitate drainage from any source.