

# PLAT OF RED ROCK ESTATES

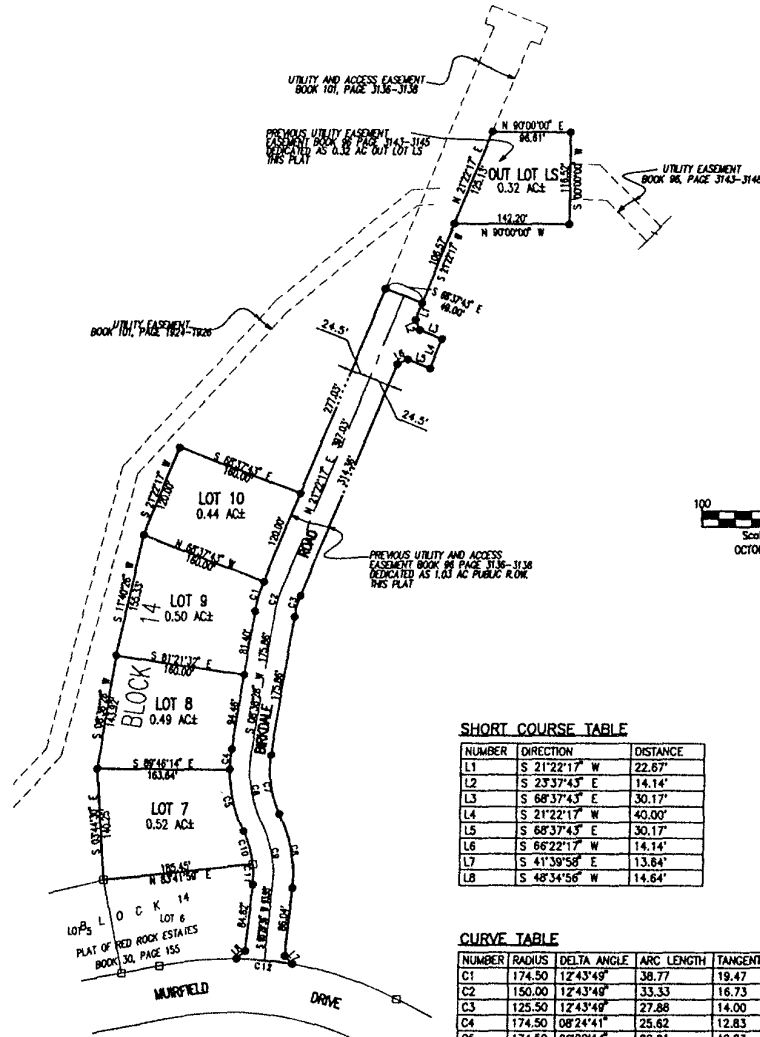
INCLUDING LOTS 7 THRU 10, BLOCK 14 AND  
OUTLOT LS AND DEDICATED STREETS

THE UNPLATTED PORTION OF NW1/4  
SECTION 29, T1N, R7E, BHM  
RAPID CITY, PENNINGTON COUNTY, SOUTH DAKOTA

02PL114

### LEGEND

- DENOTES SET 5/8" REBAR WITH SURVEY CAP MARKED "R.S. 3977"
  - DENOTES FOUND SURVEY MONUMENT
- BASIS OF BEARING: PER PREVIOUSLY RECORDED PLAT(S).



### SHORT COURSE TABLE

NUMBER	DIRECTION	DISTANCE
L1	S 21°22'17" W	22.67'
L2	S 23°37'43" E	14.14'
L3	S 68°37'43" E	30.17'
L4	S 21°22'17" W	40.00'
L5	S 68°37'43" E	30.17'
L6	S 68°22'17" W	14.14'
L7	S 41°39'58" E	13.84'
L8	S 48°34'56" W	14.64'

### CURVE TABLE

NUMBER	RADIUS	DELTA ANGLE	ARC LENGTH	TANGENT	CHORD DIRECTION	CHORD LENGTH
C1	174.50	12°43'49"	38.77	19.47	S 15°00'22" W	38.69
C2	150.00	12°43'49"	33.33	16.73	S 15°00'22" W	33.26
C3	125.50	12°43'49"	27.88	14.00	S 15°00'22" W	27.83
C4	174.50	08°24'41"	25.62	12.83	N 04°28'07" E	25.59
C5	174.50	26°20'14"	80.21	40.83	S 12°58'21" E	79.51
C6	150.00	34°44'55"	90.97	46.93	S 08°44'00" E	89.58
C7	125.50	34°44'55"	76.11	39.27	S 08°44'00" E	74.95
C8	174.50	31°36'04"	96.24	49.38	S 10°18'26" E	95.03
C9	150.00	31°36'04"	82.73	42.45	S 10°18'26" E	81.69
C10	125.50	19°48'27"	43.39	21.91	N 18°12'14" W	43.17
C11	125.50	11°47'37"	25.83	12.98	S 00°24'12" E	25.79
C12	438.00	17°51'29"	136.52	68.82	S 71°03'36" E	135.96

### NOTES:

1. MINOR DRAINAGE AND UTILITY EASEMENTS ARE HEREBY ESTABLISHED 8' WIDE ON THE INTERIOR SIDE OF ALL LOT LINES AND EXTERIOR OF RIGHT-OF-WAY. (EXCEPT WHERE MAJOR DRAINAGE EASEMENTS ARE LOCATED)
2. TOTAL PLATTED AREA: 3.29 ACRES; LOTS: 1.94 ACRES. OUTLOT LS 0.32 ACRES PUBLIC RIGHT-OF-WAY: 1.03 ACRES DEDICATED FOR PUBLIC USE BY THIS PLAT.
3. NON-ACCESS EASEMENTS ARE HEREBY ESTABLISHED ALONG THE FIRST FIFTY FEET OF CORNER LOTS OR AS INDICATED HEREON.
4. ALL BUILDERS SHALL MAINTAIN EXISTING DRAINAGE FACILITIES IN ACCORDANCE TO APPROVED CONSTRUCTION PLANS. (RAPID CITY ENR. DIV. REQUESTED NOTE)