

FND CAP "4208"  
2.39' (C) WEST OF  
SECTION LINE

0.9711 ACRES      0.7308 ACRES      0.9398 ACRES      1.0335 ACRES

UTILITY EASEMENT  
SEE DETAIL B

S89°01'14"E

SEE DETAIL A

03SV006

LOT  
31

990.00'

SECTION LINE

787.88'

445.0' (R) 425.10' (M)

FND #5 REBAR  
2.62' WEST OF  
SECTION LINE

BASIS OF BEARINGS -  
RECORD BEARING ON EAST  
LINE OF ENCH. HILLS NO.3

FND. 1/4 COR.  
STONE MONUMENT

23 | 24

33' 33'

39 R  
2.6780 ACRES

38 R  
1.4354 ACRES

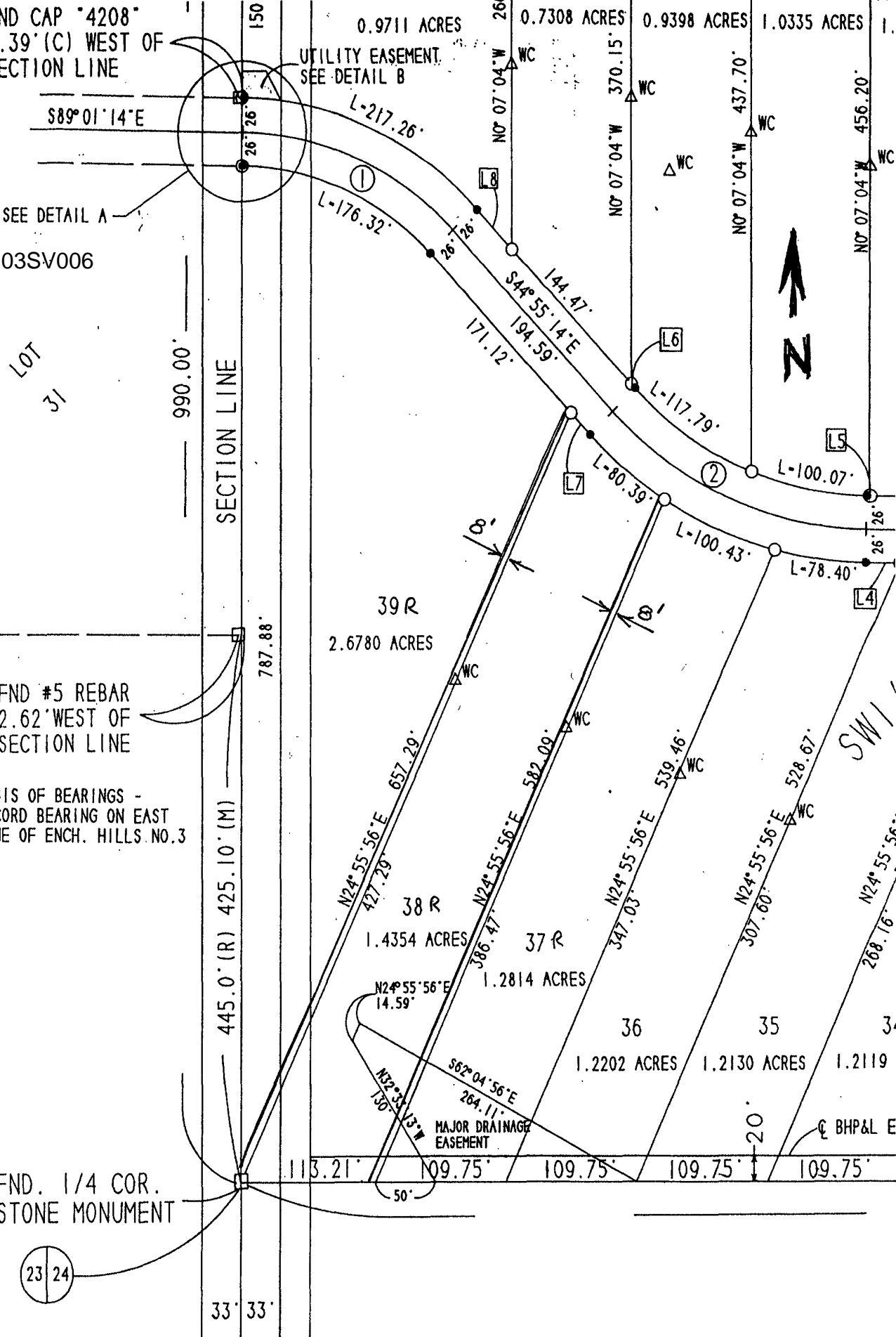
37 R  
1.2814 ACRES

36  
1.2202 ACRES

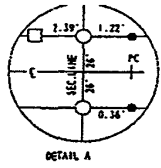
35  
1.2130 ACRES

34  
1.2119 ACRES

MAJOR DRAINAGE  
EASEMENT

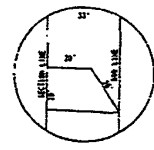


FND NW SEC. 24 COR. STONE MONUMENT  
**03SV006**



PLAT OF LOTS 1 THROUGH 39 ENCHANTED HILLS SUBDIVISION NO. 4  
 LOCATED IN THE S 1/2 NE 1/4 OF SEC. 24 - T1N - R7E BHM  
 RAPID CITY, PENNINGTON COUNTY, SD

Map on 74 page 414 Surveyor Affidavit to correct errors to read 32.444%



SCALE: 1" = 100'  
 MAY 1998

FND #5 REBAR  
 1.97' (C1) WEST OF  
 SECTION LINE

8HPAL TRANSMISSION  
 LINE EASEMENT

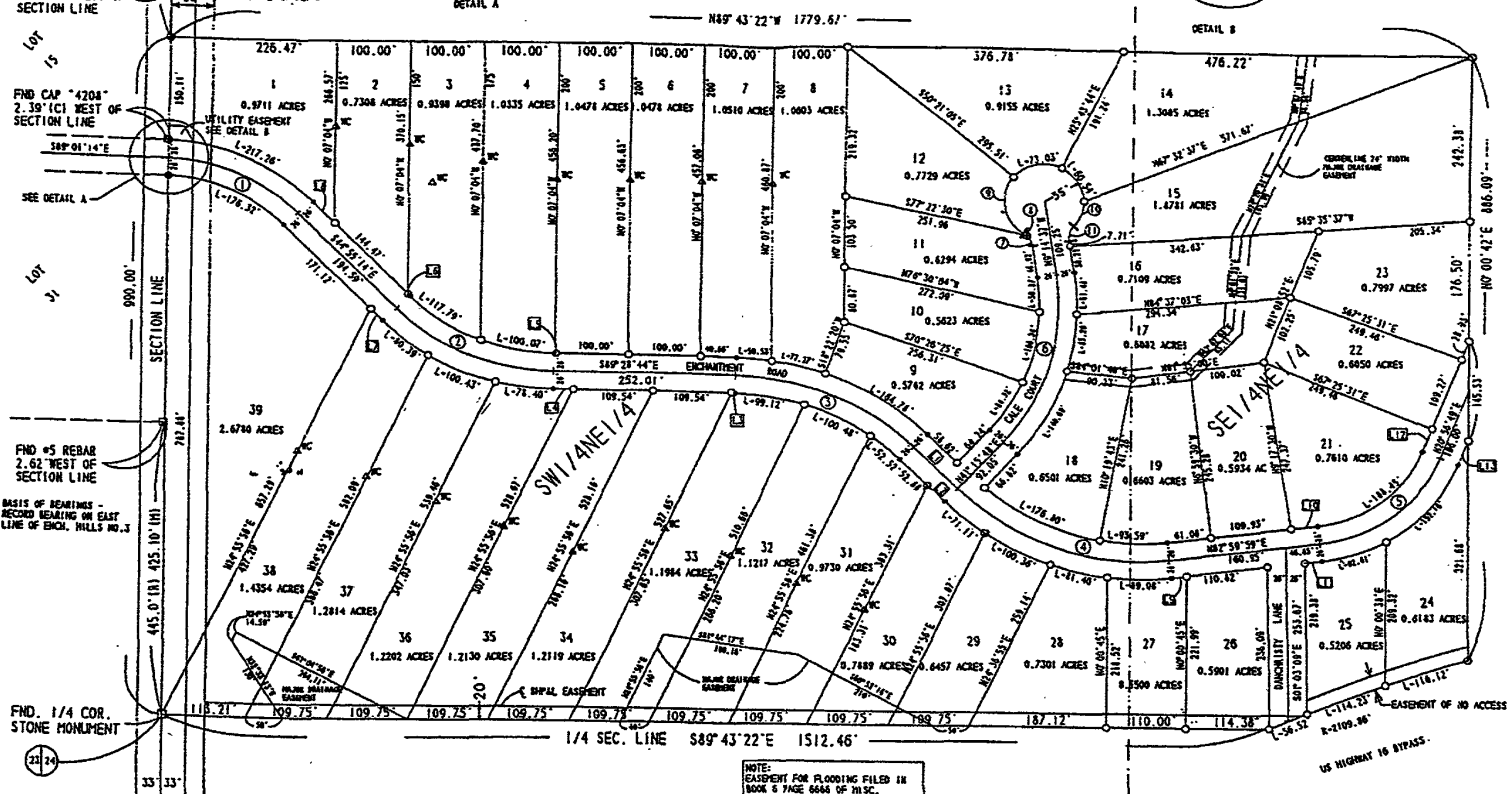
FND CAP "4204"  
 2.39' (C1) WEST OF  
 SECTION LINE

SEE DETAIL A

FND #5 REBAR  
 2.62' WEST OF  
 SECTION LINE

BASES OF BEARINGS -  
 RECORD BEARING ON EAST  
 LINE OF ENCH. HILLS NO. 3

FND. 1/4 COR.  
 STONE MONUMENT



NOTE:  
 EASEMENT FOR FLOODING FILED IN  
 BOOK 6 PAGE 6646 OF PLSC.  
 PENNINGTON CO. REGISTER OF DEEDS.